

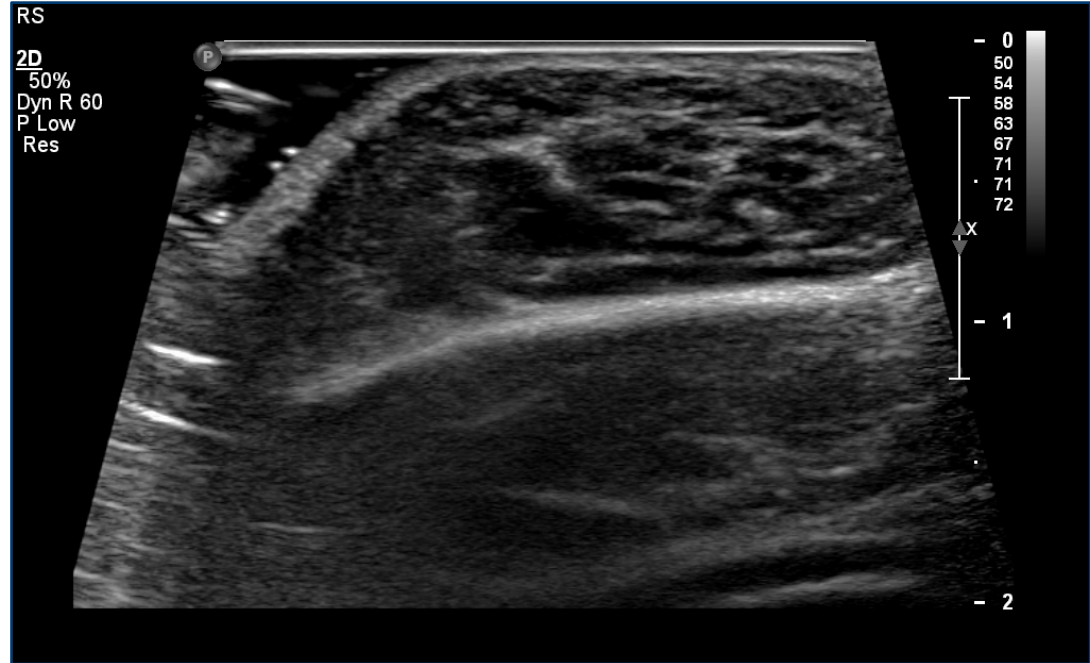
Case 1: a focal burden

- 7-year-old female presents to clinic to discuss a “hemangioma” present since birth
- The lesion fluctuates in size
 - swell when crying, angry, upside-down



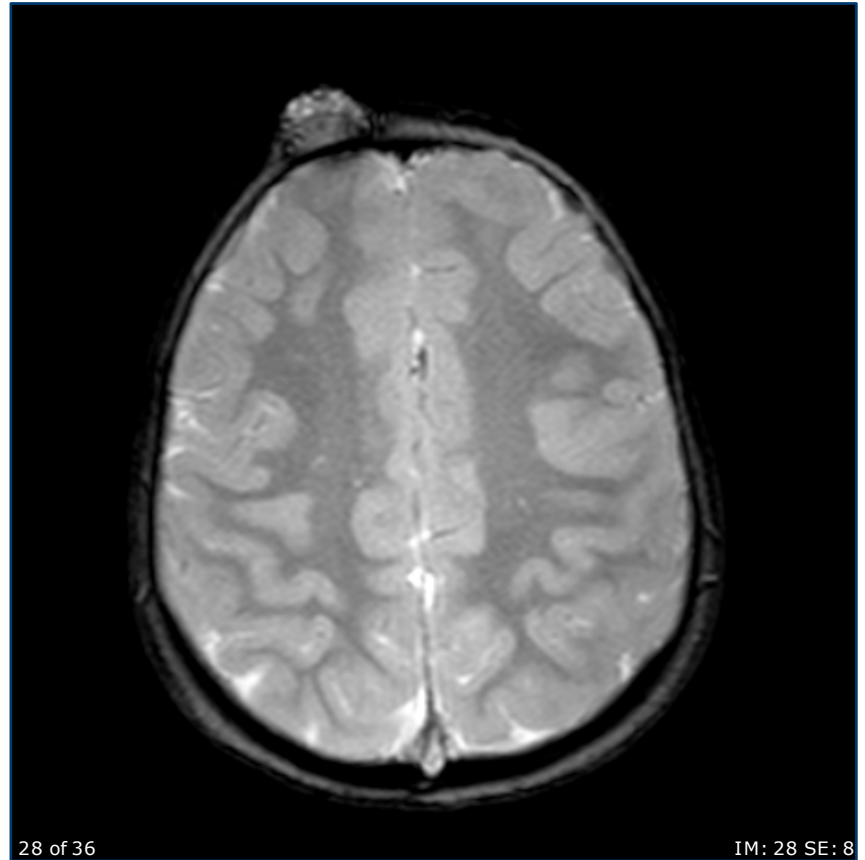
Case 1: a focal burden

- 7-year-old female presents to clinic to discuss a “hemangioma” present since birth
- The lesion fluctuates in size
 - swell when crying, angry, upside-down
- U/S: Hypoechoic compressible spaces, no- to slow-flow.



Case 1: a focal burden

- 7-year-old female presents to clinic to discuss a “hemangioma” present since birth
- The lesion fluctuates in size
 - swell when crying, angry, upside-down
- U/S: Hypoechoic compressible spaces, no- to slow-flow.
- MRI: Protuberant lesion involving the superficial tissues.

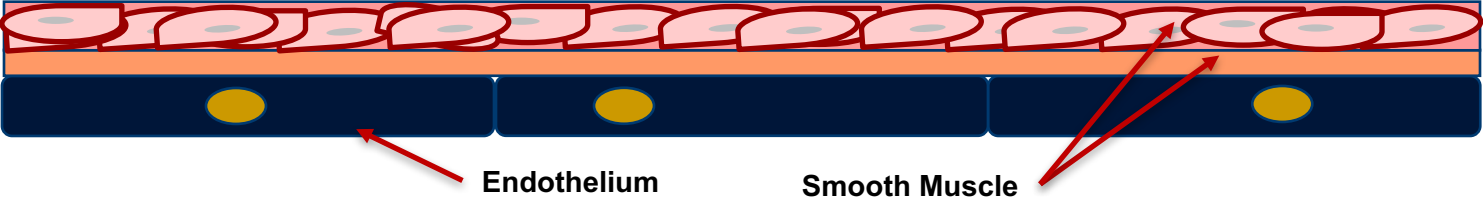


Case 1: a focal burden

- 7-year-old female presents to clinic to discuss a “hemangioma” present since birth
- The lesion fluctuates in size
 - swell when crying, angry, upside-down
- U/S: Hypoechoic compressible spaces, no- to slow-flow.
- MRI: Protuberant lesion involving the superficial tissues.

LAB EVALUATION	RESULTS	
D-dimer	0.24	Normal
PT	13	Normal
aPTT	27	Normal
Fibrinogen	340	Normal

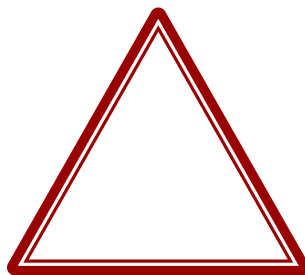
Normal Vein



Venous Malformation



**STASIS OF
BLOOD FLOW**



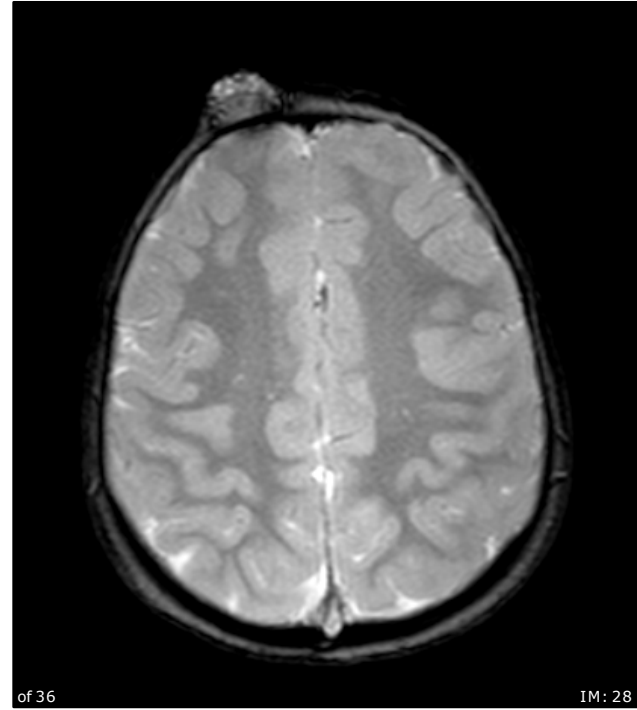
**ACTIVATED
ENDOTHELIUM**

**COSUMPTIVE
COAGULOPATHY**



What is the proper diagnosis?

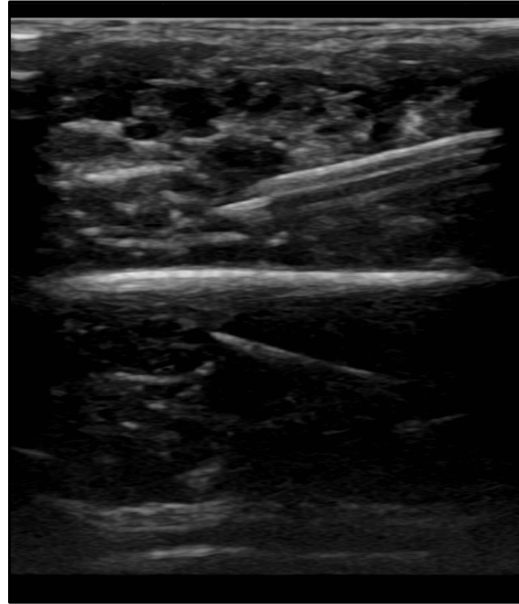
What are this child's therapeutic options?



Should this patient receive periprocedural anticoagulation?

Case 1: a focal burden

- 7-year-old female presents to clinic to discuss a “hemangioma” present since birth
- The lesion fluctuates in size
 - swell when crying, angry, upside-down
- U/S: Hypoechoic compressible spaces, no- to slow-flow.
- MRI: Protuberant lesion involving the superficial tissues.



Bleomycin Sclerotherapy