

# Case # 1

---

Andrea Bischoff

09/20/2018



Children's Hospital Colorado

INTERNATIONAL CENTER FOR  
**COLORECTAL AND  
UROGENITAL CARE**

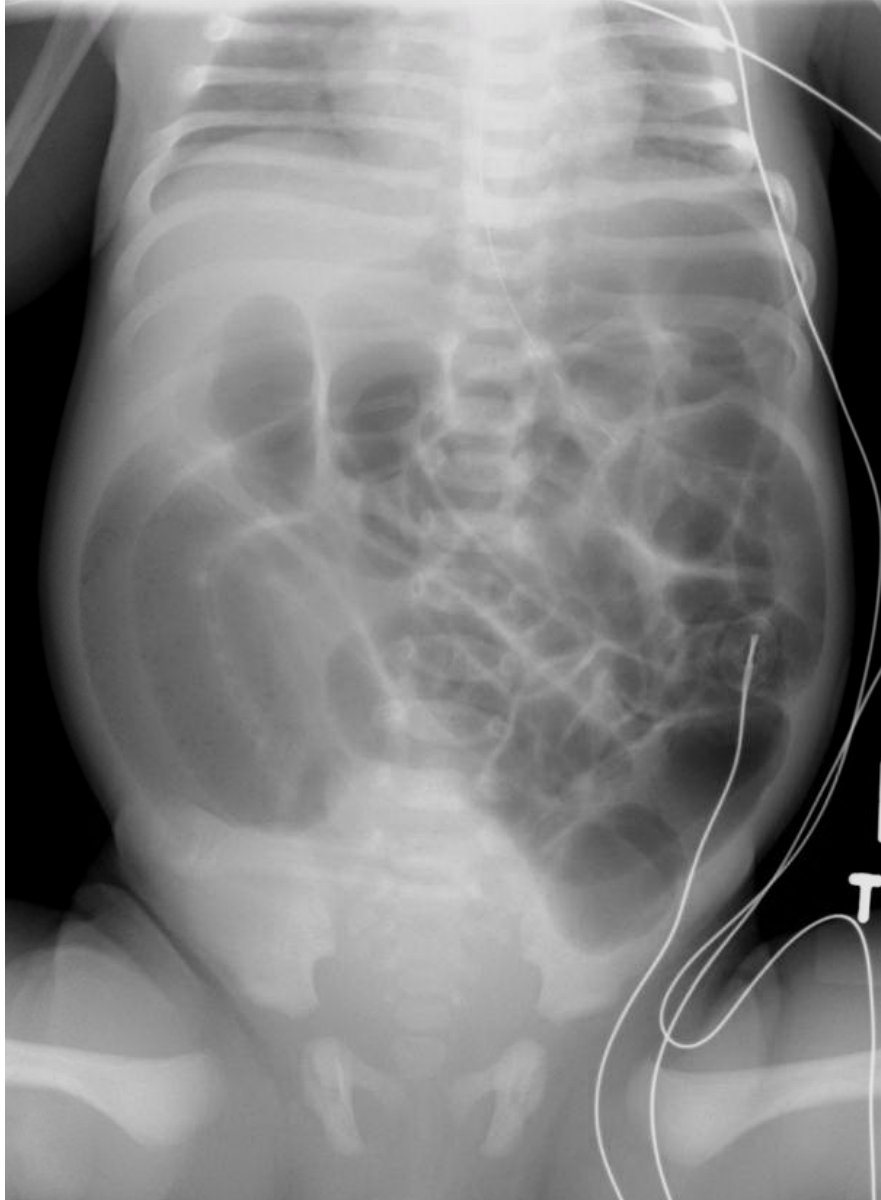


# Newborn with an Anorectal Malformation

# Which studies would you order during the first 24 hours of life?



1. Echocardiogram, Babygram, kidney ultrasound, sacral X-ray AP and lateral, spinal ultrasound, and pelvic ultrasound (if female with single perineal orifice)
2. Echocardiogram, spine and pelvis MRI, kidney ultrasound
3. Prone cross table lateral film, kidney ultrasound
4. I don't know

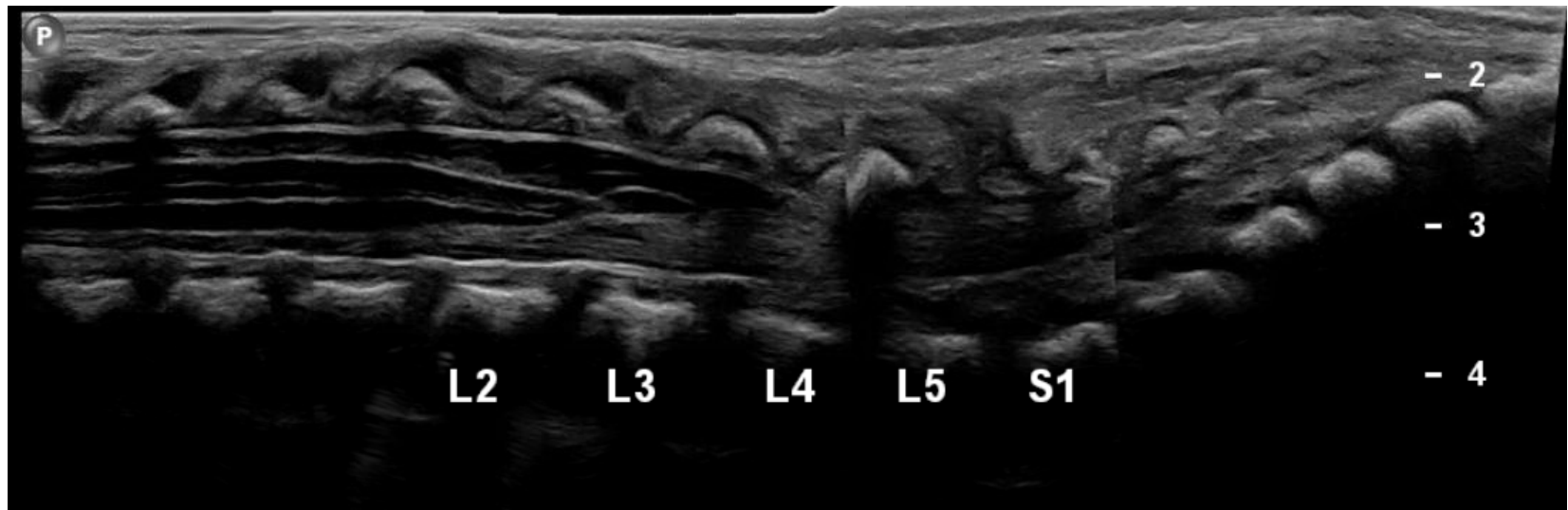








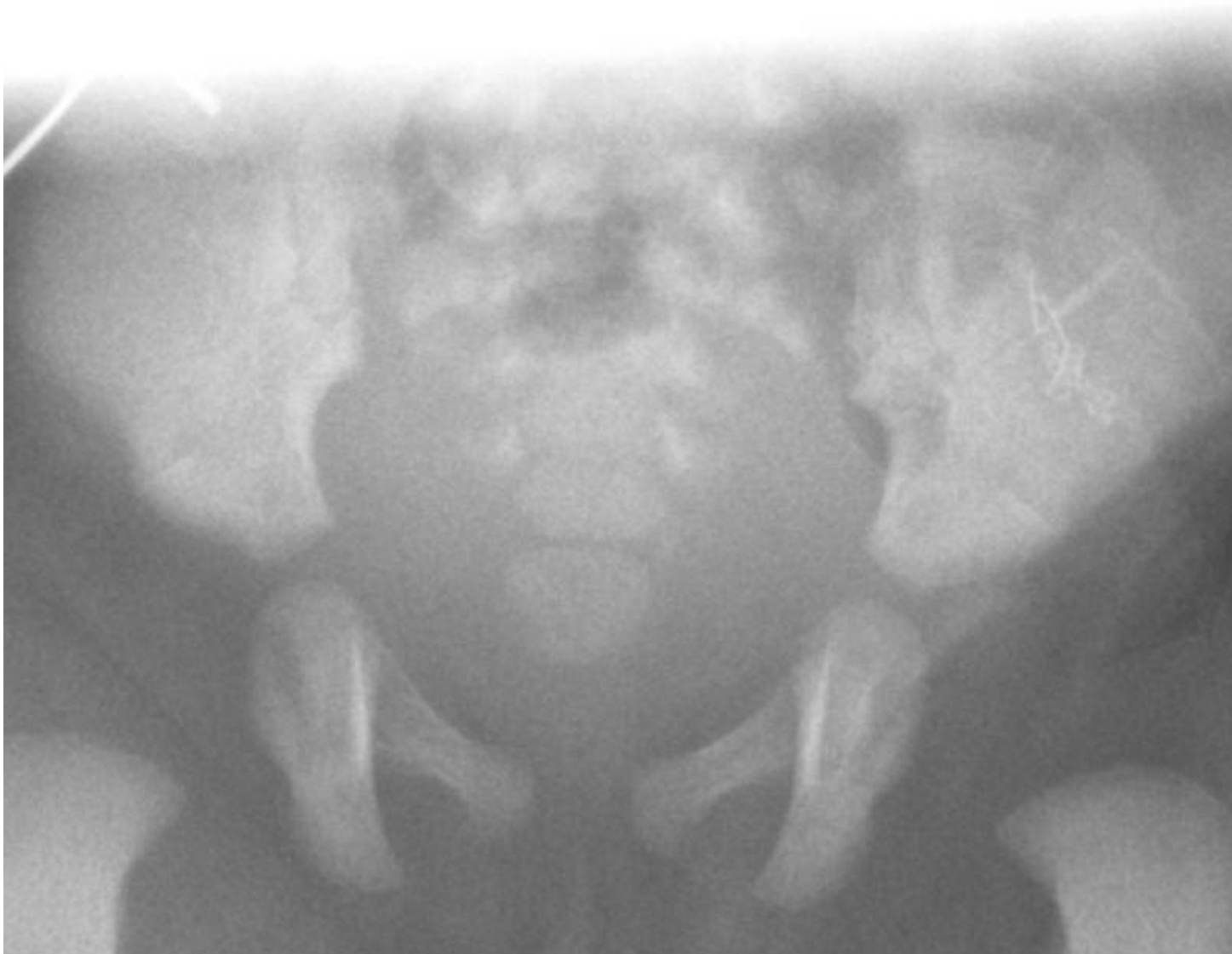
# Tethered cord





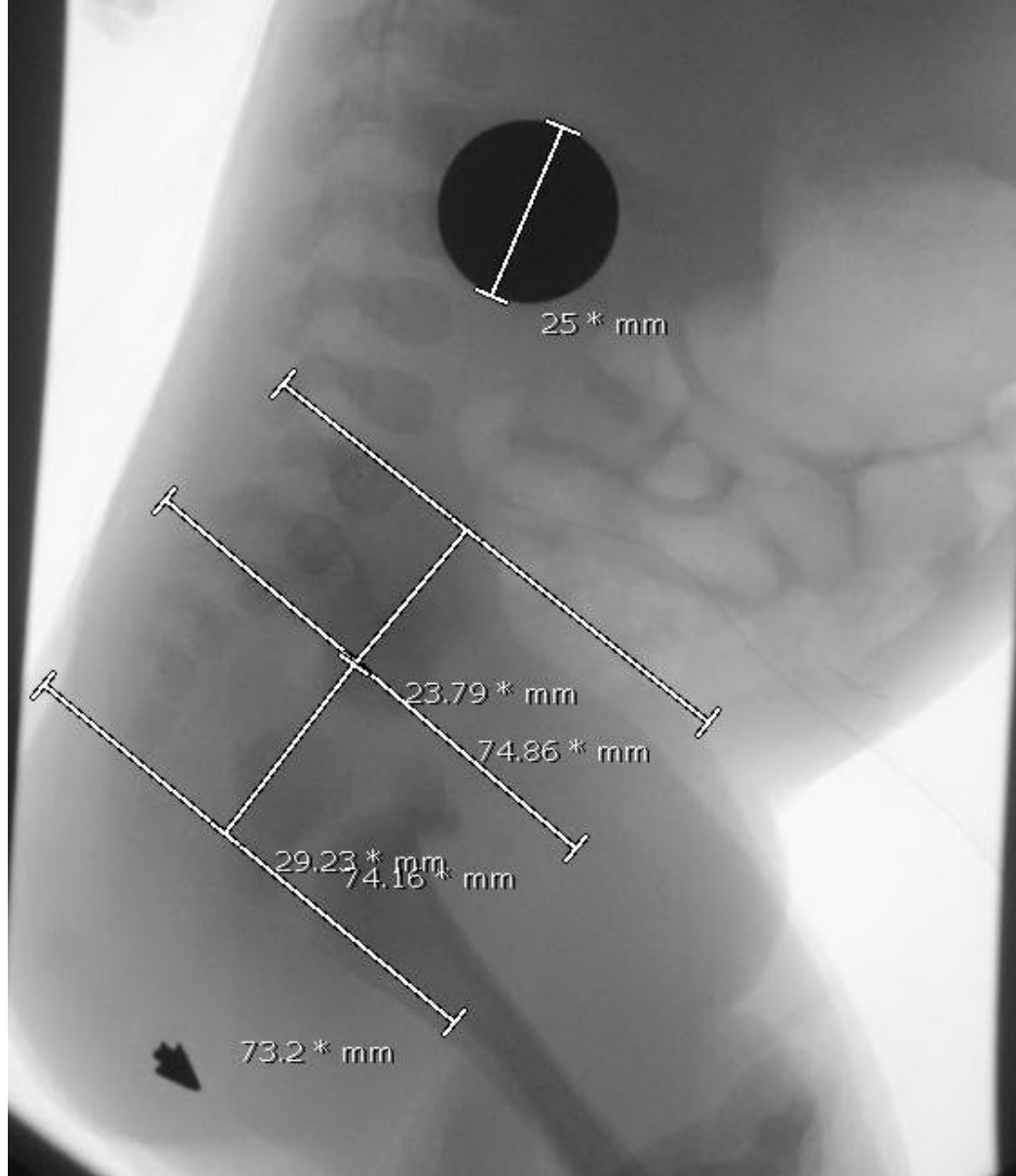
INTERNATIONAL CENTER FOR  
**COLORECTAL AND  
UROGENITAL CARE**





INTERNATIONAL CENTER FOR  
**COLORECTAL AND  
UROGENITAL CARE**











INTERNATIONAL CENTER FOR  
**COLORECTAL AND  
UROGENITAL CARE**

# How would you approach this patient?



1. Laparoscopy first
2. Laparotomy first
3. Posterior sagittal approach first
4. I don't know



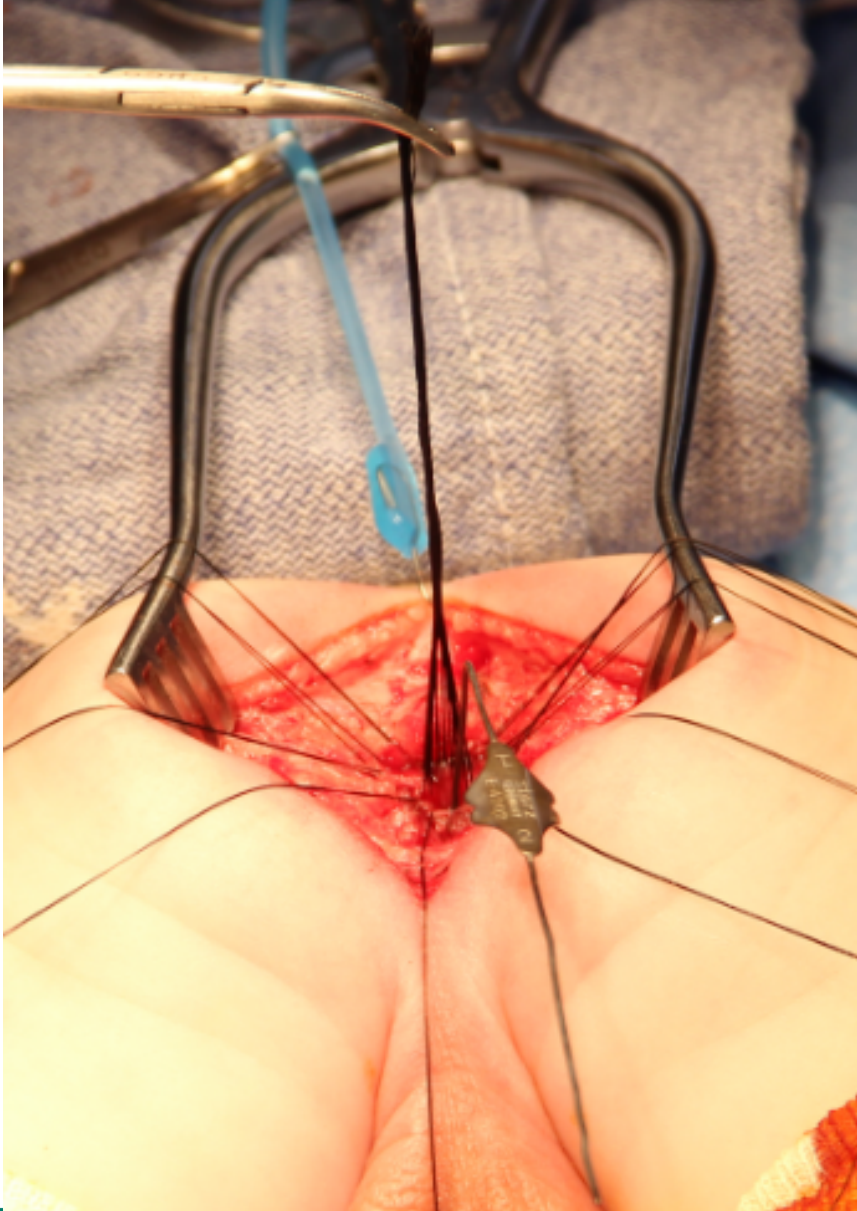


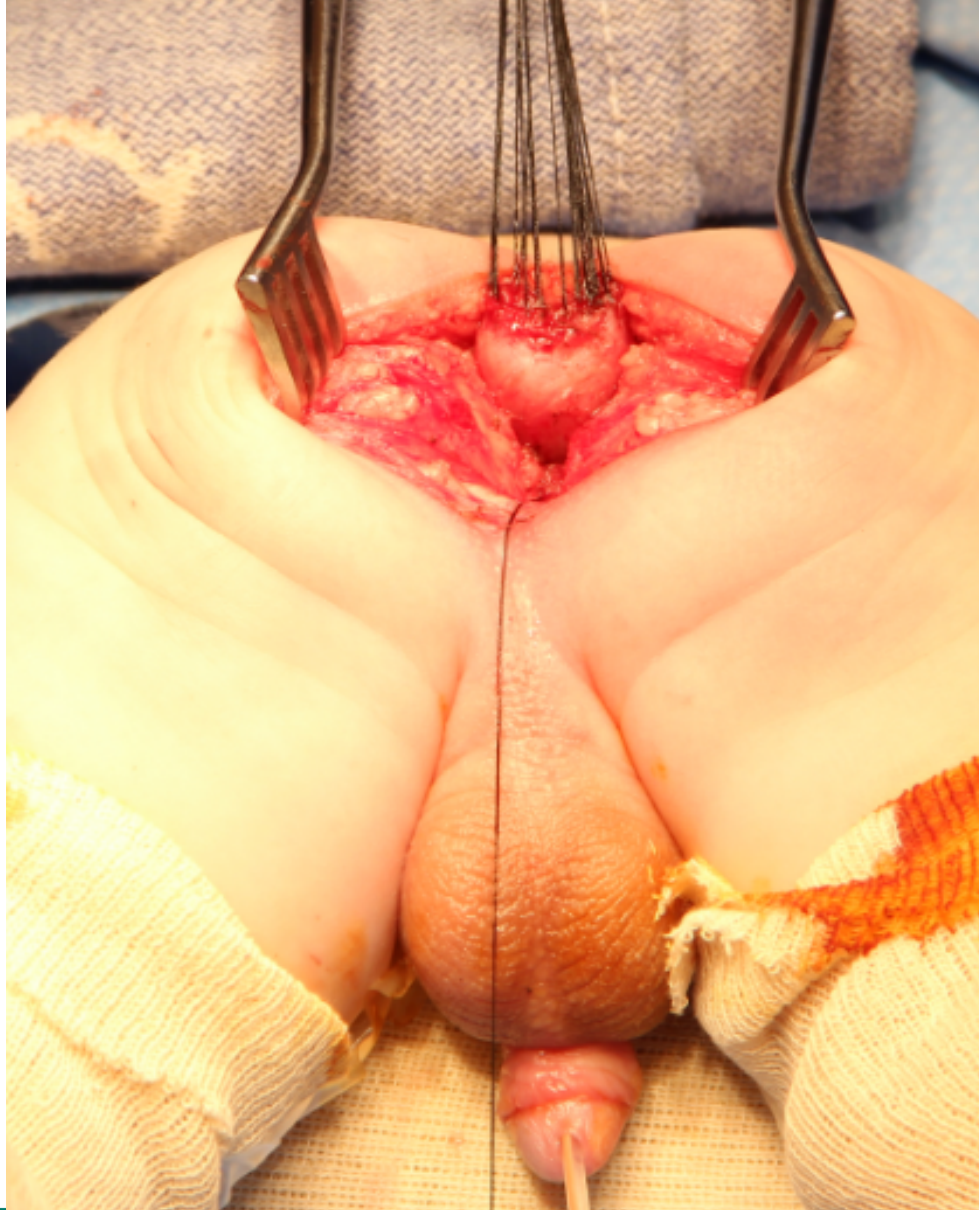


INTERNATIONAL CENTER FOR  
**COLORECTAL AND  
UROGENITAL CARE**





















What is the prognosis for bowel control in patients with recto-prostatic fistula? 

1. 25%
2. 45%
3. 65%
4. 85%
5. I don't know