



- 8 yo female patient born with T6 – L1 syrinx, neurogenic bladder and bowel (leaking urine and stool).
- GJ fed

# With this history, what would you do for the gastrointestinal tract?



1. Contrast enema and bowel management with enemas
2. Contrast enema and bowel management with laxatives
3. ACE procedure
4. Colostomy
5. I don't know



IONAL CENTER FOR  
**ECTAL AND**  
**ITAL CARE**



OR  
C

Post-Evac

IONAL CENTER FOR  
**RECTAL AND  
HITAL CARE**



- Underwent bowel management with enemas and was successfully clean with 400 ml of normal saline + 30 ml of glycerin + 9 ml of castile soap.
- Patient was also evaluated by urology.

# What would you do next?



1. Offer an ACE procedure
2. Wait for urology recommendation to decide if the patient will also need a Mitrofanoff
3. Offer laxative trial, and if she fails, offer an ACE procedure
4. I don't know



- Urology recommended to continue with medical management (leaking urine only at night)
- We offered laxative trial, immediately followed by Malone procedure, if she failed.

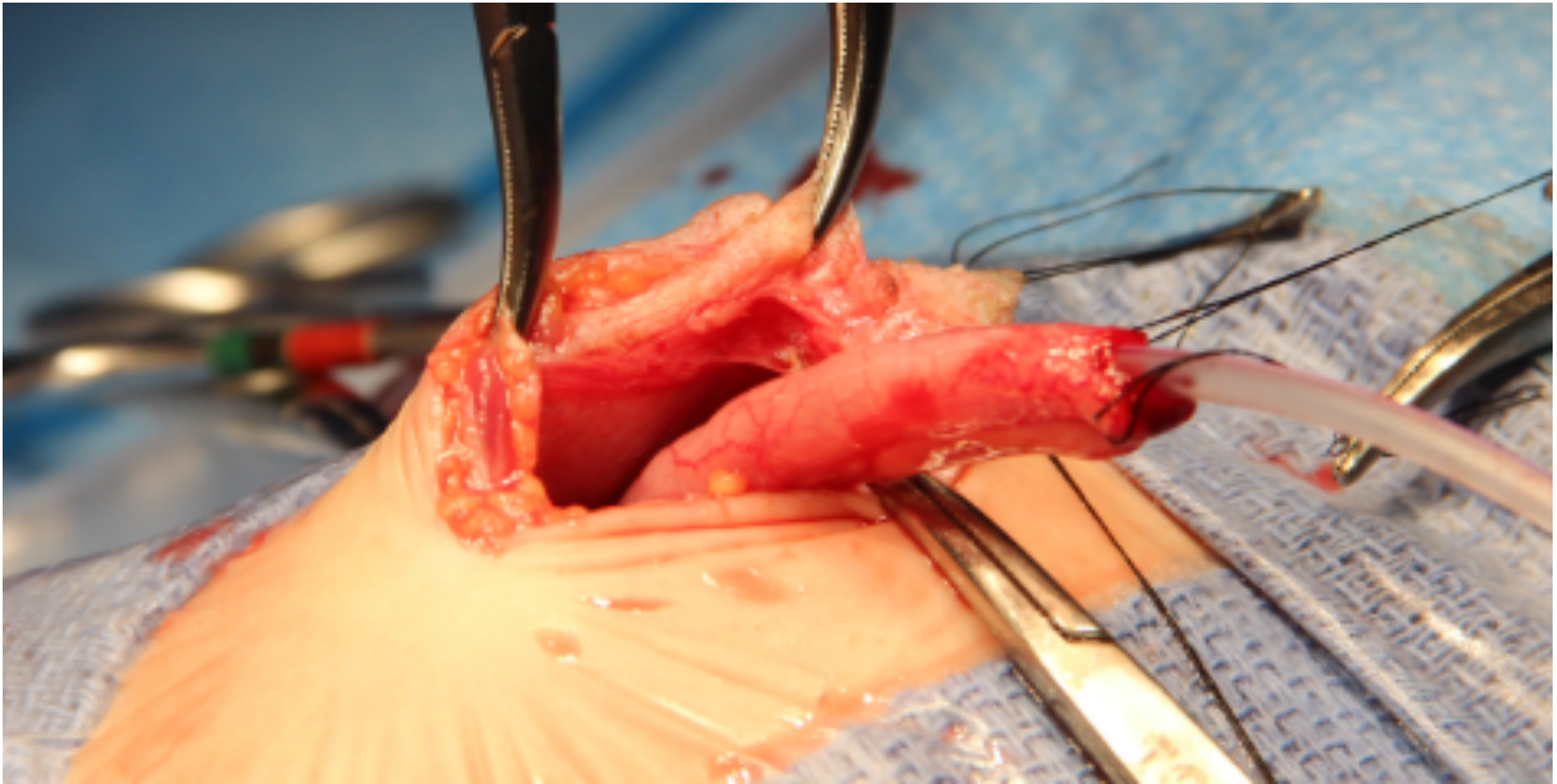


# Failed laxative trial

- 45 mg of senna up to 52.5 mg of senna + fiber
- Unable to achieve voluntary bowel movements







INTERNATIONAL CENTER FOR  
**COLORECTAL AND  
UROGENITAL CARE**

