

Case # 2

09/21/2017



Children's Hospital Colorado

INTERNATIONAL CENTER FOR
**COLORECTAL AND
UROGENITAL CARE**



- 19 yo female patient with history of life-long constipation.
- Presented to the emergency room 6 months prior, complaining of fever and respiratory distress.
- Diagnosed with bilateral empyema, meningitis, sepsis, and the presence of an abscess in the sacral area.



- Admitted to the Intensive Care Unit, received antibiotics.
- Colostomy was opened and the sacral abscess was drained.
- After a stormy course, the patient recovered and was sent home with a colostomy.



- Patient was referred to us for consultation by a group of plastic surgeons.
- The wound in the sacral area was still open and draining and they were ready to close the opening with a vascularized flap.



- They specifically asked if I wanted to close the colostomy at the same time or in a separate procedure.

Would you recommend closing the  stoma during the same procedure?

1. Yes
2. No
3. I don't know

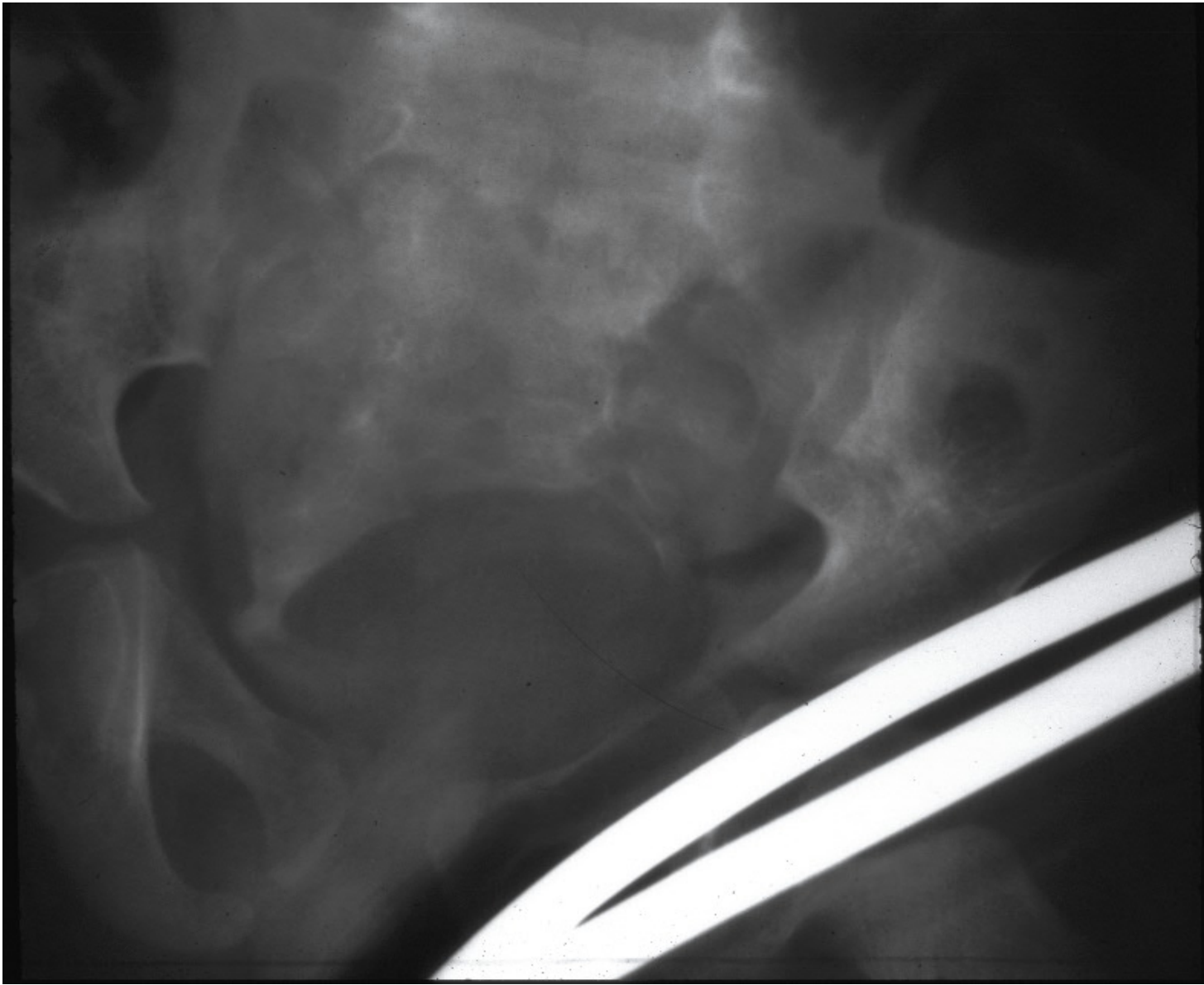
With this history which studies would you like to order?



1. Sacral X-ray
2. Distal colostogram
3. MRI of the pelvis
4. MRI of the spine
5. Options 1, 3, and 4



INTERNATIONAL CENTER FOR
**COLORECTAL AND
UROGENITAL CARE**



INTERNATIONAL CENTER FOR
**COLORECTAL AND
UROGENITAL CARE**

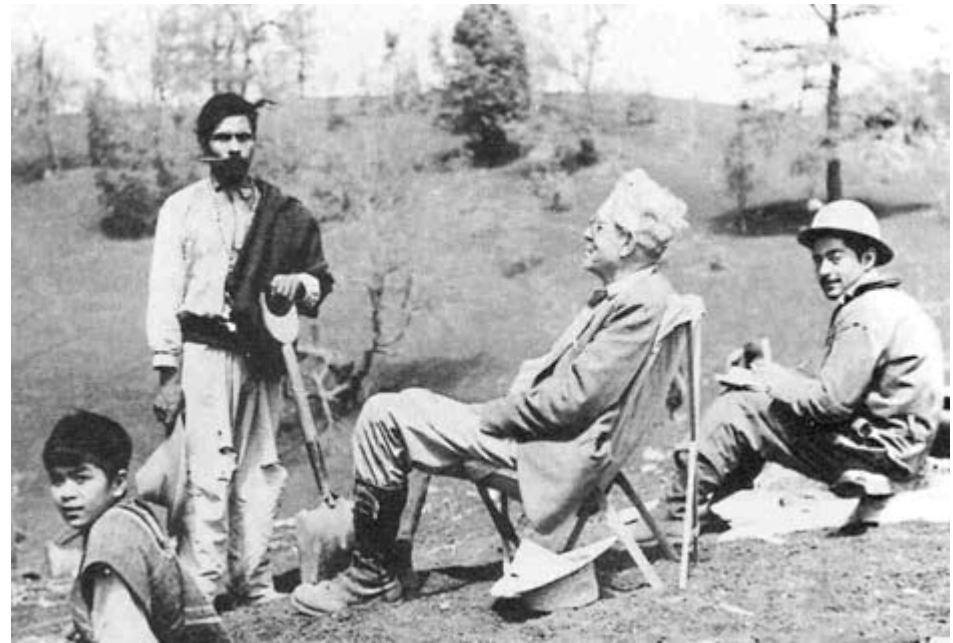
What is the diagnosis?



1. Chronically infected Pilonidal cyst
2. Sacrococcygeal teratoma
3. Presacral mass
4. I don't know



INTERNATIONAL CENTER FOR
**COLORECTAL AND
UROGENITAL CARE**





M. Volcán Parícutin
Tomada el 2º día de su nacimiento
en el Baragüi de San Mateo



Masterfile

masterfile.com/838-02502747



INTERNATIONAL CENTER FOR
**COLORECTAL AND
UROGENITAL CARE**



INTERNATIONAL CENTER FOR
**COLORECTAL AND
UROGENITAL CARE**