

# Case #3

---

Andrea Bischoff and Alexa Robbins

01/18/2024

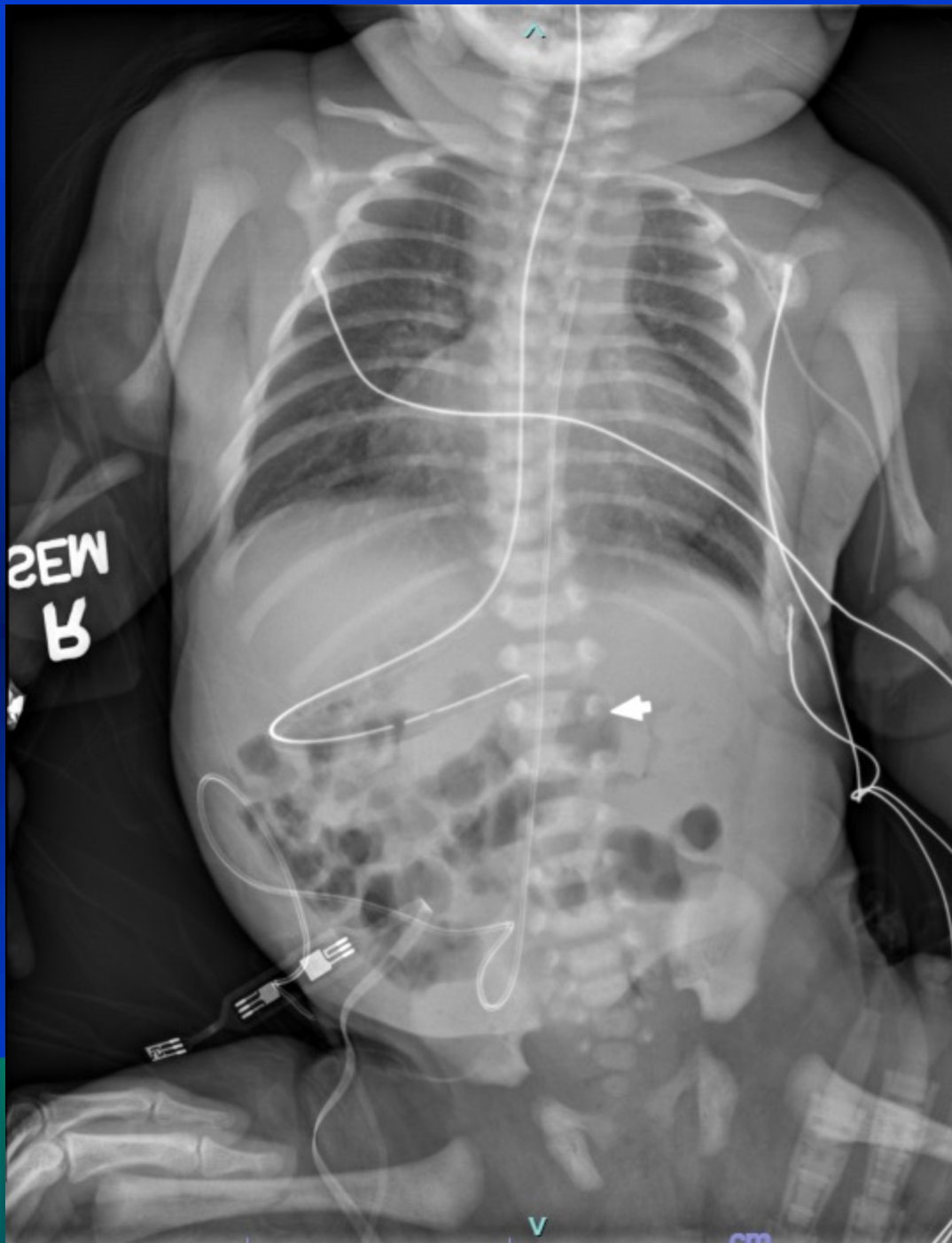


Children's Hospital Colorado

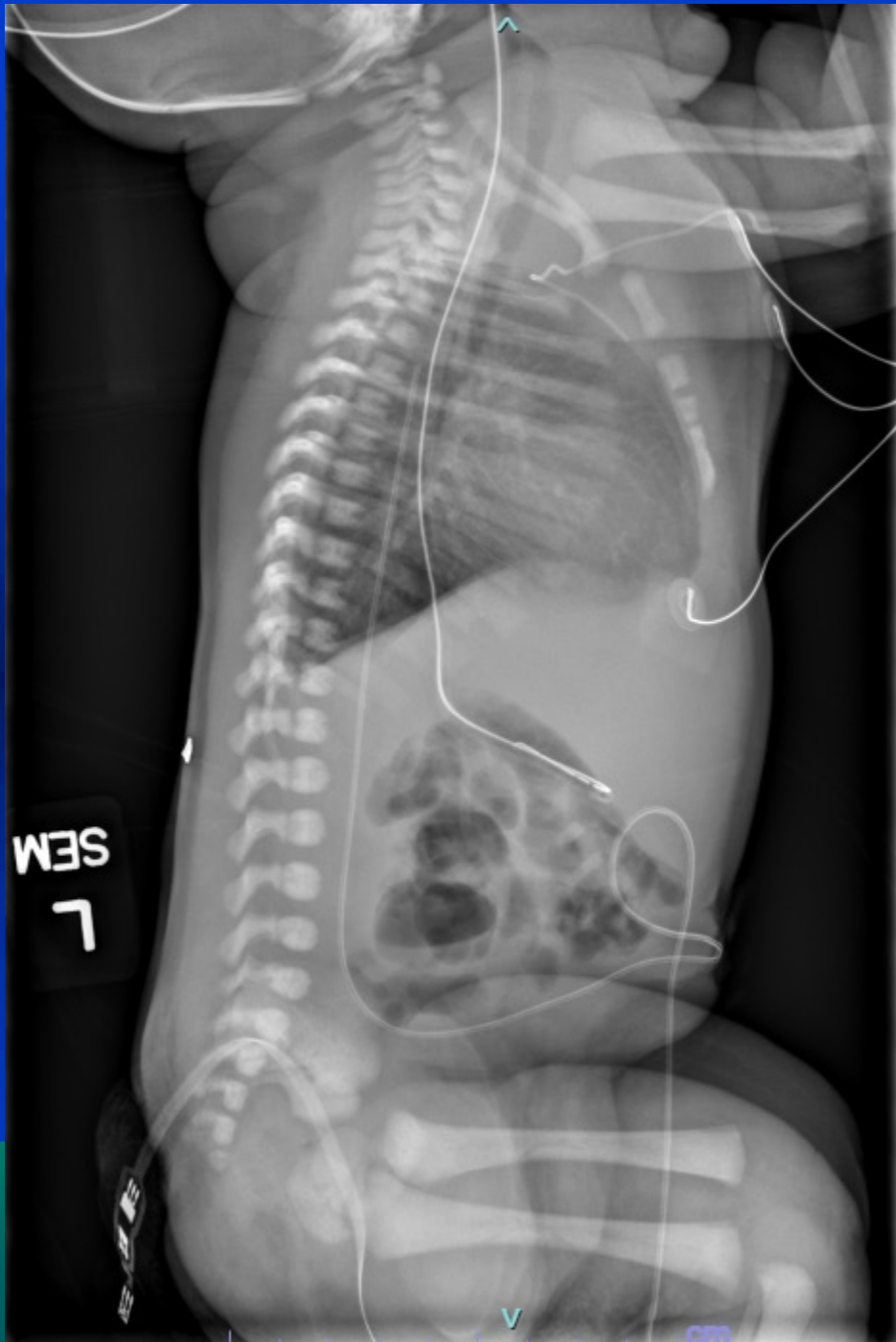
INTERNATIONAL CENTER FOR  
**COLORECTAL AND  
UROGENITAL CARE**



- Female newborn with significant cardiac malformation (single ventricle physiology, aortic atresia, dysplastic pulmonary valve), partial duplication of the left foot, and recto-vestibular fistula.



NATIONAL CENTER FOR  
**RECTAL AND  
ANAL CARE**



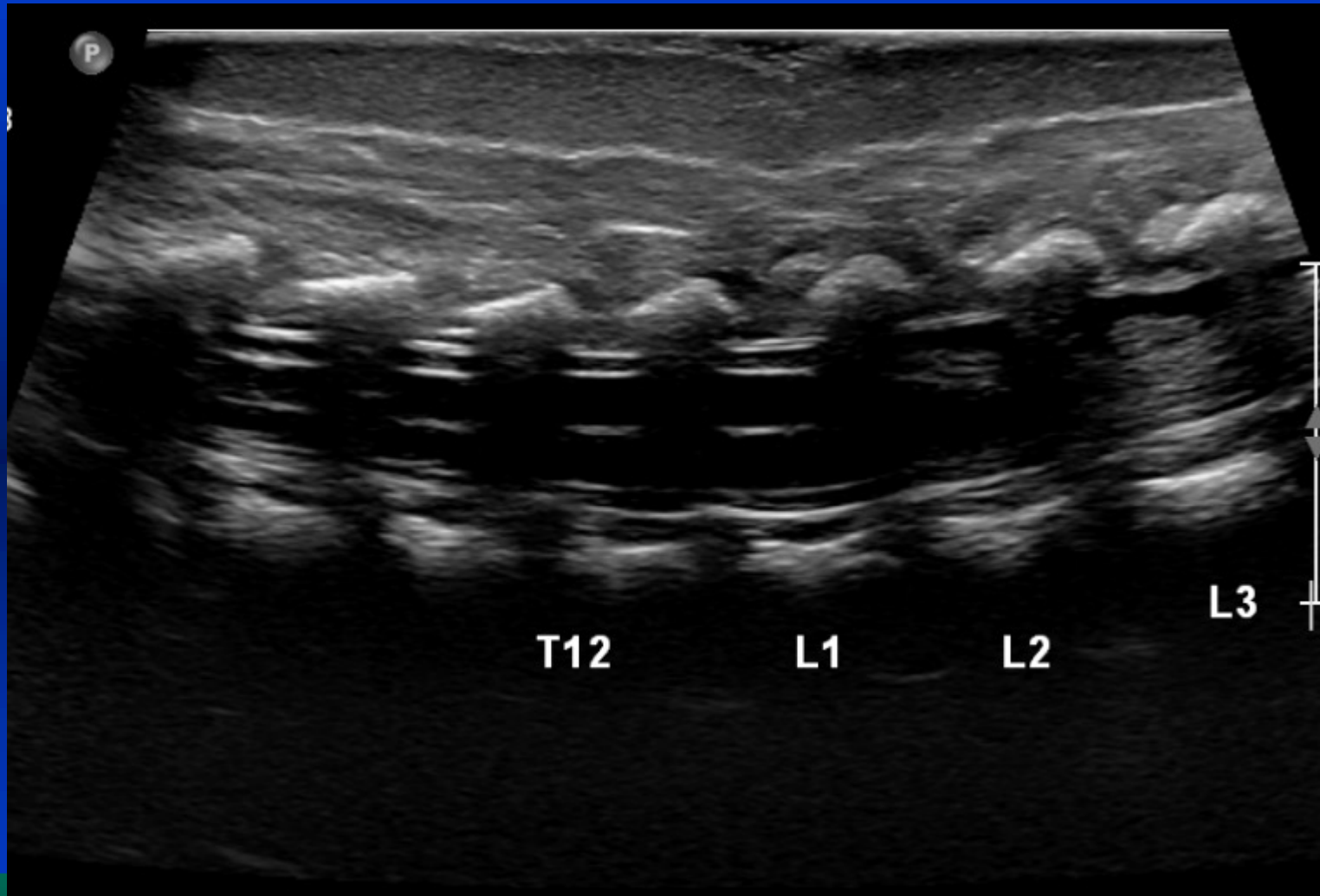
INTERNATIONAL CENTER FOR  
**COLORECTAL AND**  
**GASTROINTESTINAL CARE**







# No Tethered Cord





# What are the chances for bowel control?

1. Excellent
2. Poor
3. I am not sure





INTERNATIONAL CENTER FOR  
**COLORECTAL AND  
UROGENITAL CARE**



# Points for Discussion

- Time of operation for the anorectal malformation
- Time of operation for the foot
- Patient will need a heart transplant to survive outside the hospital



# Beyond Survival

- Bowel control
- Neurologic challenges
- Difficulties with ambulation
- Immunosuppression
- Financial/Time burdens
- Family demands



# “Do nothing”

- Do we truly offer patients and their families the option to pursue non-operative treatment?
- “What are you willing to go through for the chance of more time?”



# Surgical Buy-in

- Concept that when a patient consents to surgery they are also promising to endure intensive treatments in the post operative period if necessary
  - Dialysis, prolonged ventilation, feeding tubes
  - Immunosuppression

Schwarze ML, Bradley CT, Brasel KJ. Surgical "buy-in": the contractual relationship between surgeons and patients that influences decisions regarding life-supporting therapy. Crit Care Med. 2010 Mar;38(3):843-8. doi: 10.1097/CCM.0b013e3181cc466b. PMID: 20048678; PMCID: PMC3042894.

# Surgical Palliative Care



- In medically complex patients, they often meet surgeons at a fork in the road
  - Continue to pursue more intensive treatment
  - Focus on comfort or set limits on scale of interventions
- Help prepare patients for a variety of outcomes



# Goal Concordant Care

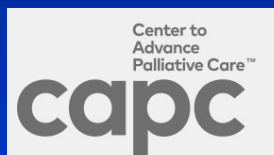


- Use your clinical expertise to determine what reasonable options would be
- Determine your patient and their families value systems
  - What is important to them
- Make a recommendation



# Goals of Care

- What are you most worried about?
- What are you hopeful for?
- What are you expecting to happen?
- Is there any health status that would be unacceptable to you?





Thank you.

INTERNATIONAL CENTER FOR  
**COLORECTAL AND  
UROGENITAL CARE**