

# Case #3

---

Andrea Bischoff

07/23/2020



Children's Hospital Colorado

INTERNATIONAL CENTER FOR  
**COLORECTAL AND  
UROGENITAL CARE**



10-month-old female patient  
born with and operated on for  
anorectal malformation,  
complicated by dehiscence and  
stricture



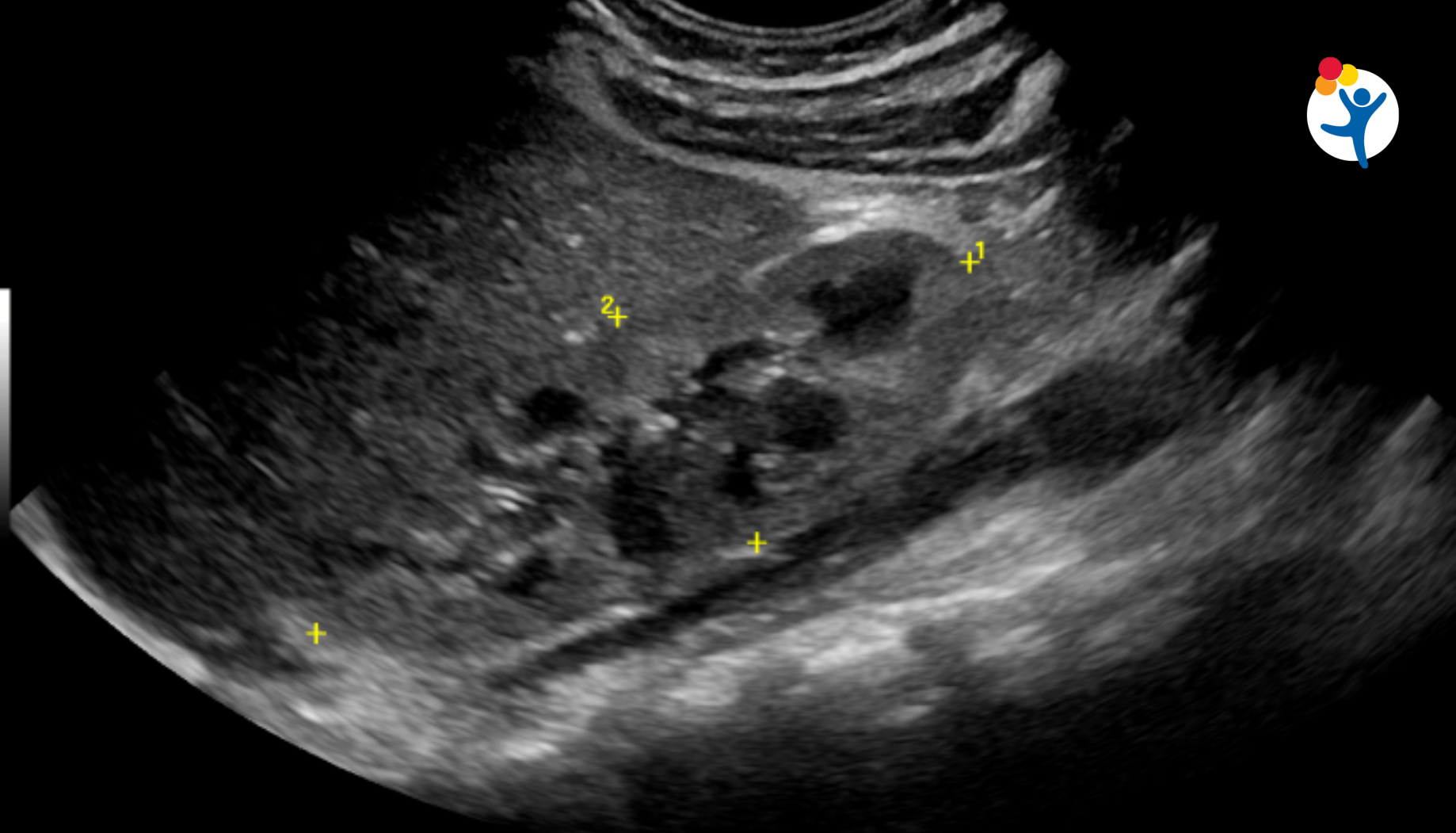
# Procedures prior to referral:

1. Resuturing of perineal body
2. Colostomy + resuturing of anoplasty
3. Anal dilation under anesthesia
4. Anal dilation under anesthesia
5. Anal dilation under anesthesia + Kenalog injection
6. Anal dilation under anesthesia + Kenalog injection



INTERNATIONAL CENTER FOR  
**COLORECTAL AND  
UROGENITAL CARE**





2+

1+

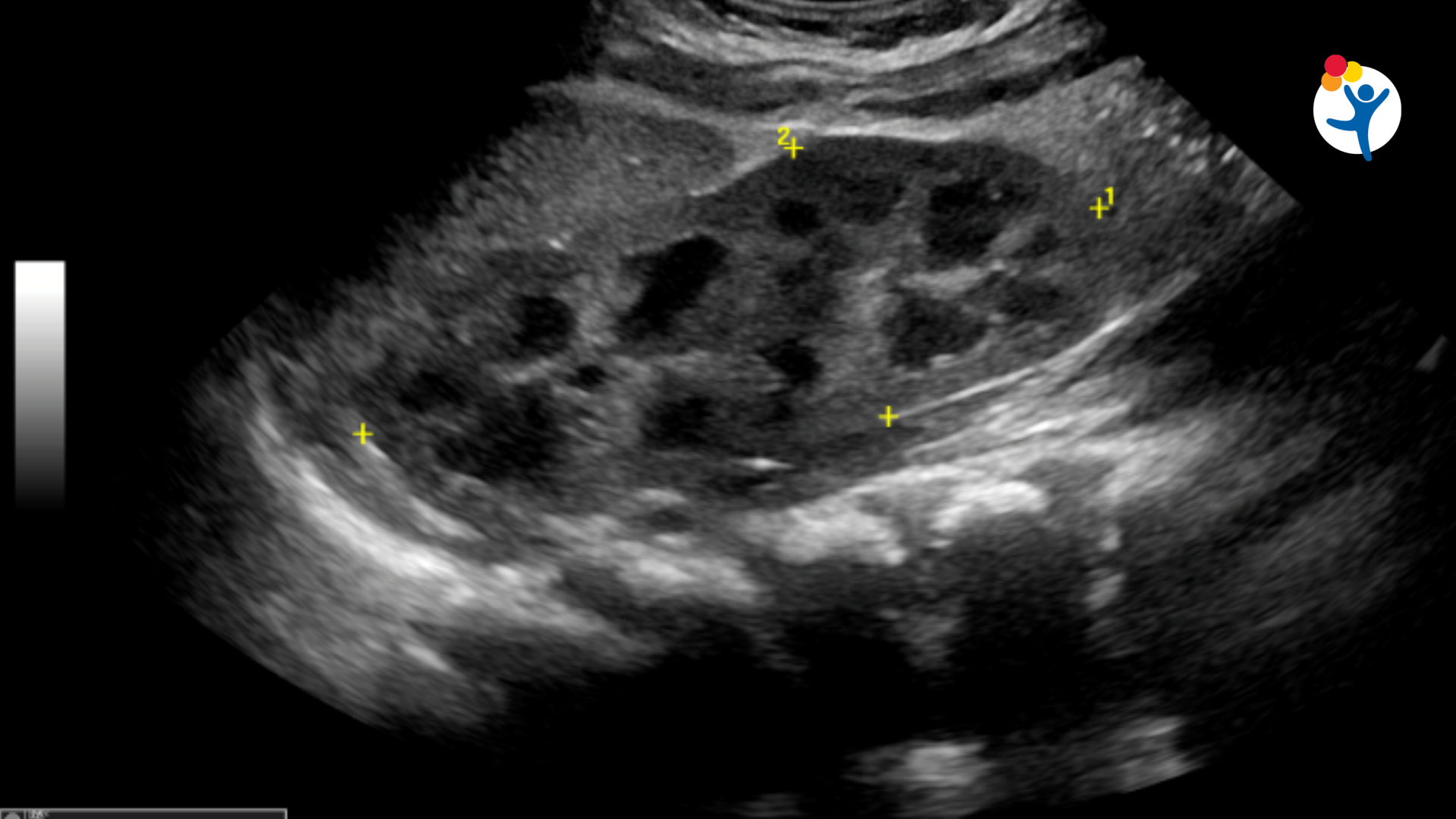
+

+

RT KIDNEY LONG MID

1 Rt Renal L 5.38 cm  
2 Rt Renal H 1.90 cm





1	Lt Renal L 5.54 cm
2	Lt Renal H 2.05 cm

LT KIDNEY LONG MID







# What was her original malformation?




1. Recto-perineal fistula
2. Recto-vestibular fistula
3. Cloaca
4. I don't know

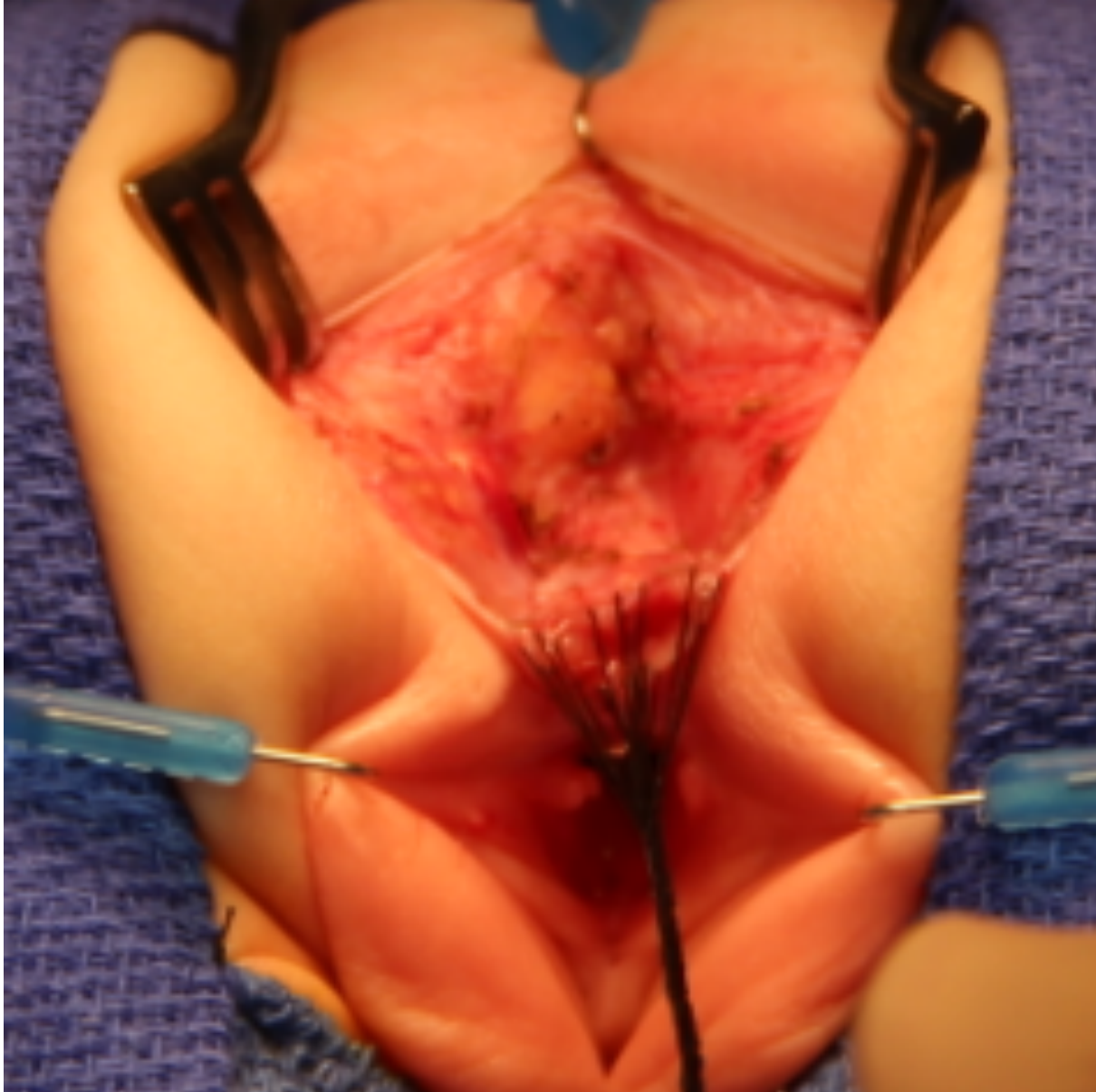
# What are the indications for a reoperation in this case?



1. Mislocation
2. Absent perineal body
3. Stricture
4. All of above
5. I don't know

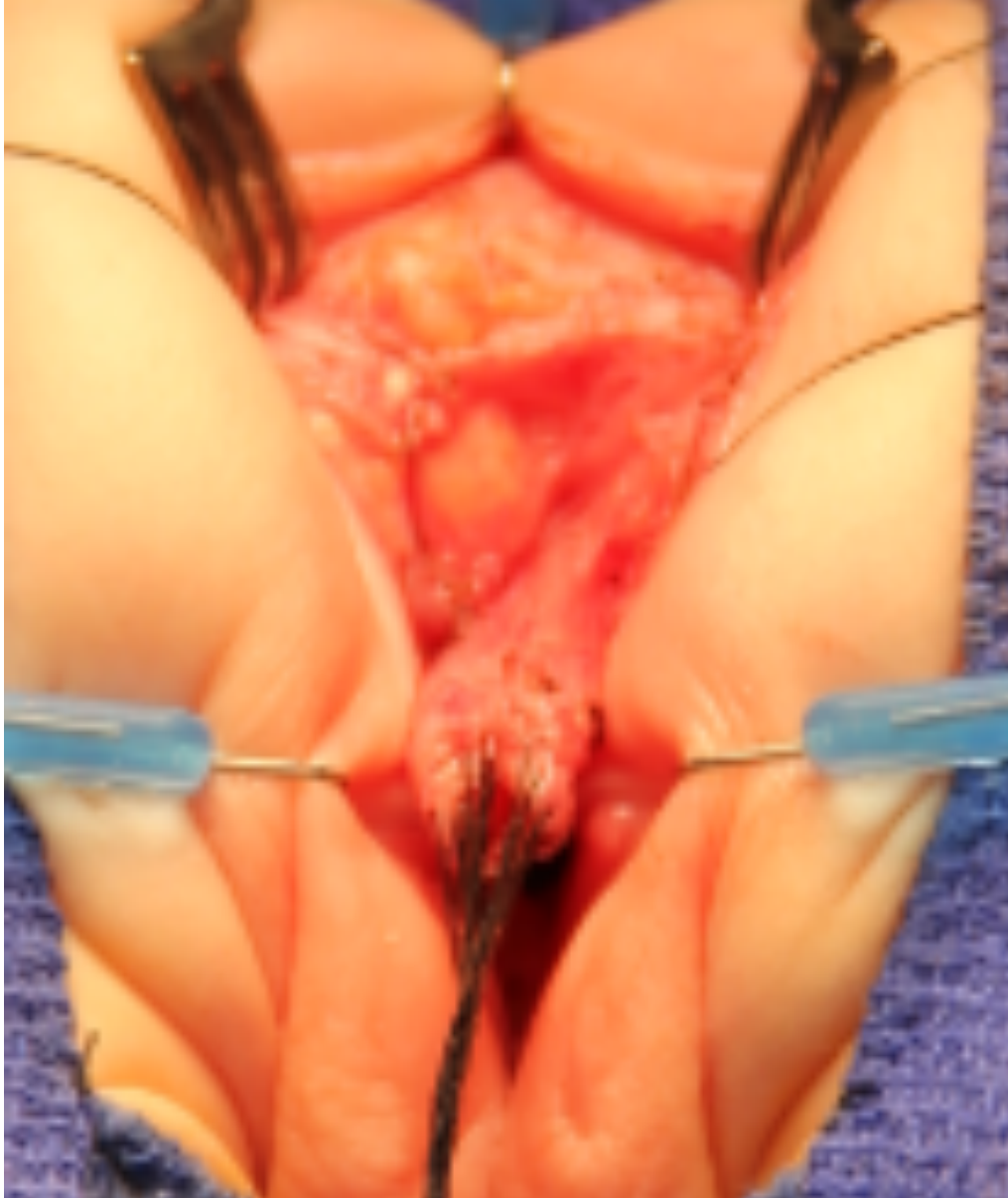
Of the indications for a reoperation in this case, which one is the most important? 

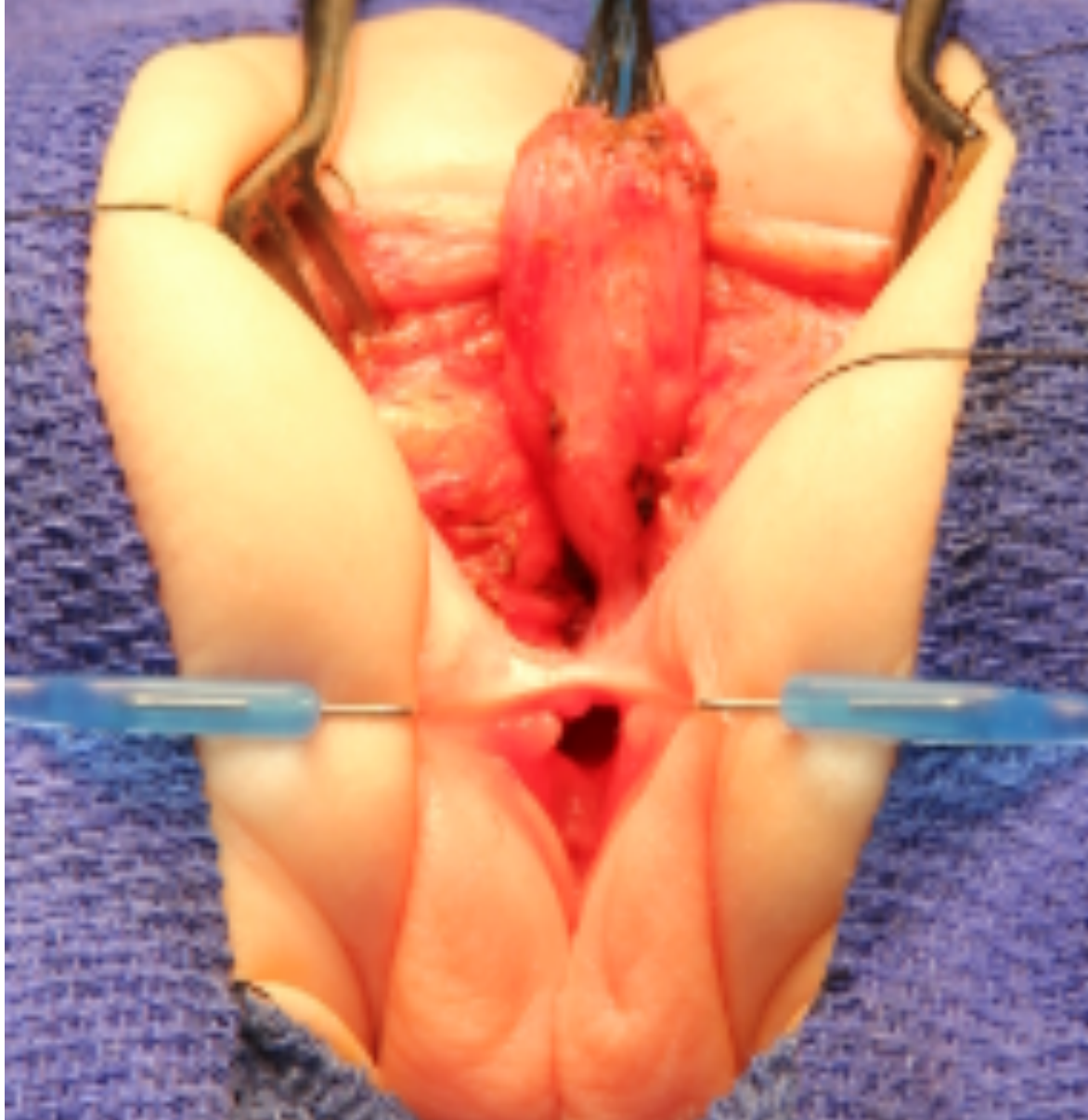
1. Mislocation
2. Absent perineal body
3. Stricture
4. I don't know

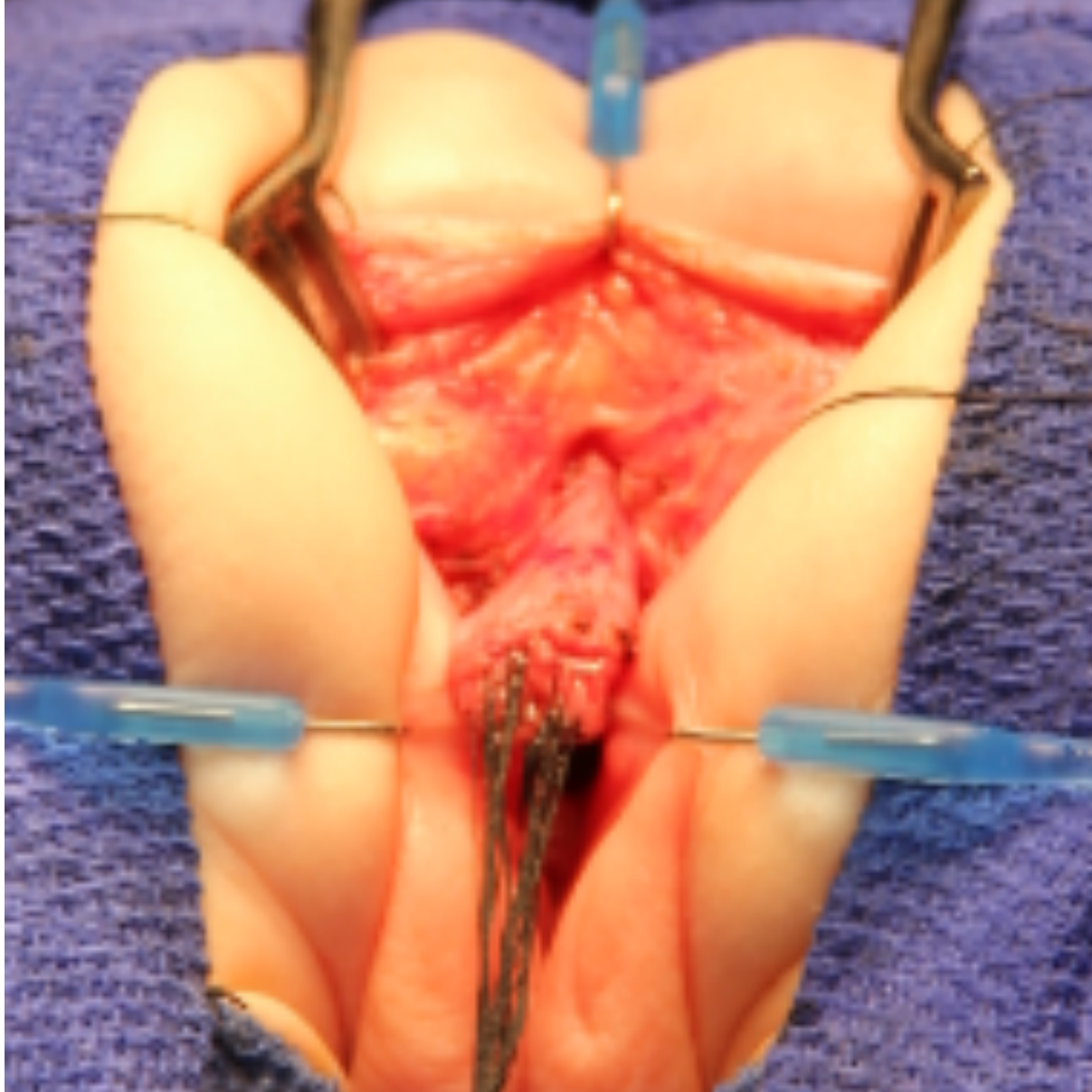


INTERNATIONAL CENTER FOR  
**COLORECTAL AND  
UROGENITAL CARE**

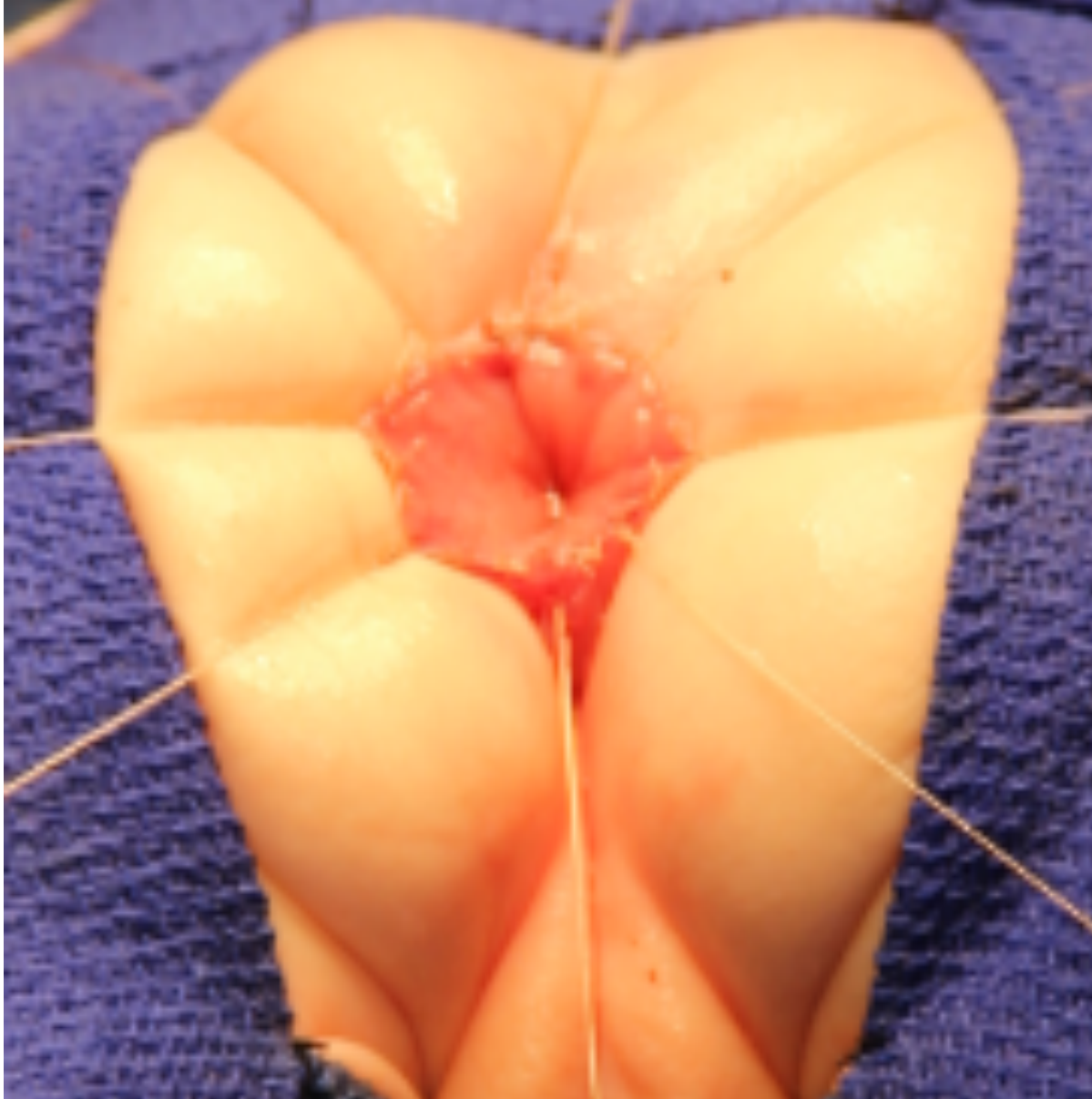














INTERNATIONAL CENTER FOR  
**COLORECTAL AND  
UROGENITAL CARE**