

Case #3

Andrea Bischoff, MD

11/18/2021



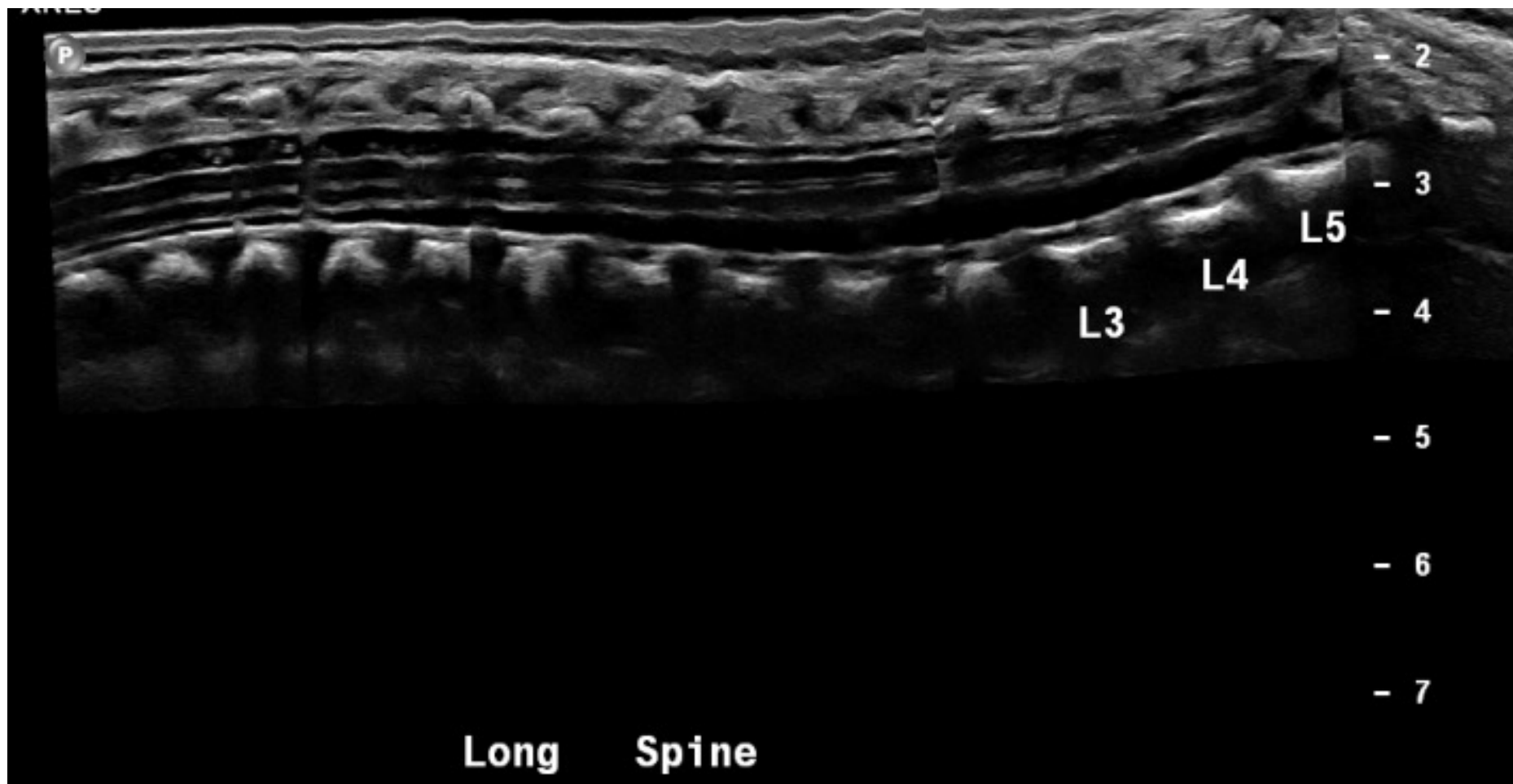
Children's Hospital Colorado

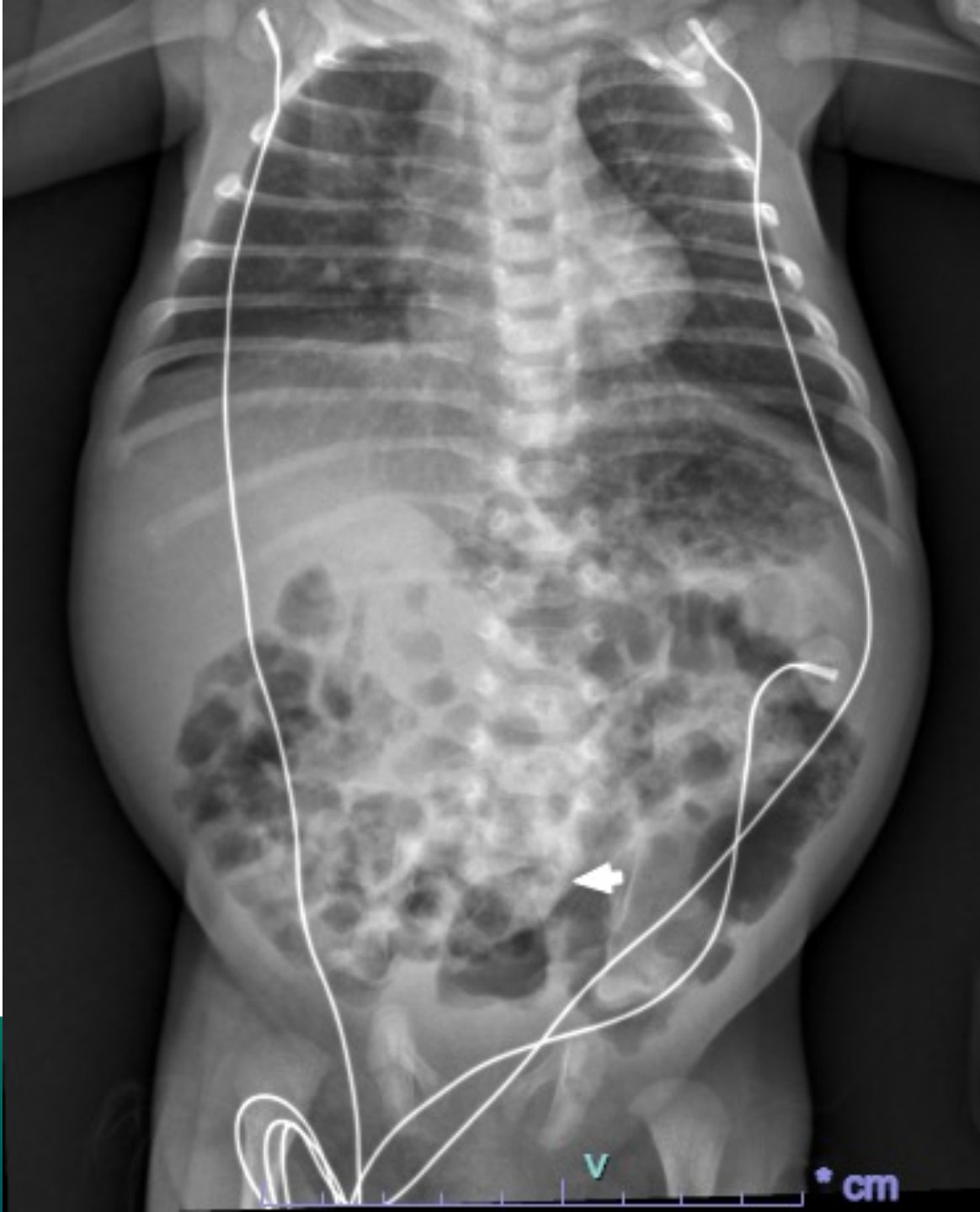
INTERNATIONAL CENTER FOR
**COLORECTAL AND
UROGENITAL CARE**

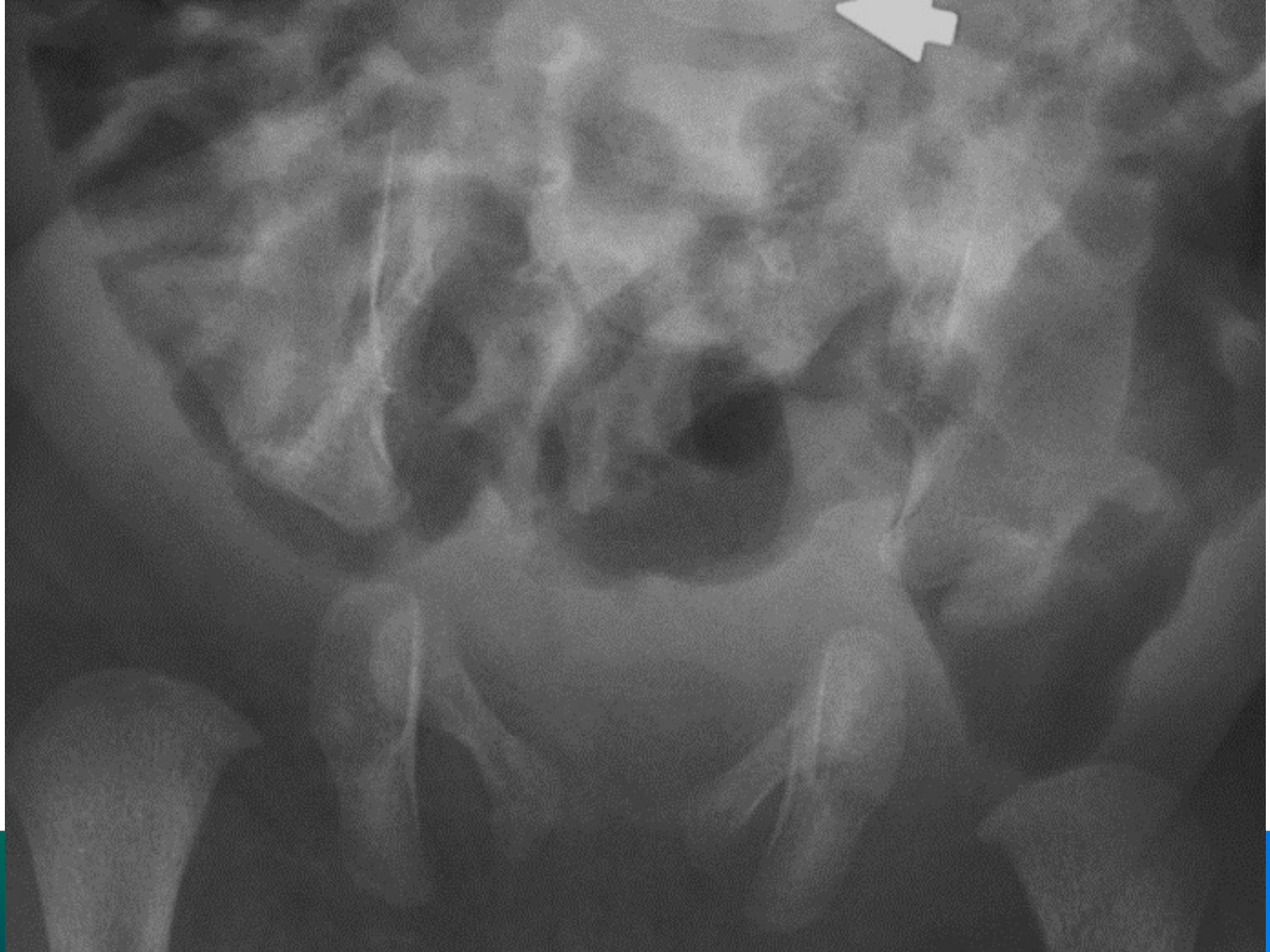


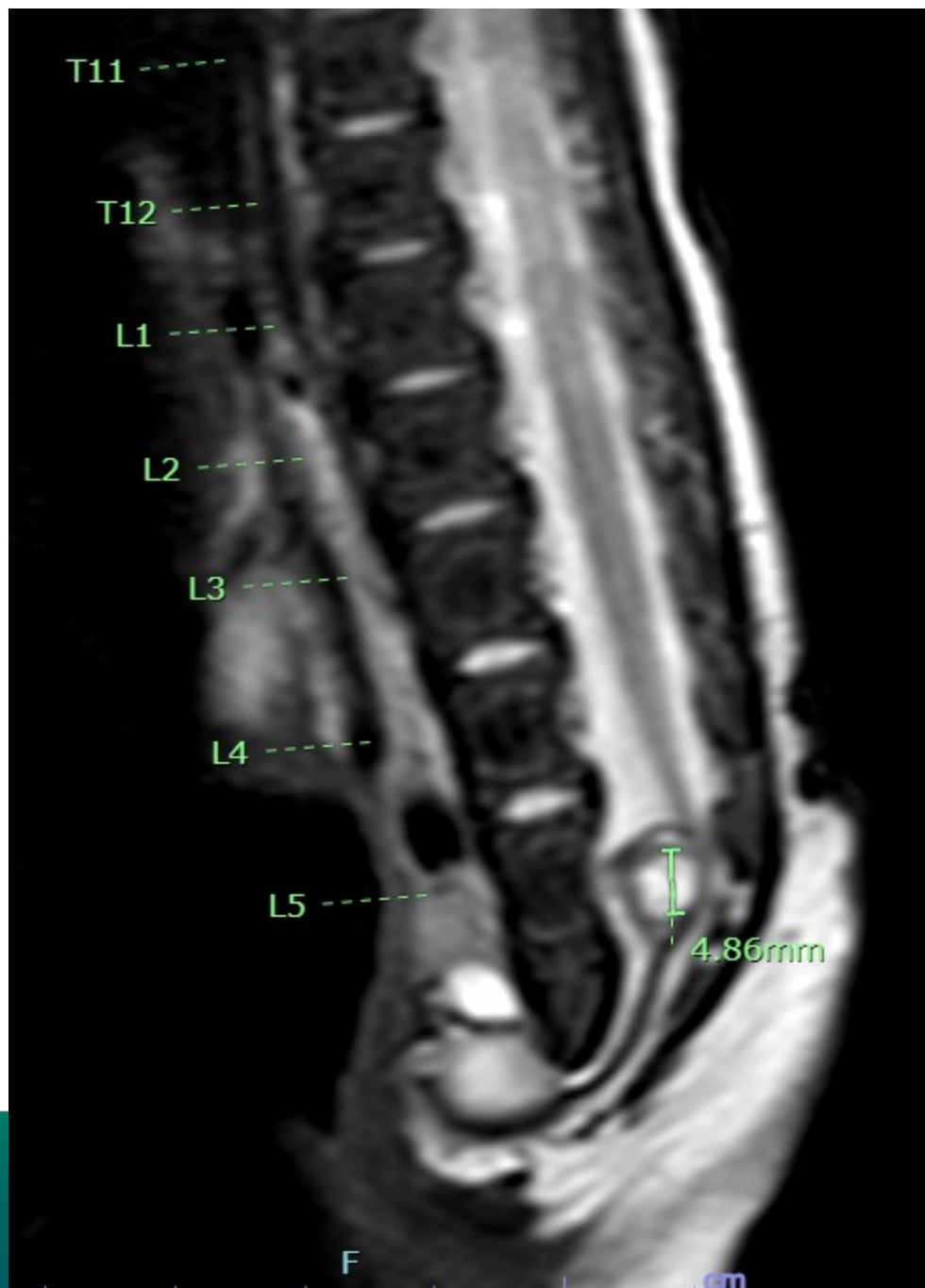
- Male patient born with several congenital anomalies:
 - Pathogenic deletion of 7q36
 - Chordee + left hyrourethronephrosis
 - Low lying conus on ultrasound (L5)
 - Cleft palate
 - Low set of ears

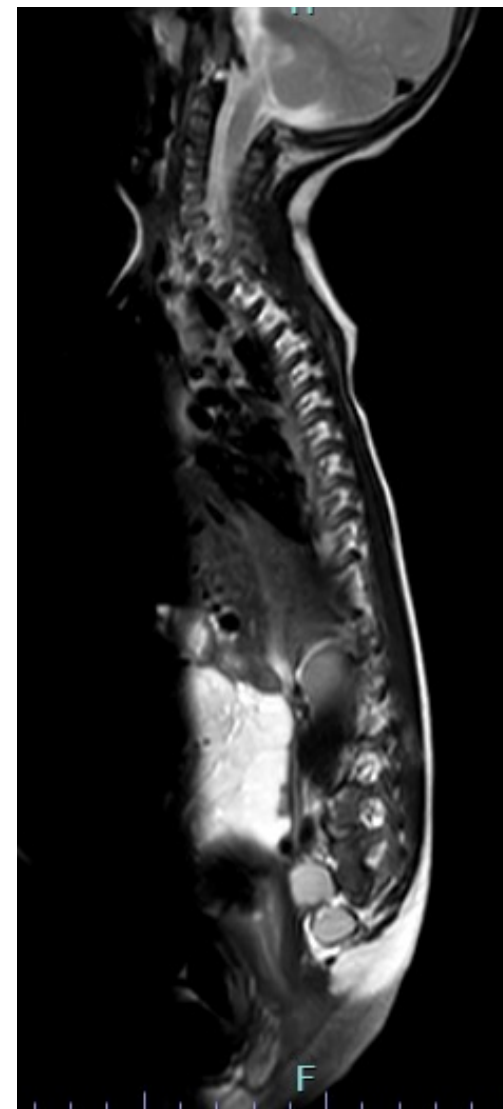
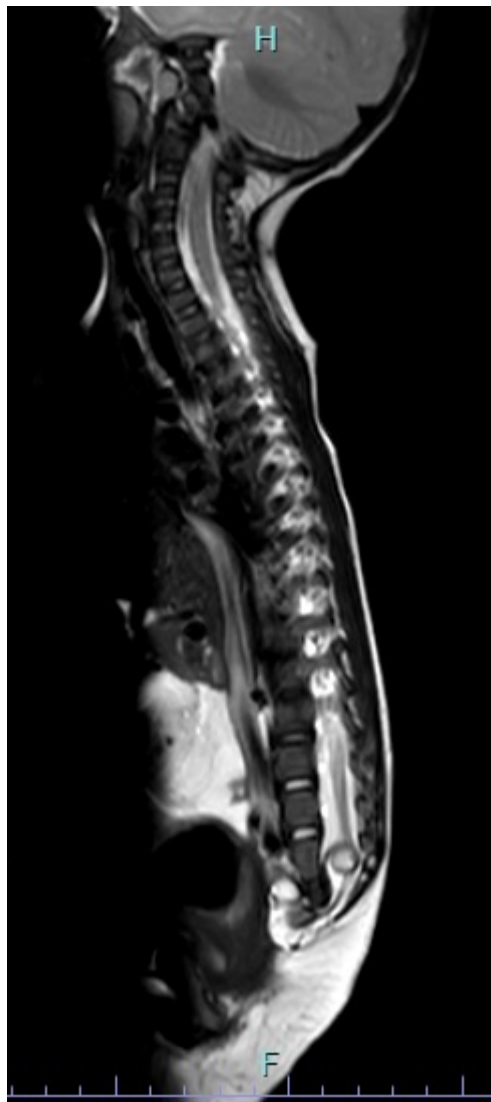














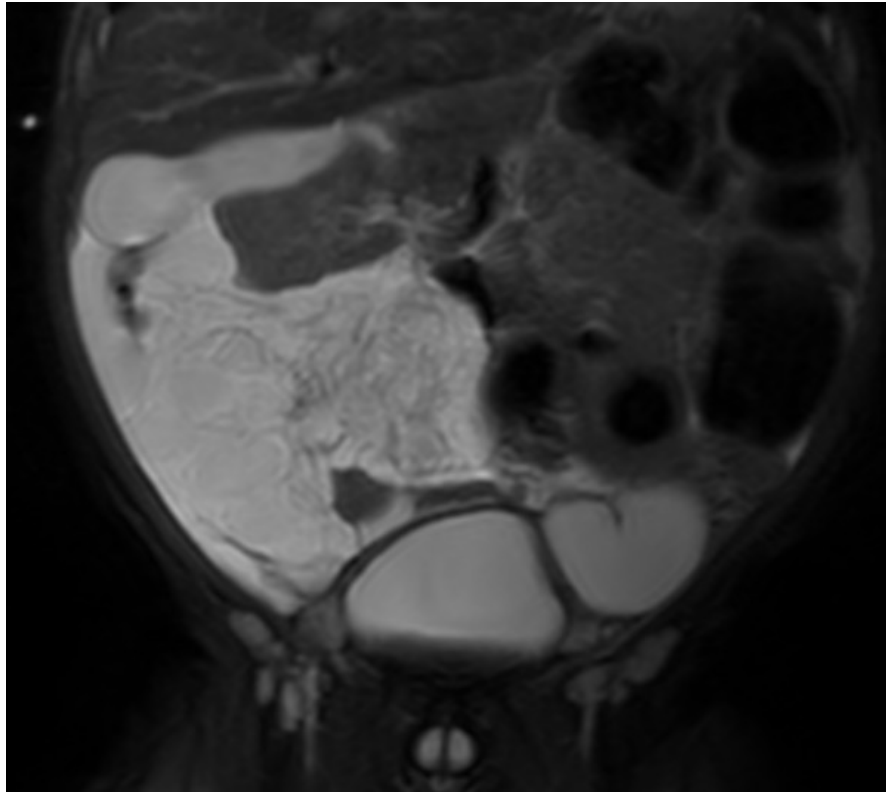
- Underwent detethering of spinal cord + cyst removal
 - Mature teratoma



What anorectal malformation must be excluded (patient is already 6 months old)?

1. Anorectal stenosis
2. Recto-perineal fistula
3. All of the above
4. I don't know

On repeated MRI, in preparation for our surgery, found to have intra-abdominal lymphatic malformation





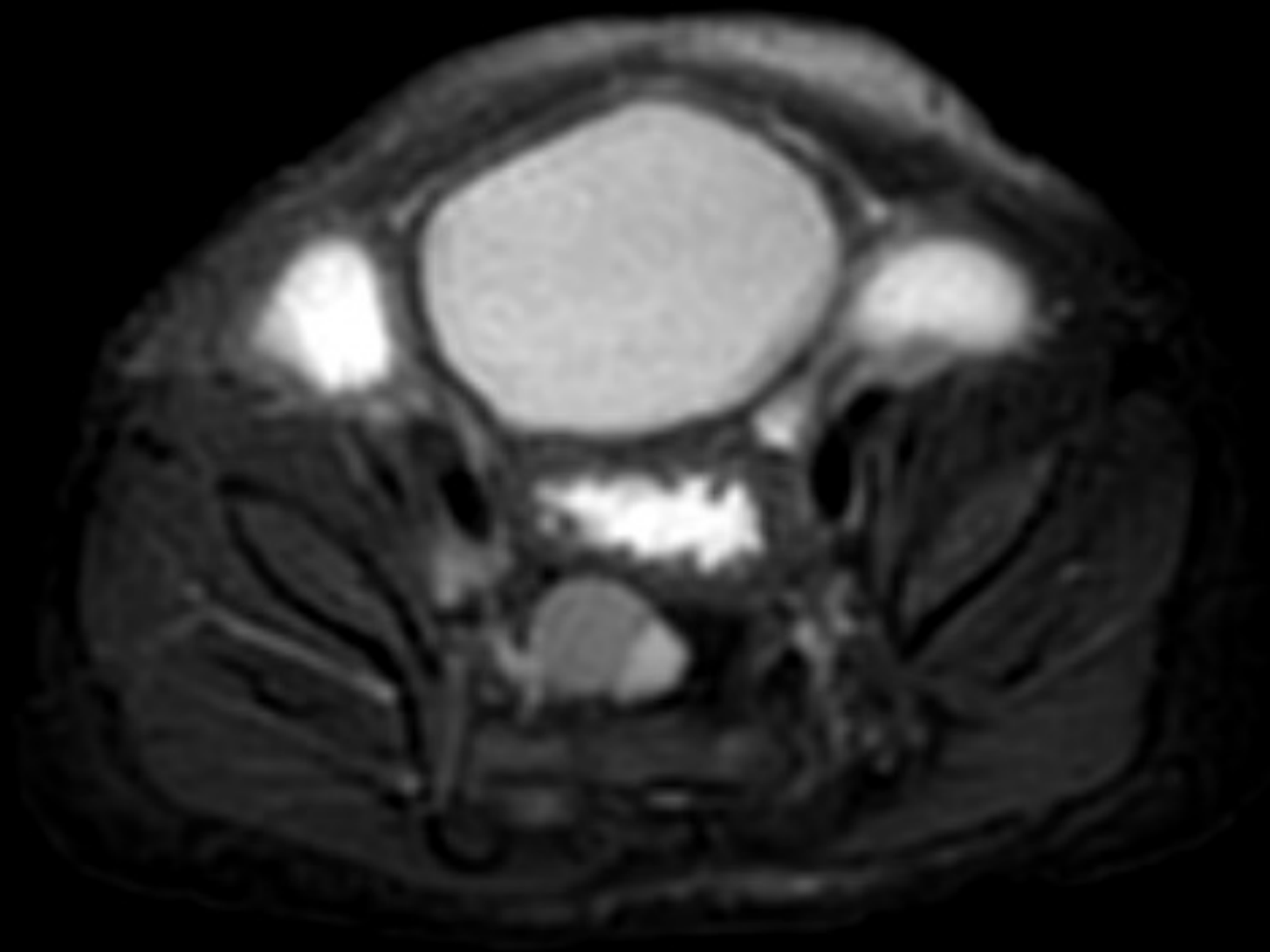
- Underwent surgery for lymphatic malformation removal



NATIONAL CENTER FOR
**RECTAL AND
ANAL CARE**



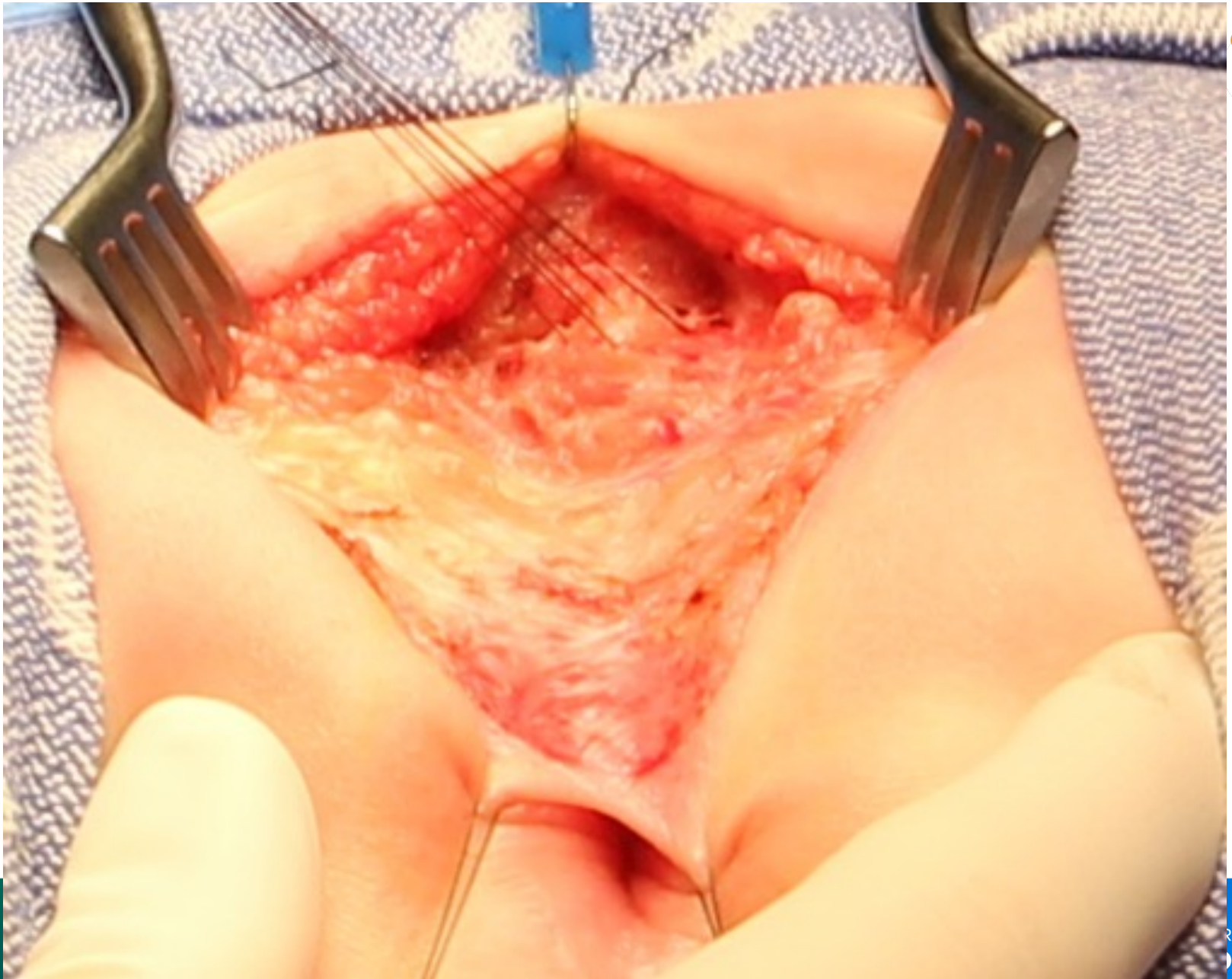
INTERNATIONAL CENTER FOR
**COLORECTAL AND
UROGENITAL CARE**

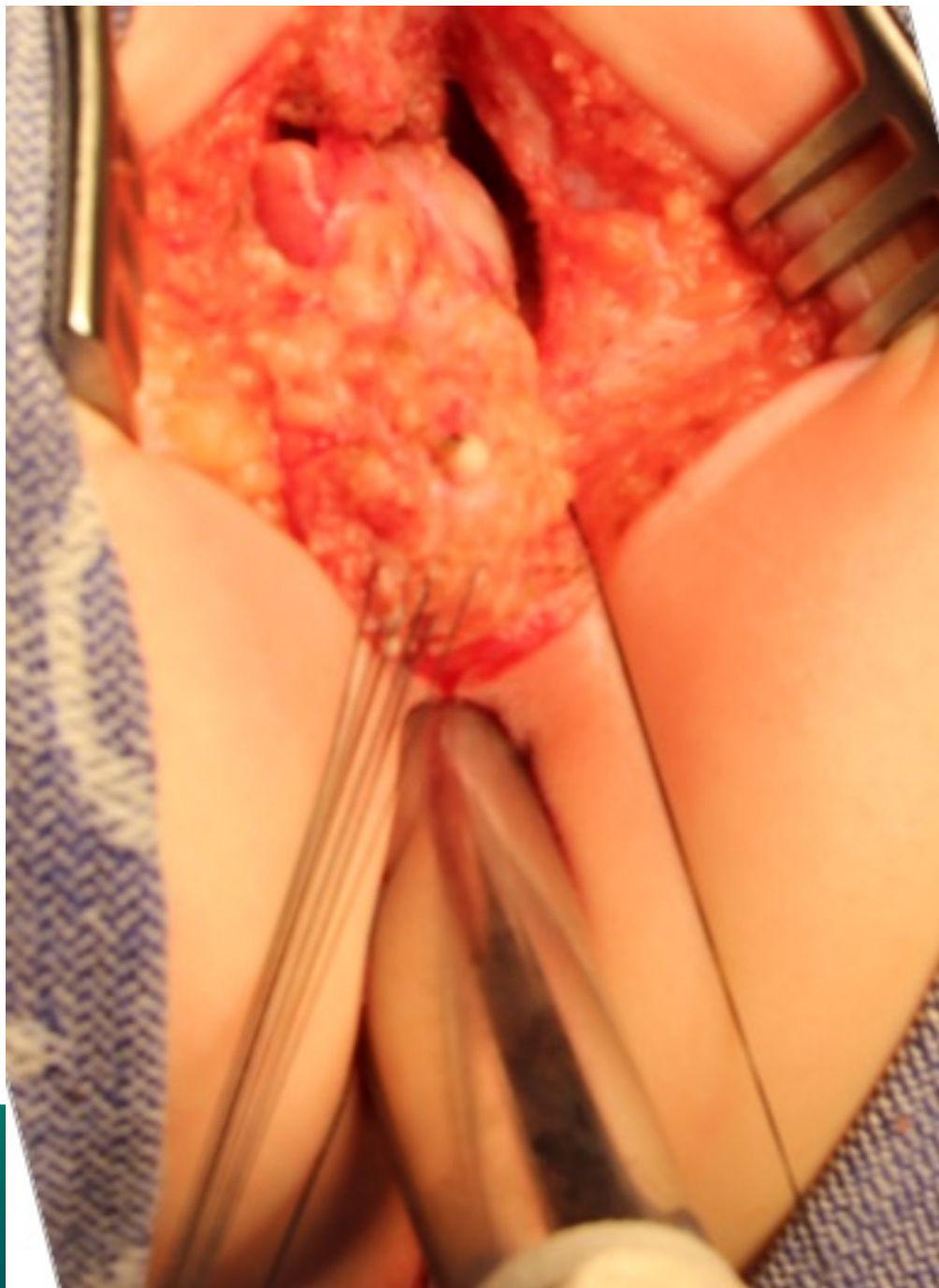




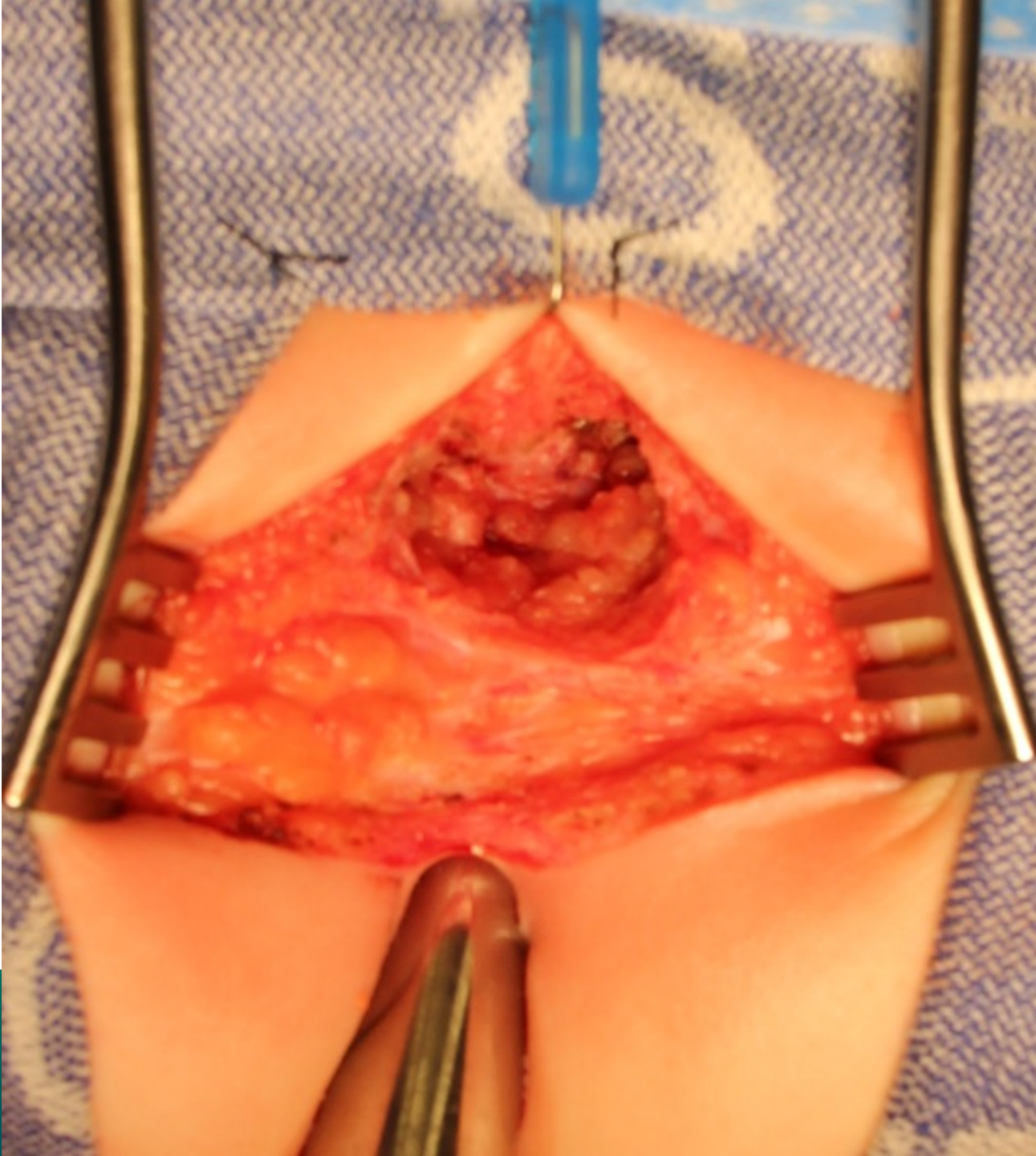








NATIONAL CENTER FOR
**ORECTAL AND
GENITAL CARE**









- Mature cystic teratoma