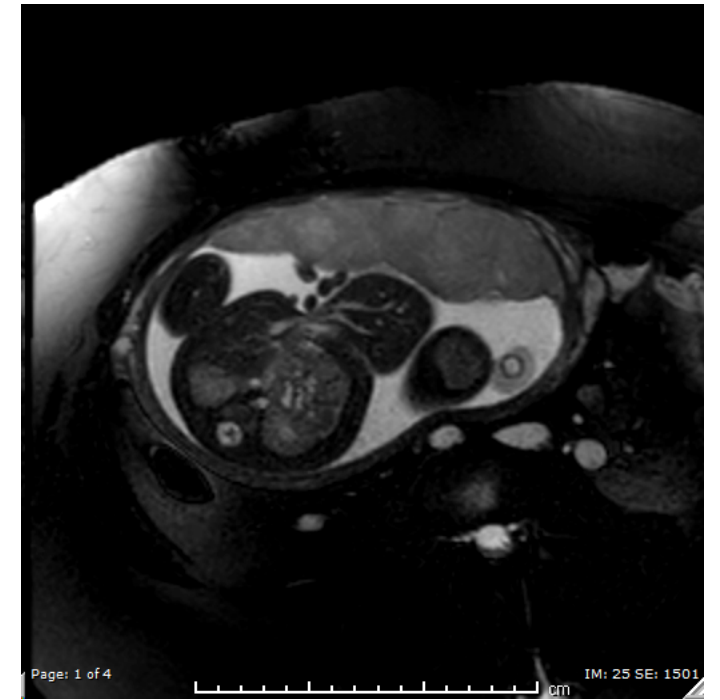
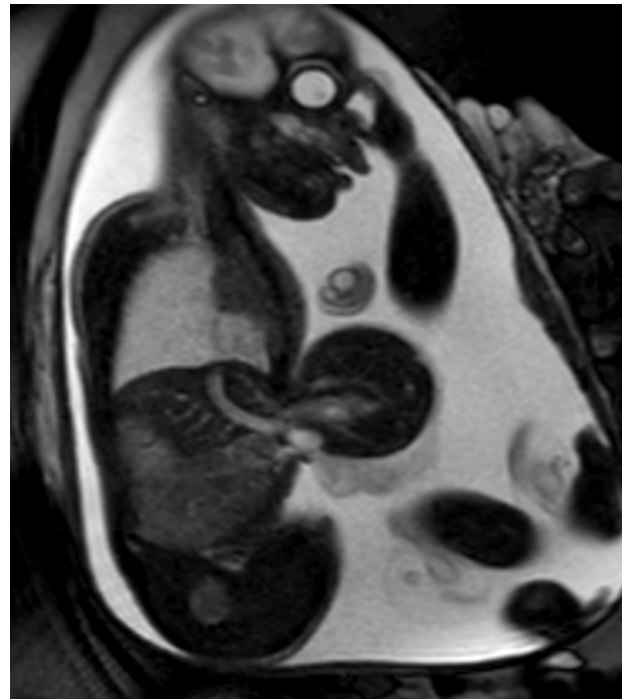


Case # 2

- Prenatally diagnosed Omphalocele
- MRI with 50% of Liver in the sac
- Defect is 6cm in width
- No other fetal anomalies
- Total lung volume is within normal range
- Fetal Echocardiogram: small VSD
- Post natal evaluation
 - Baby handled transition well
 - No oxygen requirements
 - No evidence of pulmonary hypertension on echo



Neonatal Exam



Choice of Management



1

Gross-type
closure

2

Paint and
Wait

3

Schuster
Technique

4

Primary fascial
closure with
component
separation





2nd Poll



Panelists Discussion

