

Management of the Newborn with ARM

Luis de la Torre, MD

The 66th Workshop for the Surgical Treatment
of Colorectal Problems in Children



Children's Hospital Colorado
Here, it's different.™

Neonatal Management

What is the first and most important objective you need to do in a newborn with an anorectal malformation?

1. Evaluate the sacral ratio to notify the parents about the prognosis of the fecal control
2. Discard life-threatening malformations
3. Decide if you do a colostomy
4. Decide if you do an anoplasty
5. Identify if the patient has a clinically evident fistula



Neonatal Management

- Life-threatening associated anomalies ?
- Colostomy or anoplasty?



Neonatal Management

- Does the baby have a clinically evident fistula?





Children's Hospital Colorado
Here, it's different.™

INTERNATIONAL CENTER FOR
**COLORECTAL AND
UROGENITAL CARE**



Children's Hospital Colorado
Here, it's different.™

INTERNATIONAL CENTER FOR
**COLORECTAL AND
UROGENITAL CARE**

Associated Defects

What is the most frequent congenital malformation associated in patients with imperforate anus?

1. Atrial septal defect
2. Tethered cord
3. Hemi-sacrum
4. Hydronephrosis
5. Esophageal atresia



Associated Defects

- Abdominal/kidney ultrasound
 - Hydronephrosis? (50%)
 - Hydrocolpos? (30%)
- Echocardiogram (30%)
- GI Defects 8% EA, 3% duodenal atresia
- Lumbar spine
- Sacrum hemi-sacrum and sacral ratio
- Spinal ultrasound
 - Tethered cord? (25%)



How many hours do you wait to perform a colostomy or an anoplasty?

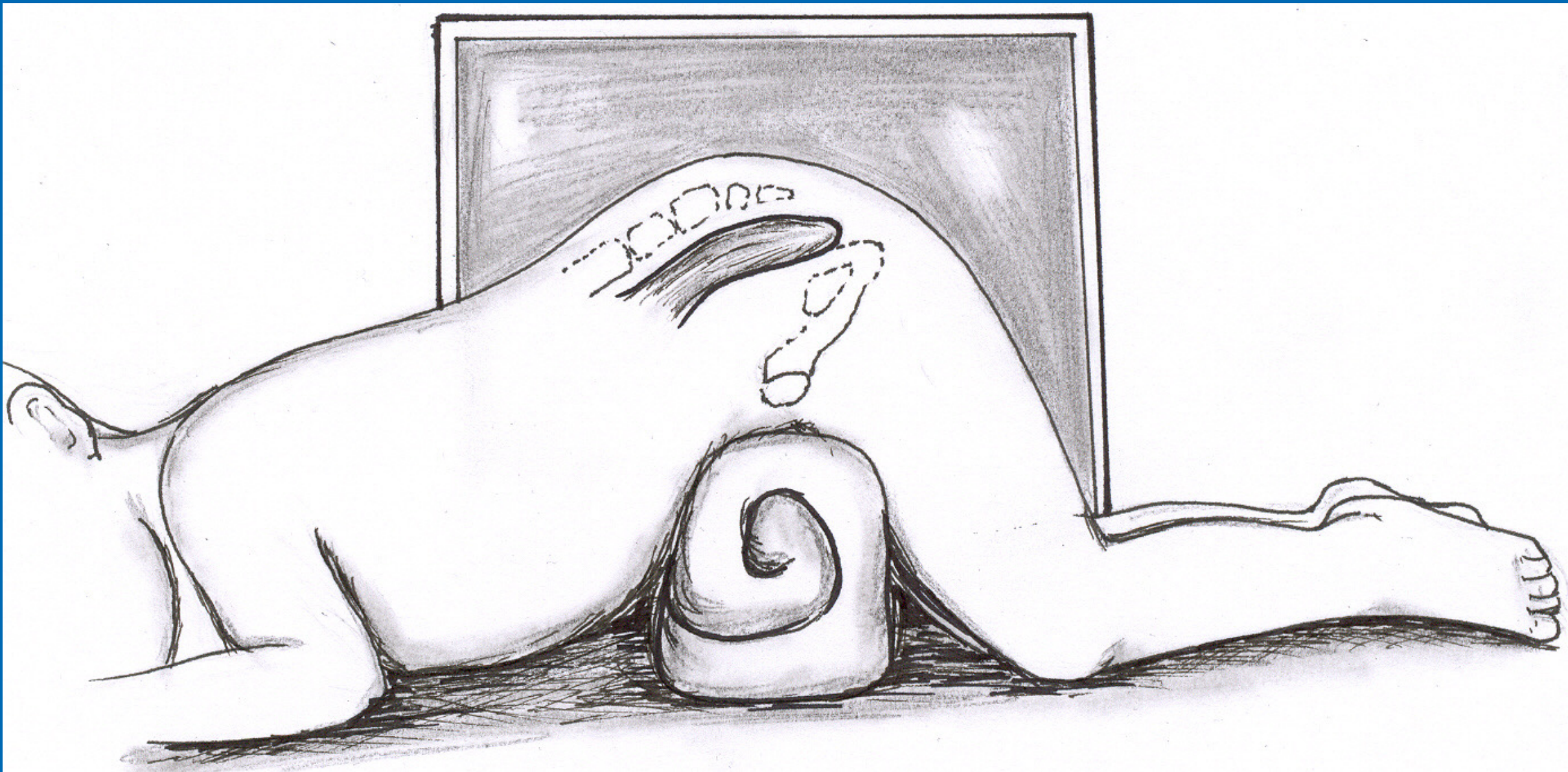
1. 48 hours
2. 12 hours
3. 24 hours
4. 36 hours
5. 72 hours



Colostomy vs. Anoplasty

- Wait 24 hrs
- Meticulous Inspection of perineum
- Urinalysis, meconuria
- Crosstable lateral film

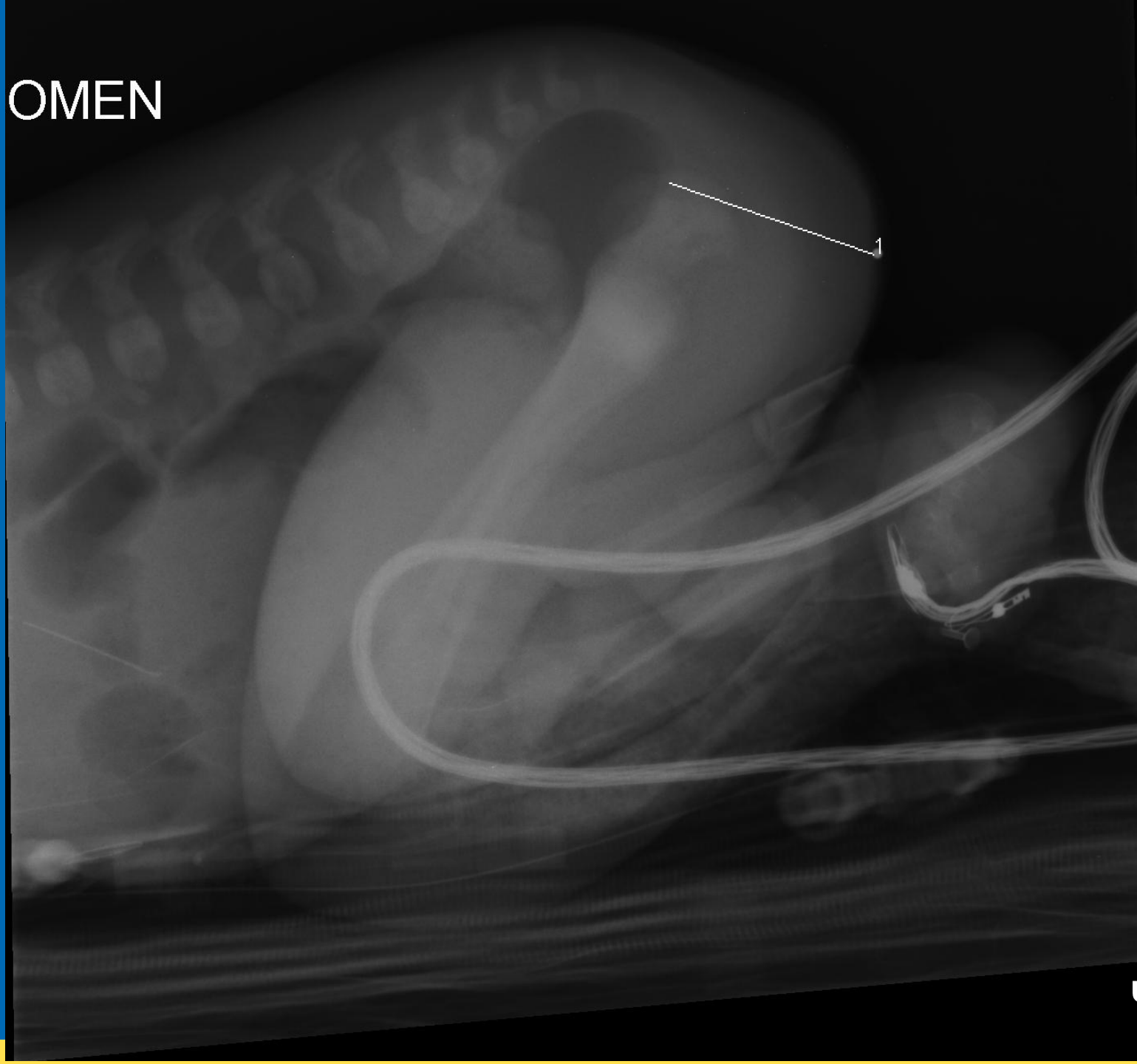




Children's Hospital Colorado
Here, it's different.™

INTERNATIONAL CENTER FOR
**COLORECTAL AND
UROGENITAL CARE**

OMEN



Children's Hospital Colorado
Here, it's different.™

INTERNATIONAL CENTER FOR
**COLORECTAL AND
UROGENITAL CARE**



Children's Hospital Colorado
Here, it's different.™

INTERNATIONAL CENTER FOR
**COLORECTAL AND
UROGENITAL CARE**

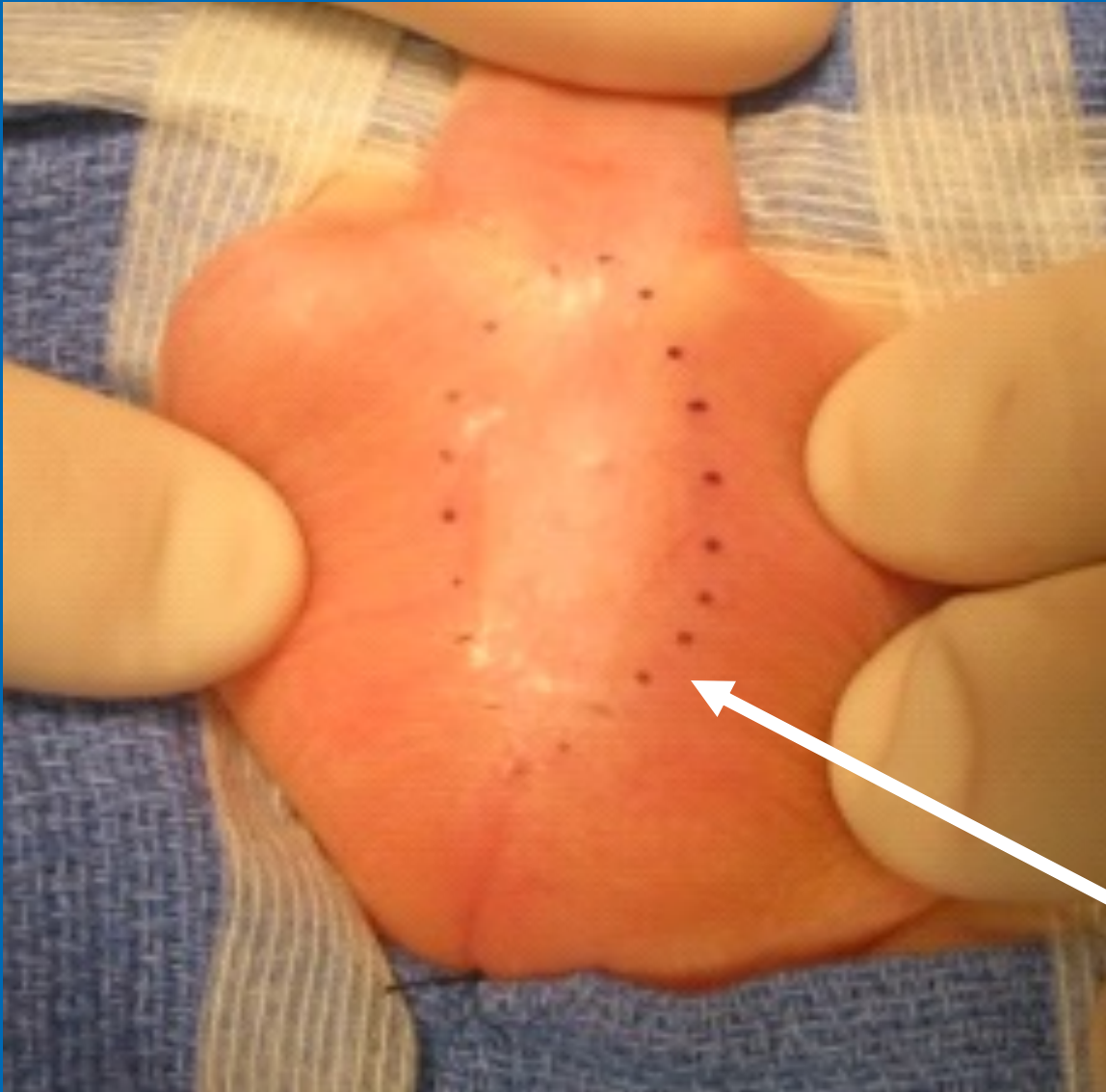


Children's Hospital Colorado
Here, it's different.™

INTERNATIONAL CENTER FOR
**COLORECTAL AND
UROGENITAL CARE**

Bifid Scrotum

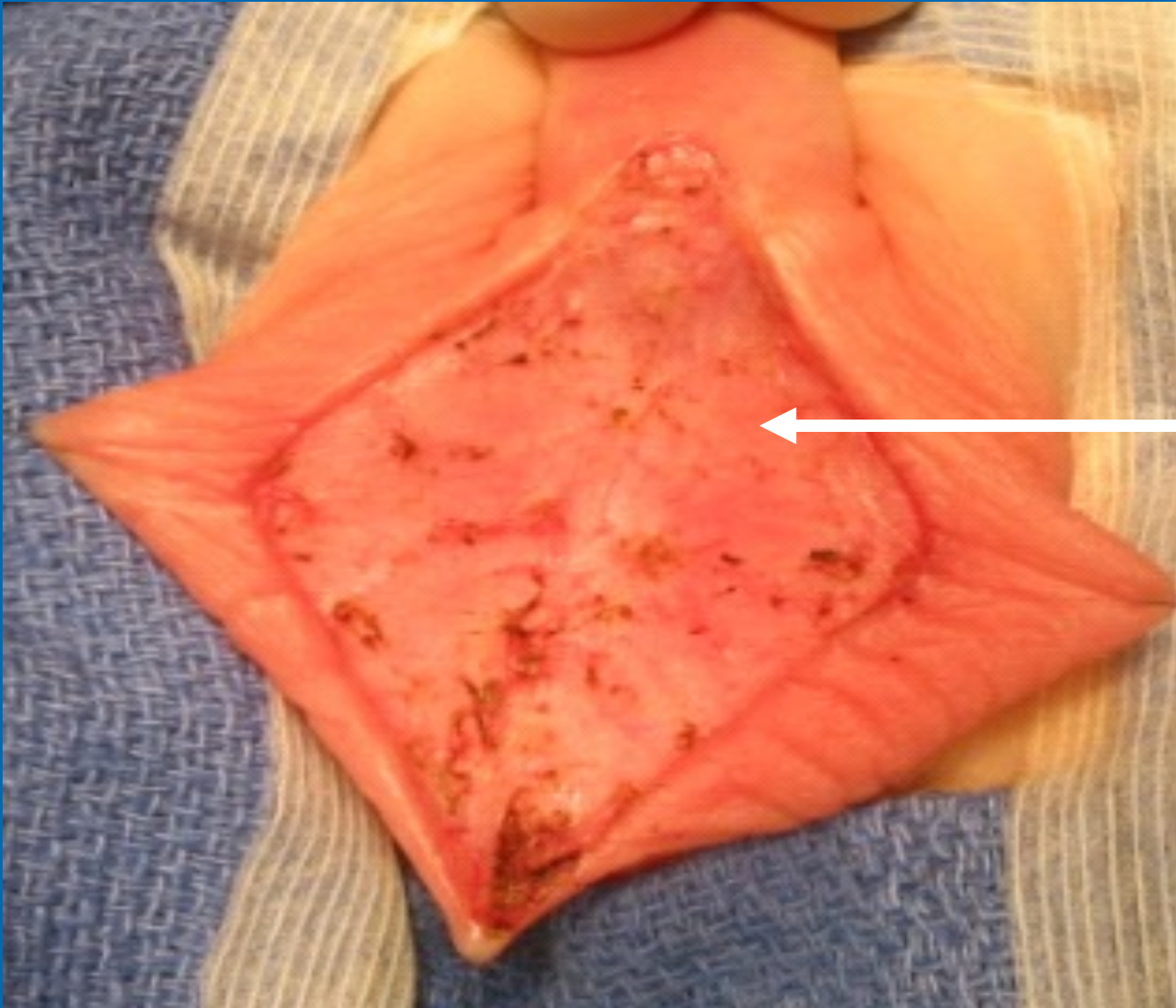




Incision Line



Children's Hospital Colorado
Here, it's different.™



**Abnormal
resected
skin**



Children's Hospital Colorado
Here, it's different.™

INTERNATIONAL CENTER FOR
**COLORECTAL AND
UROGENITAL CARE**

Final Aspect



Children's Hospital Colorado
Here, it's different.™

INTERNATIONAL CENTER FOR
**COLORECTAL AND
UROGENITAL CARE**



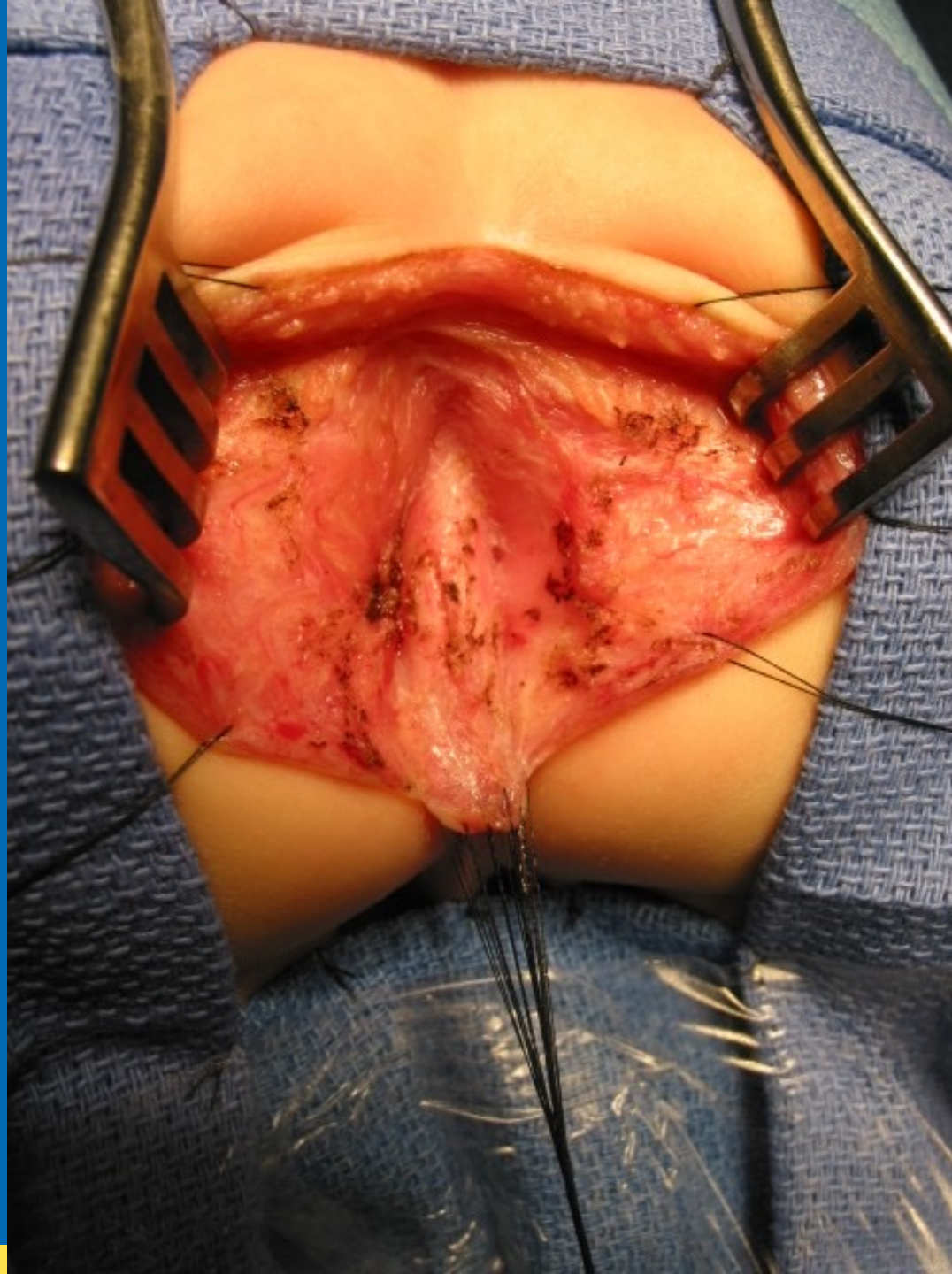
Children's Hospital Colorado
Here, it's different.™

INTERNATIONAL CENTER FOR
**COLORECTAL AND
UROGENITAL CARE**



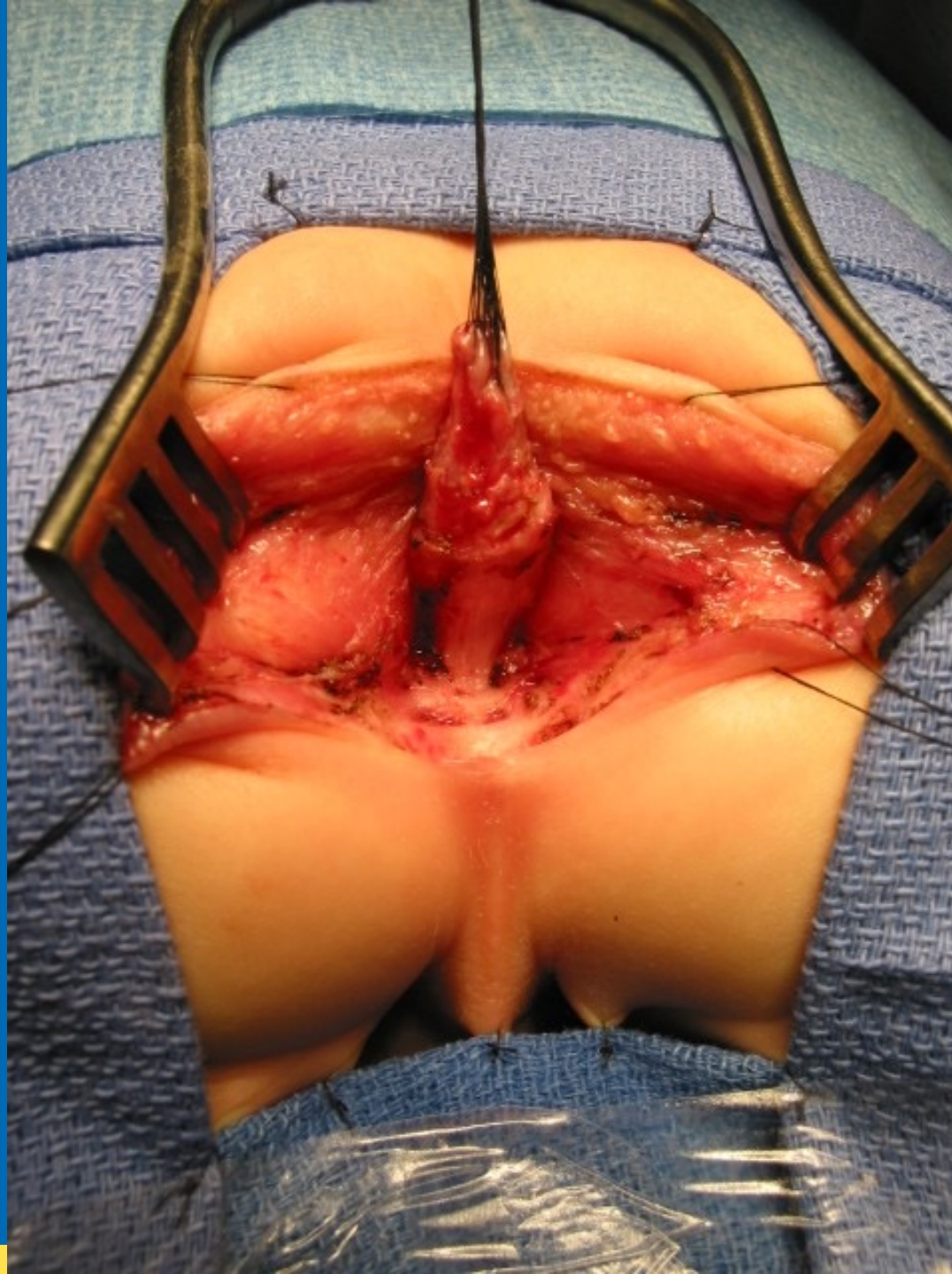
Children's Hospital Colorado
Here, it's different.™

INTERNATIONAL CENTER FOR
**COLORECTAL AND
UROGENITAL CARE**



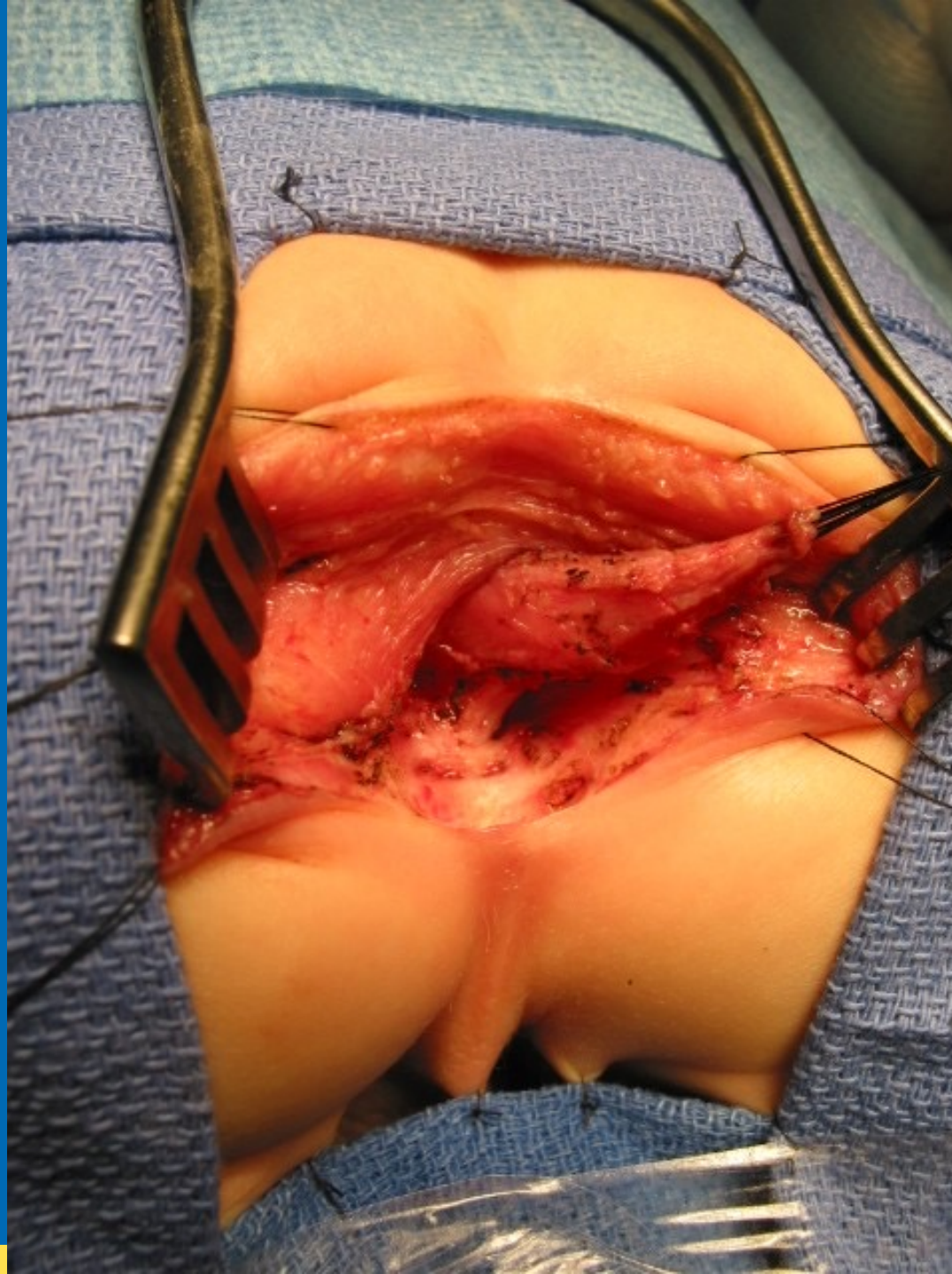
Children's Hospital Colorado
Here, it's different.™

INTERNATIONAL CENTER FOR
**COLORECTAL AND
UROGENITAL CARE**



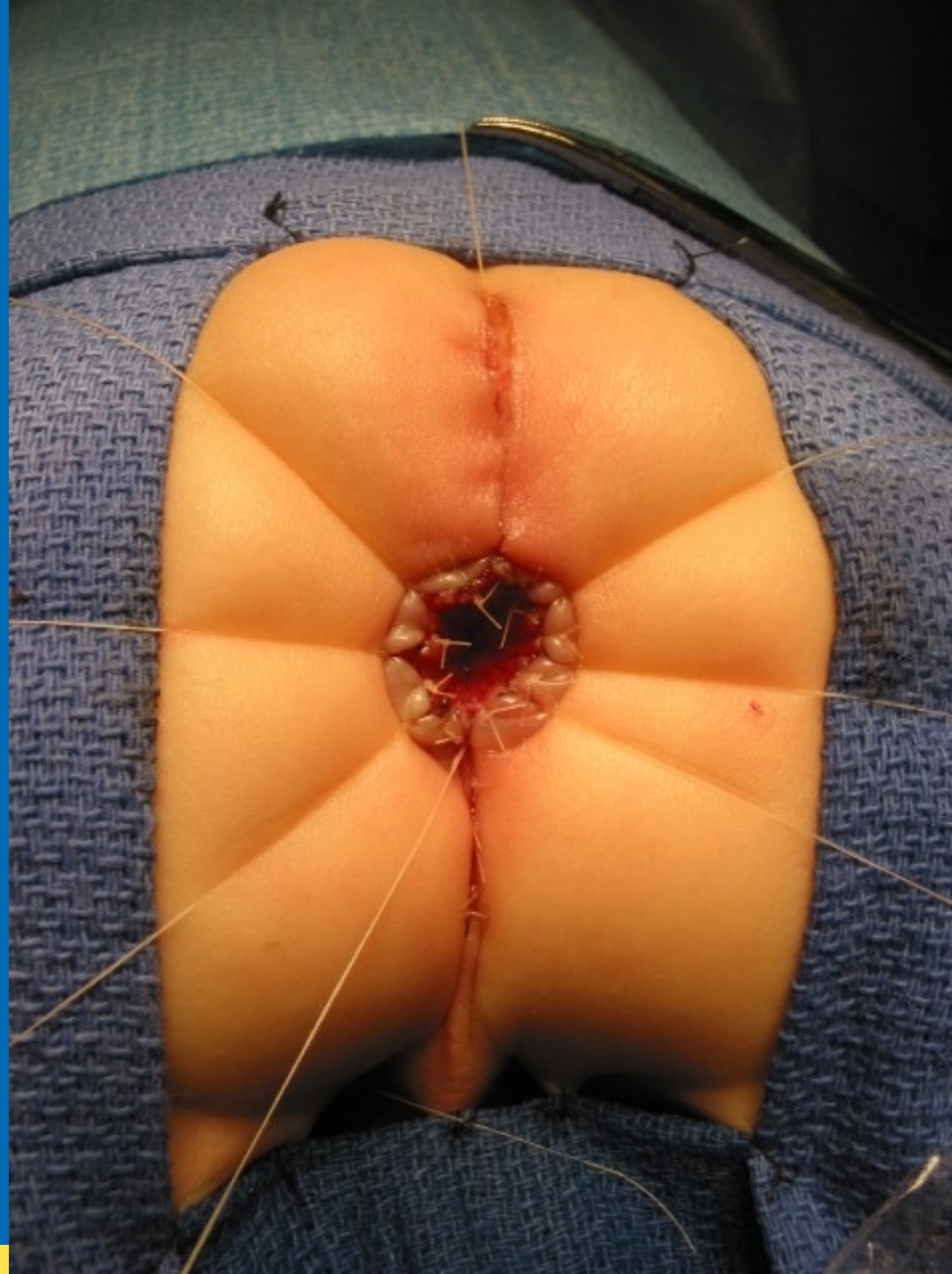
Children's Hospital Colorado
Here, it's different.™

INTERNATIONAL CENTER FOR
**COLORECTAL AND
UROGENITAL CARE**



Children's Hospital Colorado
Here, it's different.™

INTERNATIONAL CENTER FOR
**COLORECTAL AND
UROGENITAL CARE**



Children's Hospital Colorado
Here, it's different.™

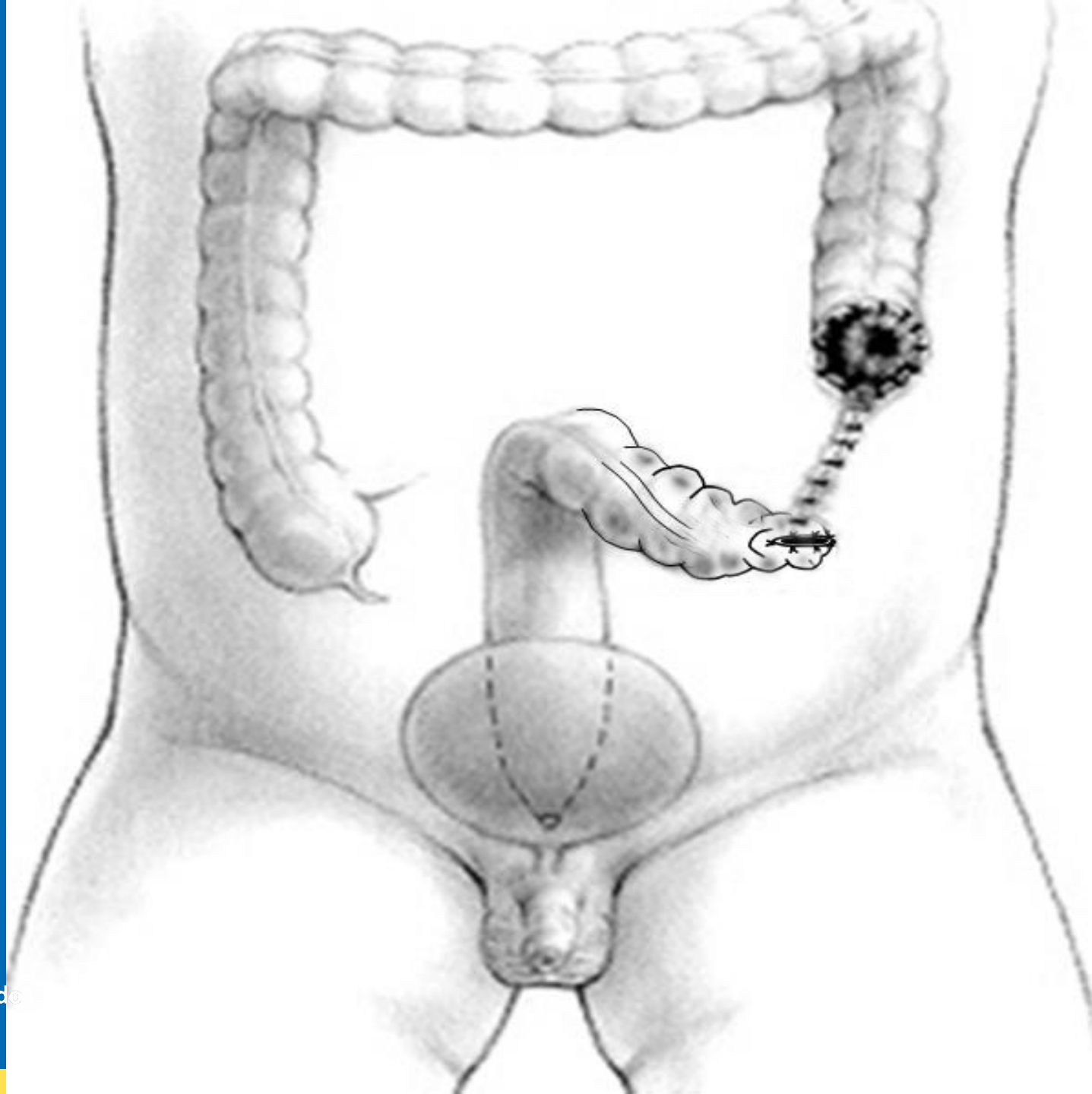
INTERNATIONAL CENTER FOR
**COLORECTAL AND
UROGENITAL CARE**

Neonatal Management

Which is the type of colostomy recommended in patients with an anorectal malformation?

1. Loop colostomy
2. End colostomy and Hartmann's pouch
3. Sigmoidostomy with mucous fistula
4. Proximal descending colostomy with mucous fistula
5. Distal descending colostomy with mucous fistula





Children's Hospital Colorado
Here, it's different.™

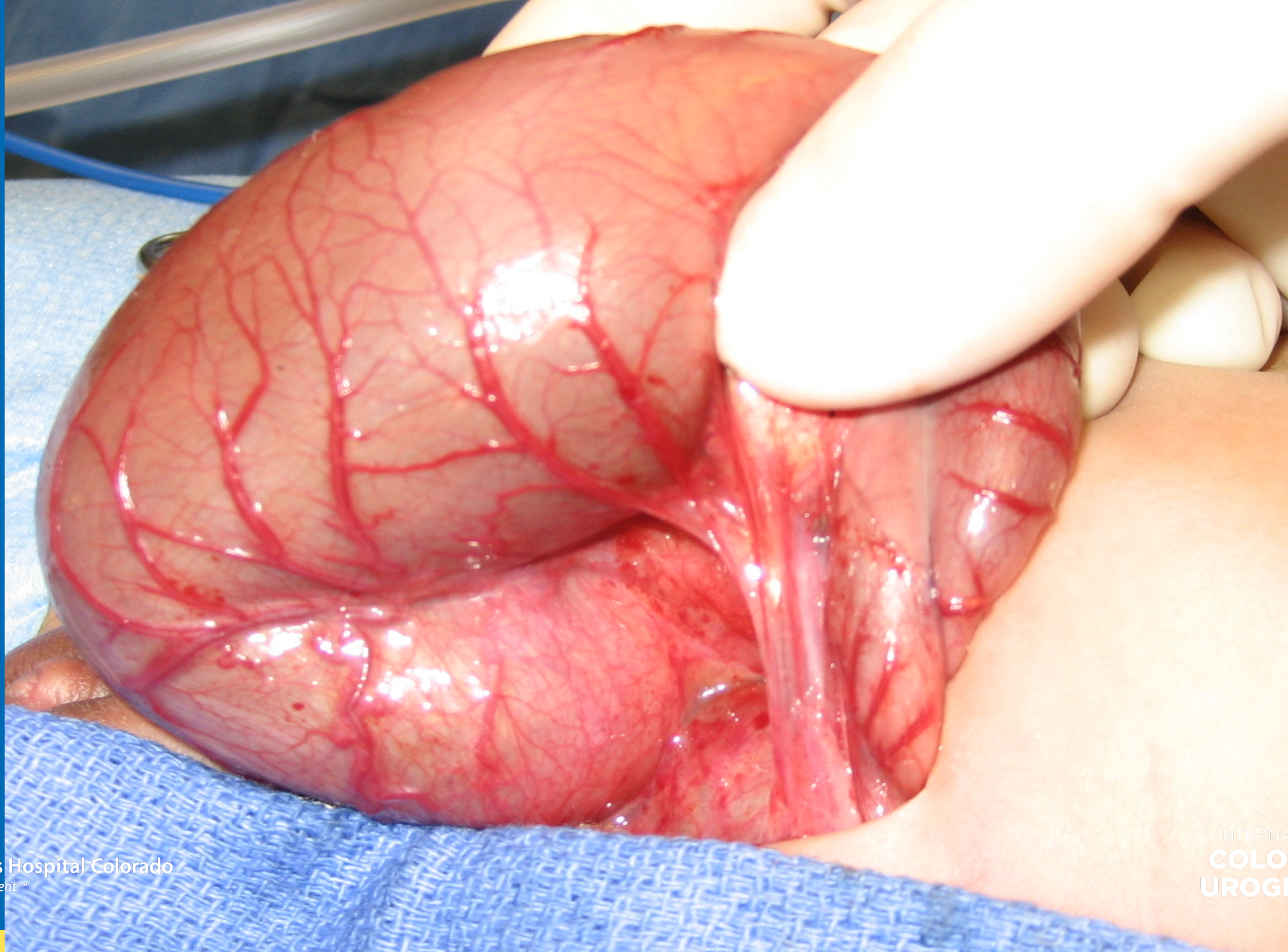
INTERNATIONAL CENTER FOR
**COLORECTAL AND
UROGENITAL CARE**



Children's Hospital Colorado
Here, it's different.™

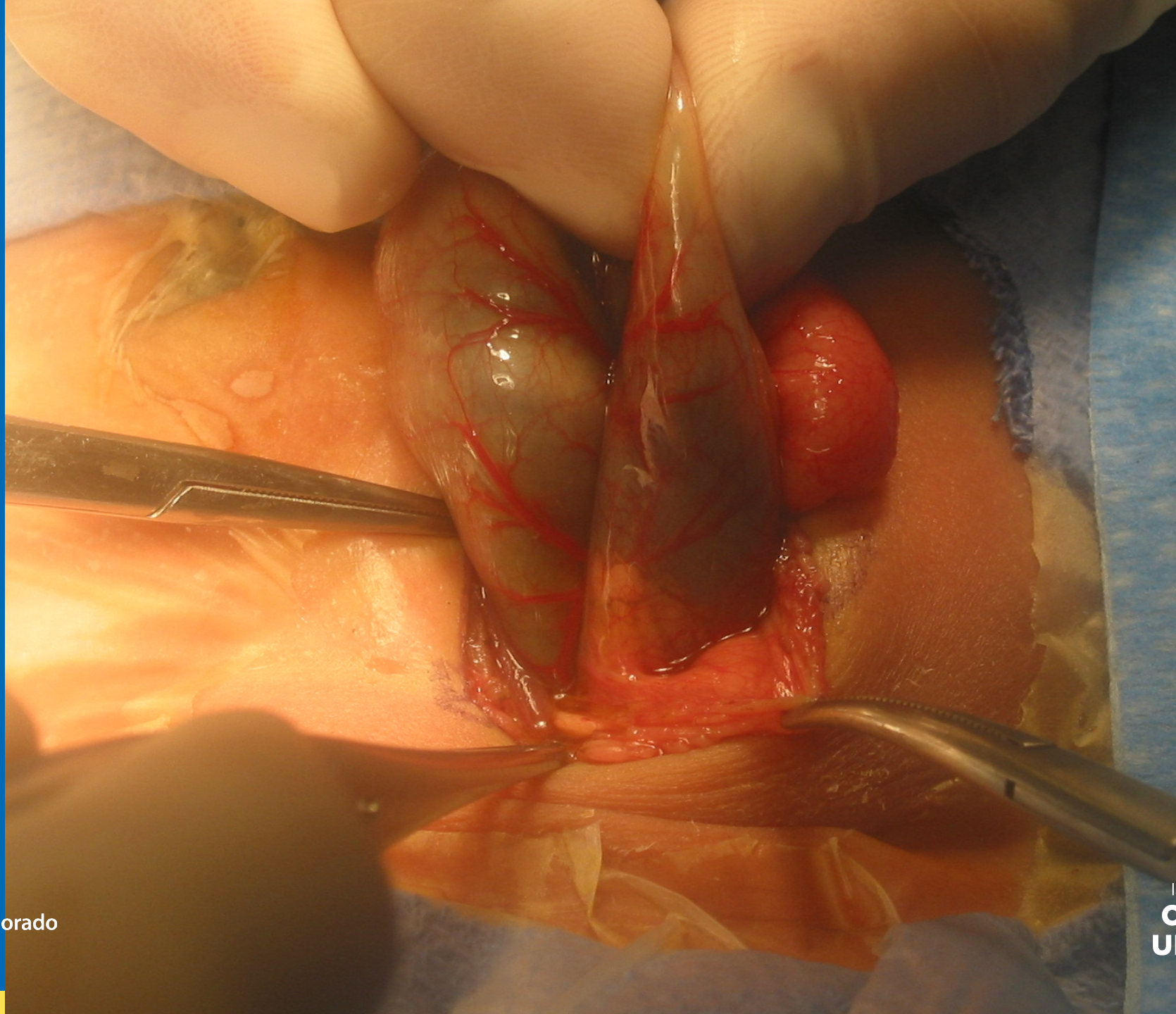


INTERNATIONAL CENTER FOR
**COLORECTAL AND
UROGENITAL CARE**



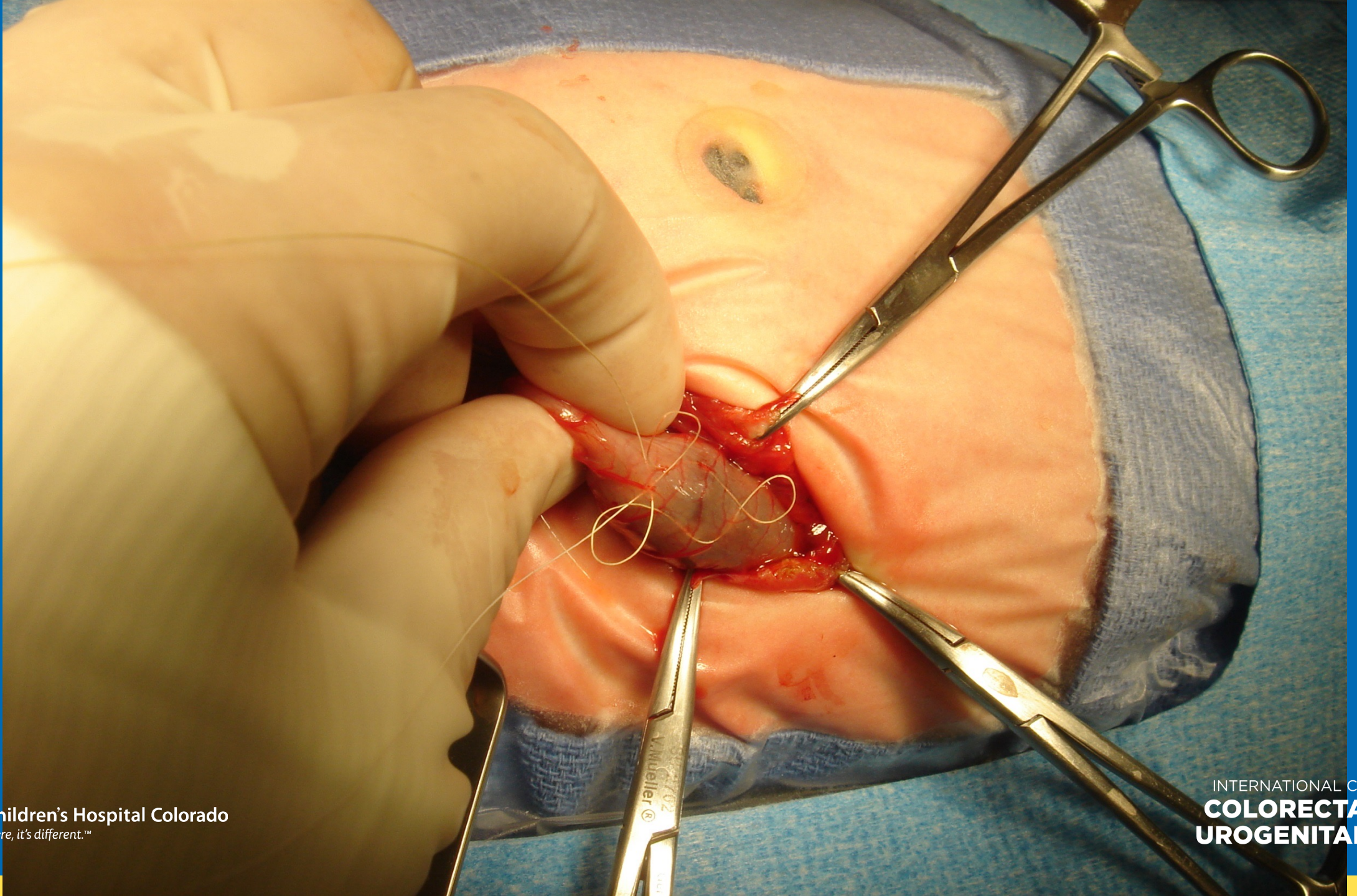
Children's Hospital Colorado
Here, it's different.™

INTERNATIONAL CENTER FOR
**COLORECTAL AND
UROGENITAL CARE**



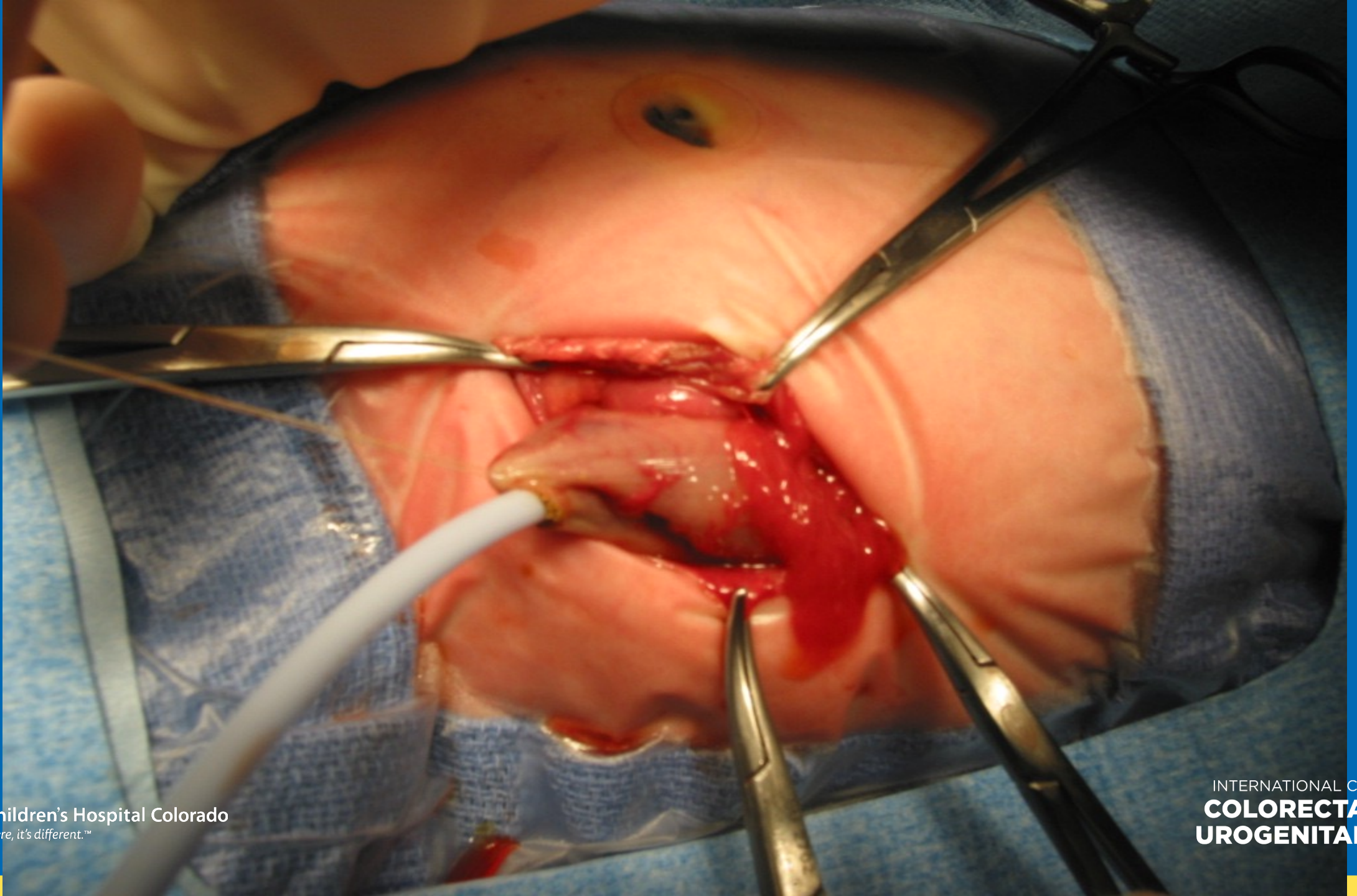
Children's Hospital Colorado
Here, it's different.™

INTERNATIONAL CENTER FOR
**COLORECTAL AND
UROGENITAL CARE**



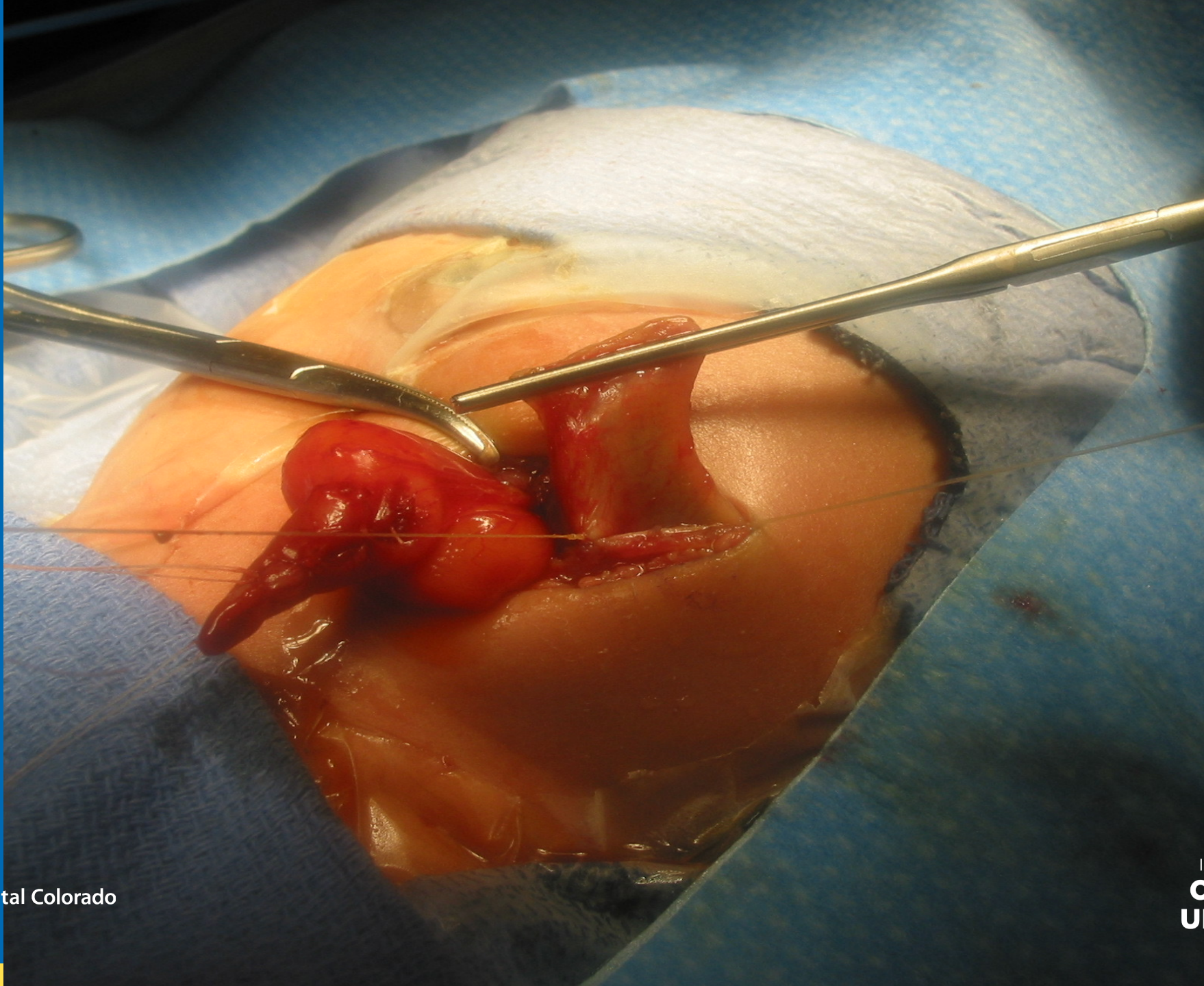
Children's Hospital Colorado
Here, it's different.™

INTERNATIONAL CENTER FOR
**COLORECTAL AND
UROGENITAL CARE**



Children's Hospital Colorado
Here, it's different.™

INTERNATIONAL CENTER FOR
**COLORECTAL AND
UROGENITAL CARE**



Children's Hospital Colorado
Here, it's different.™

INTERNATIONAL CENTER FOR
**COLORECTAL AND
UROGENITAL CARE**



Children's Hospital Colorado
Here, it's different.™

INTERNATIONAL CENTER FOR
**COLORECTAL AND
UROGENITAL CARE**



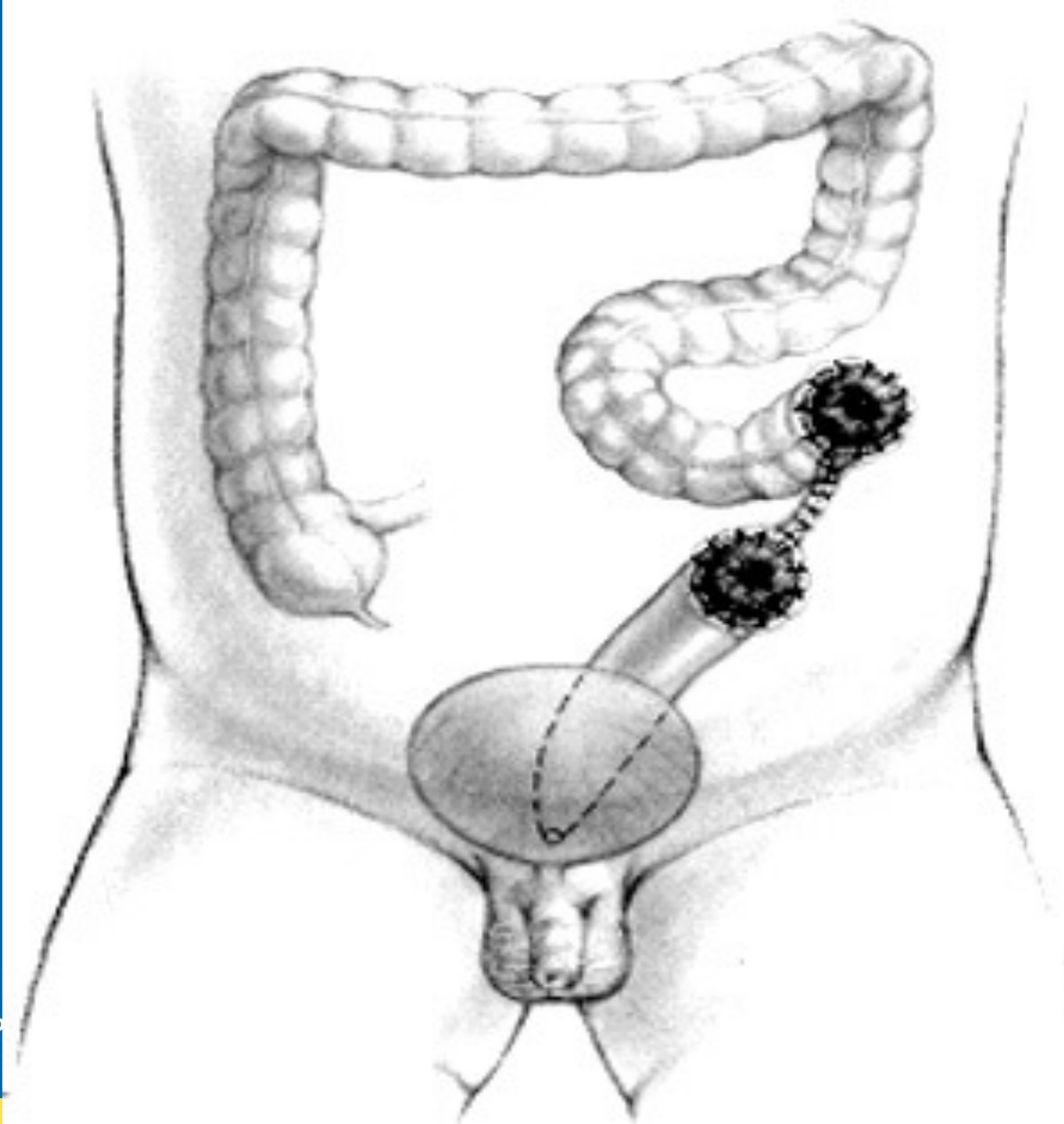
Children's Hospital Colorado
Here, it's different.™

INTERNATIONAL CENTER FOR
**COLORECTAL AND
UROGENITAL CARE**



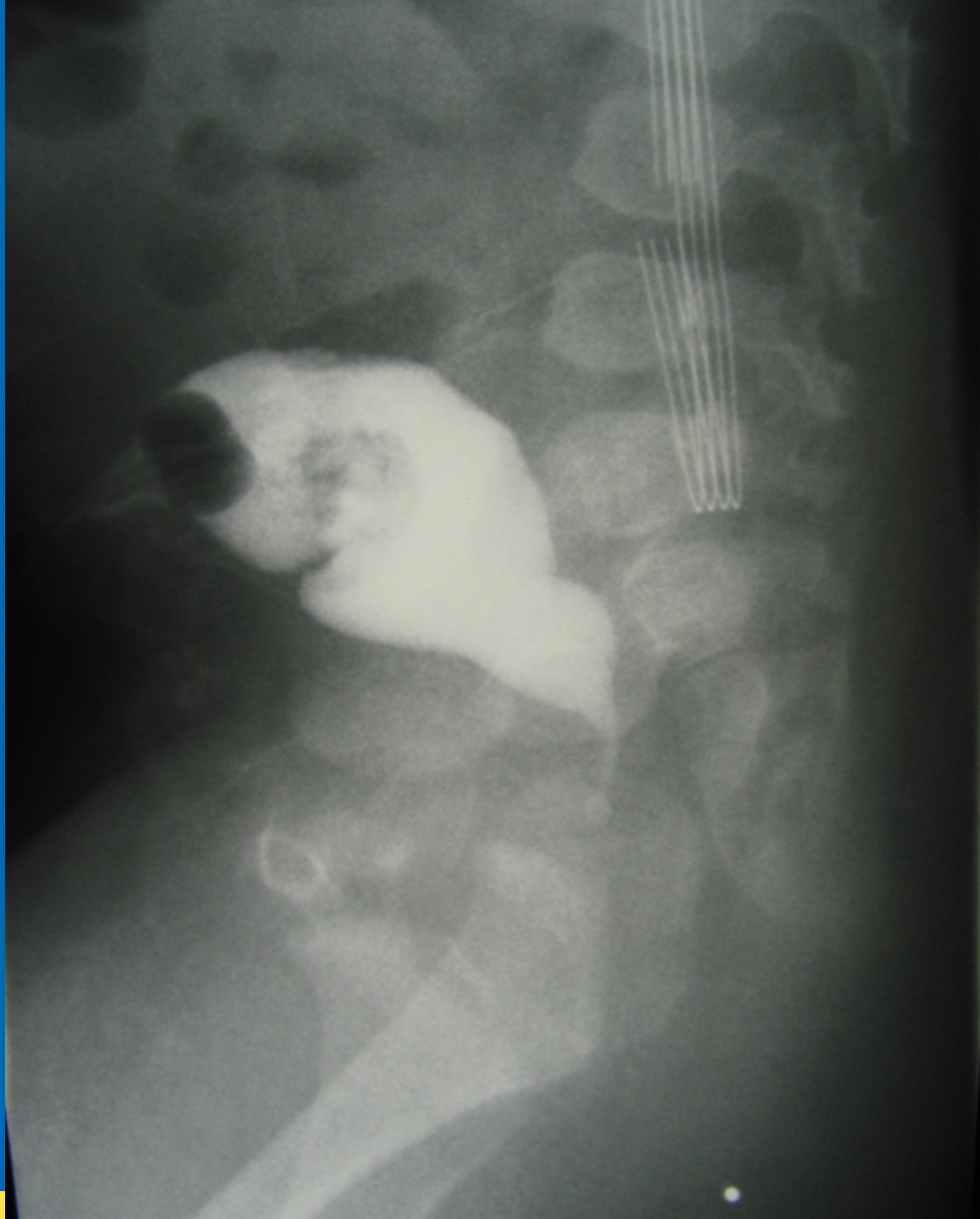
Children's Hospital Colorado
Here, it's different.™

INTERNATIONAL CENTER FOR
**COLORECTAL AND
UROGENITAL CARE**



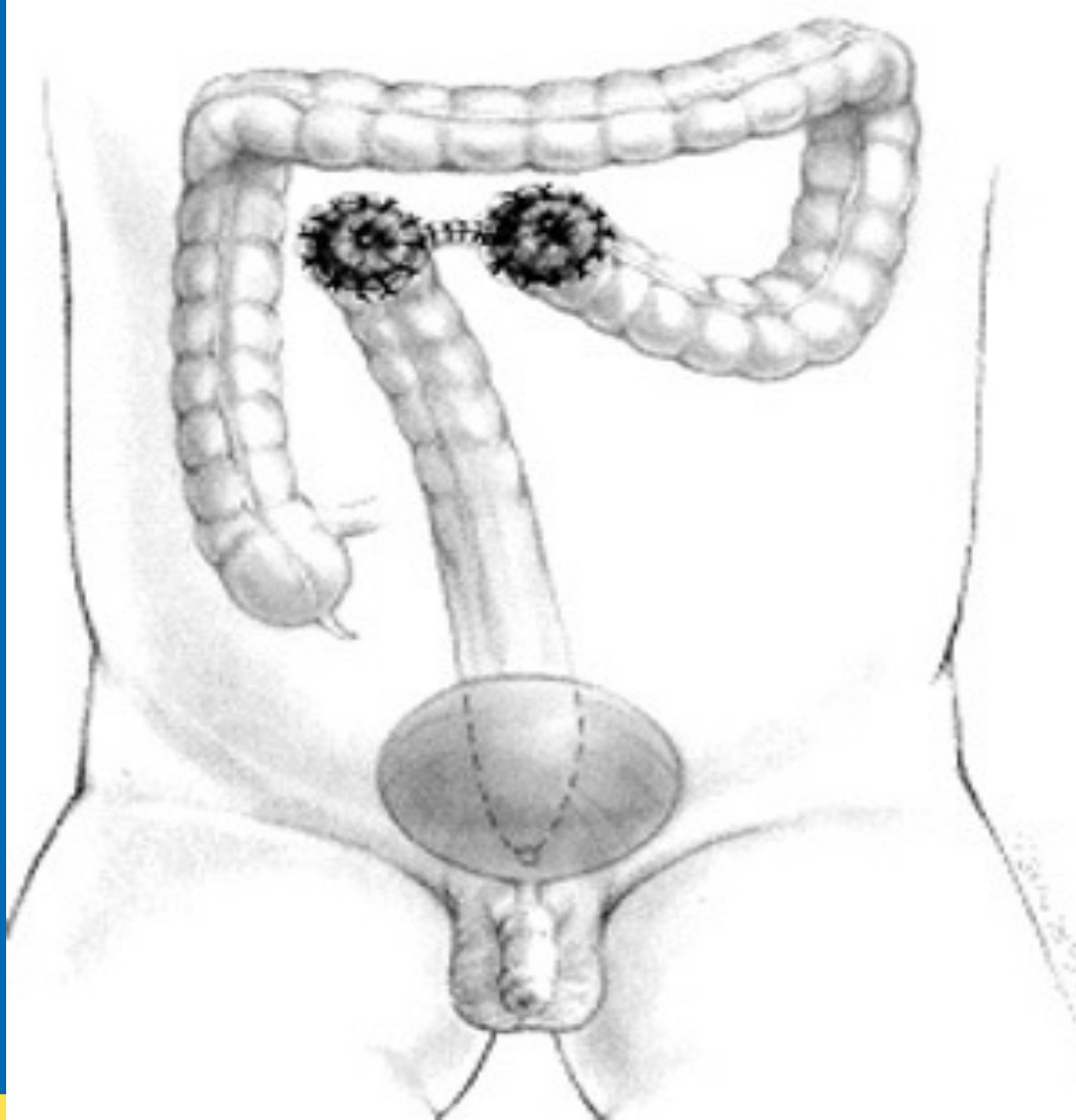
Children's Hospital Colorado
Here, it's different.™

INTERNATIONAL CENTER FOR
**COLORECTAL AND
UROGENITAL CARE**



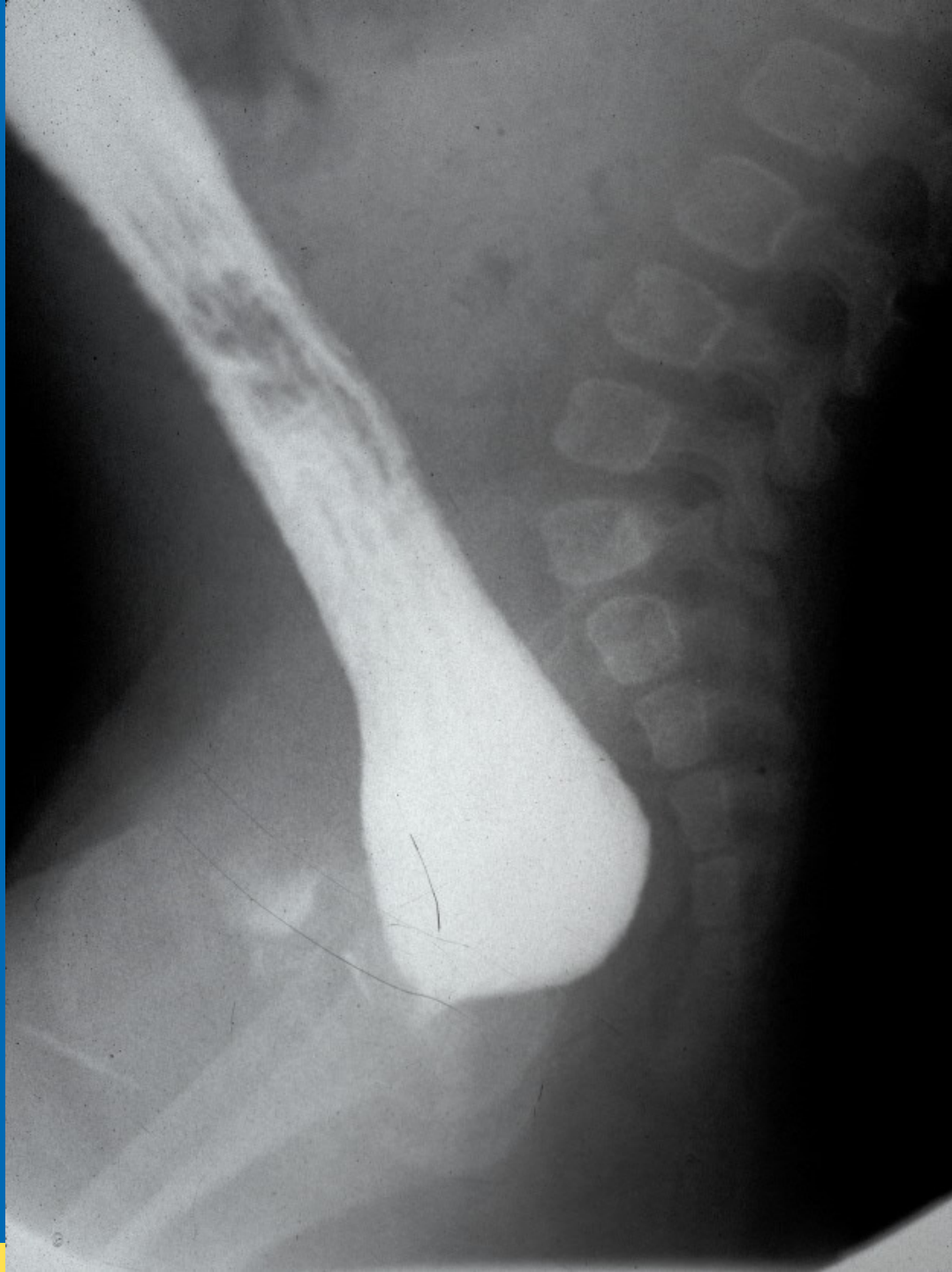
Children's Hospital Colorado
Here, it's different.™

INTERNATIONAL CENTER FOR
**COLORECTAL AND
UROGENITAL CARE**



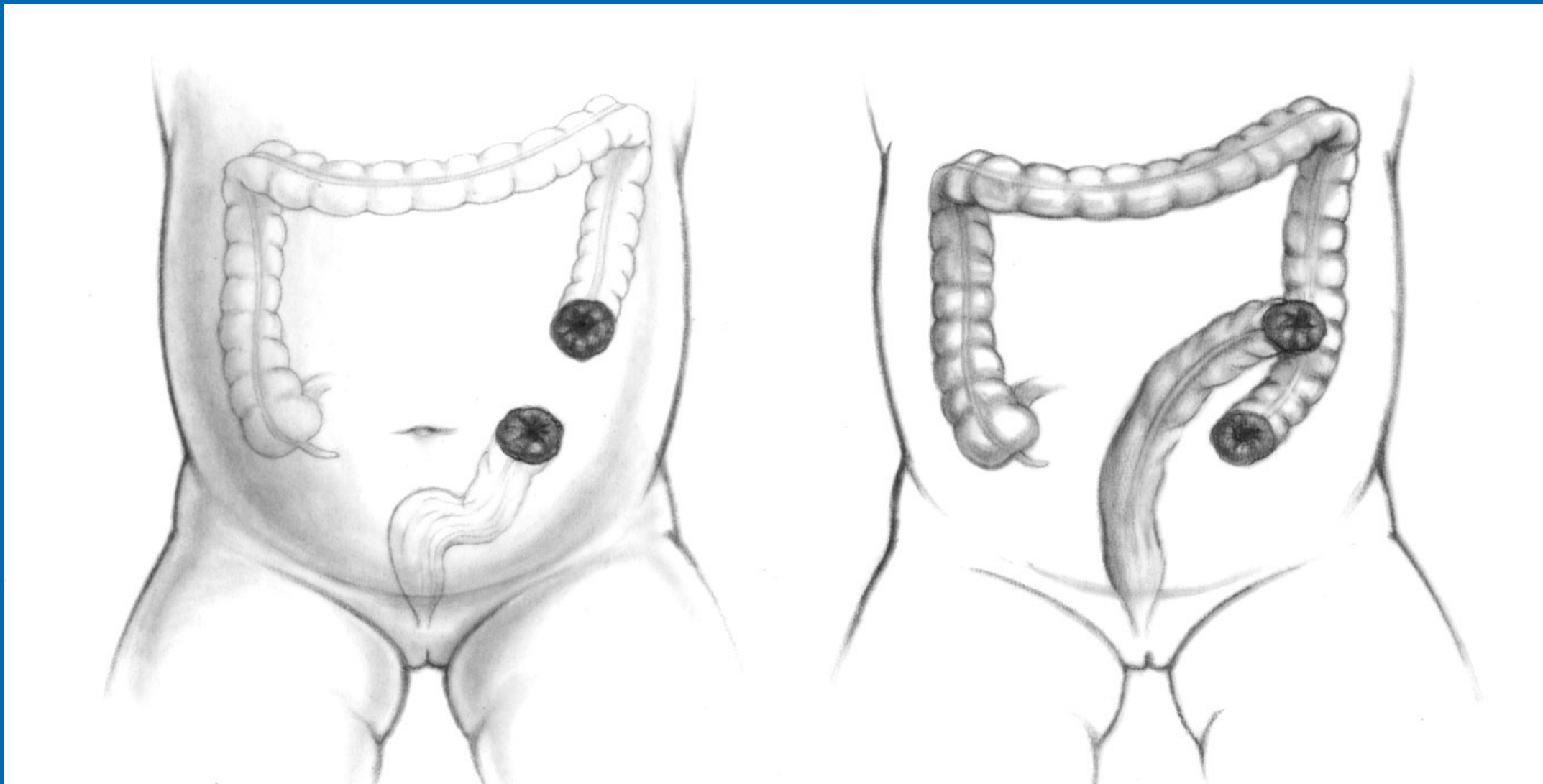
Children's Hospital Colorado
Here, it's different.™

INTERNATIONAL CENTER FOR
**COLORECTAL AND
UROGENITAL CARE**



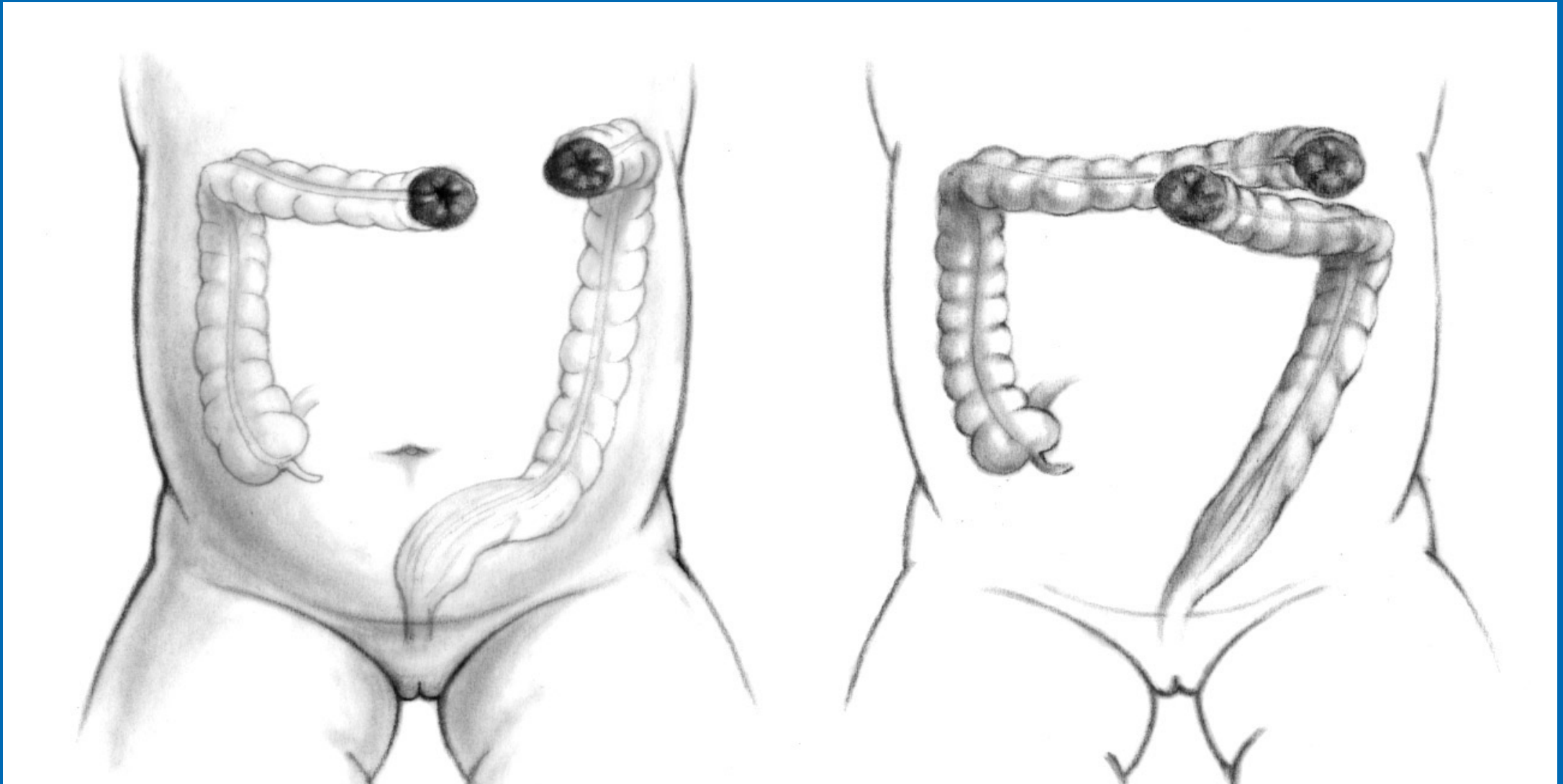
Children's Hospital Colorado
Here, it's different.™

INTERNATIONAL CENTER FOR
**COLORECTAL AND
UROGENITAL CARE**



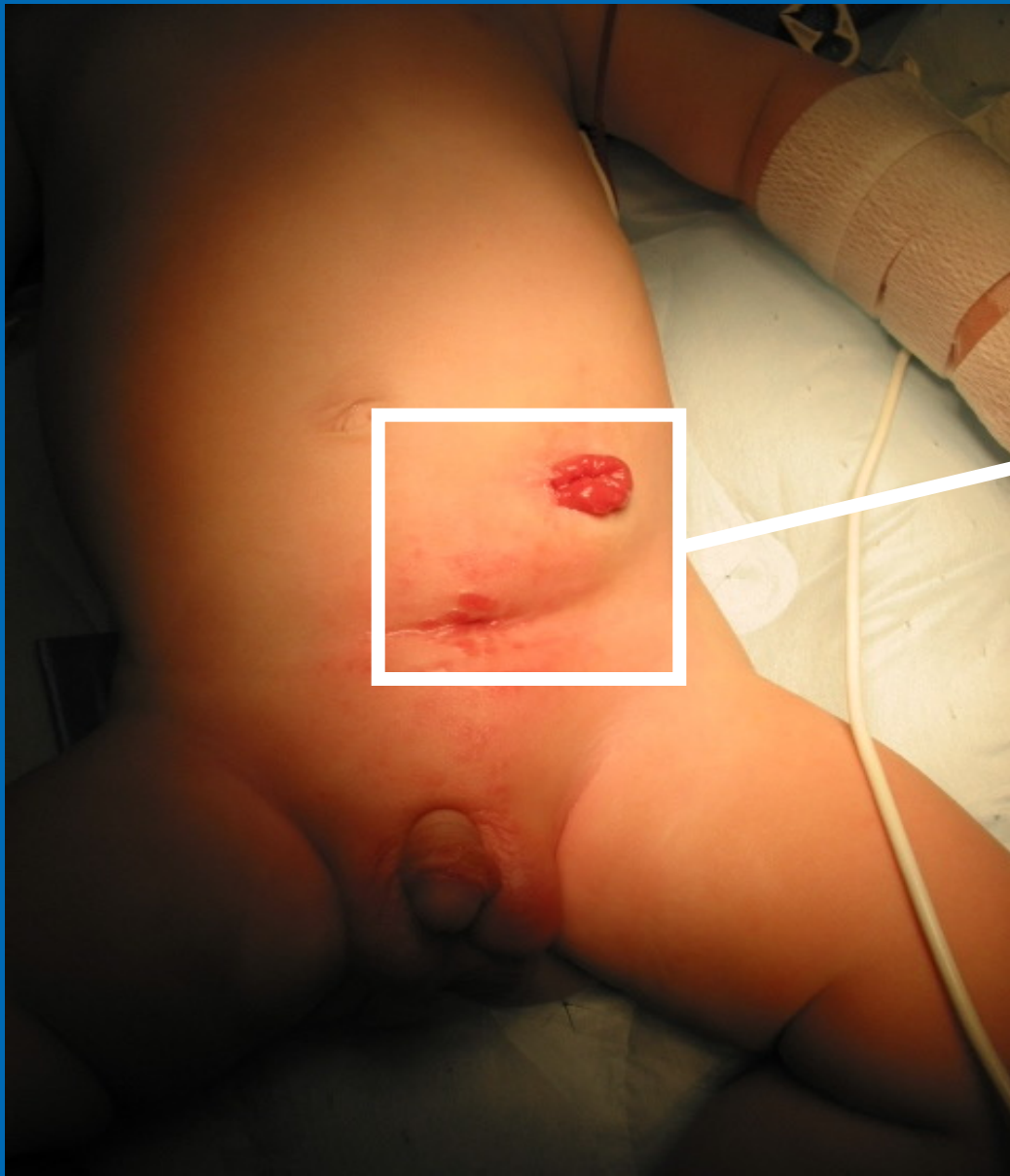
Children's Hospital Colorado
Here, it's different.™

INTERNATIONAL CENTER FOR
**COLORECTAL AND
UROGENITAL CARE**



Children's Hospital Colorado
Here, it's different.™

INTERNATIONAL CENTER FOR
**COLORECTAL AND
UROGENITAL CARE**



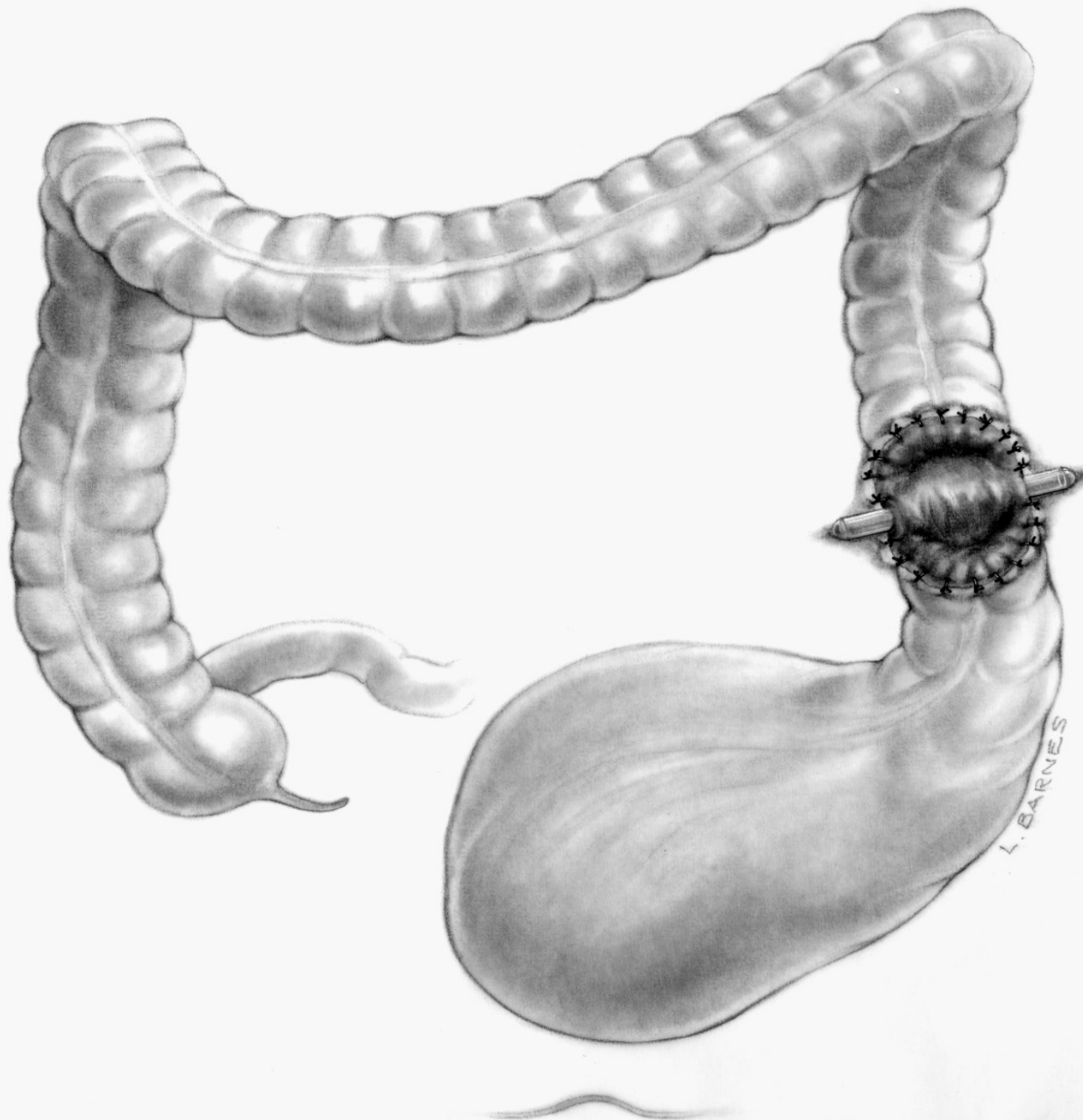
Inverted





Children's Hospital Colorado
Here, it's different.™

INTERNATIONAL CENTER FOR
**COLORECTAL AND
UROGENITAL CARE**



Children's Hospital Colorado
Here, it's different.™

INTERNATIONAL CENTER FOR
**COLORECTAL AND
UROGENITAL CARE**



Children's Hospital Colorado
Here, it's different.™

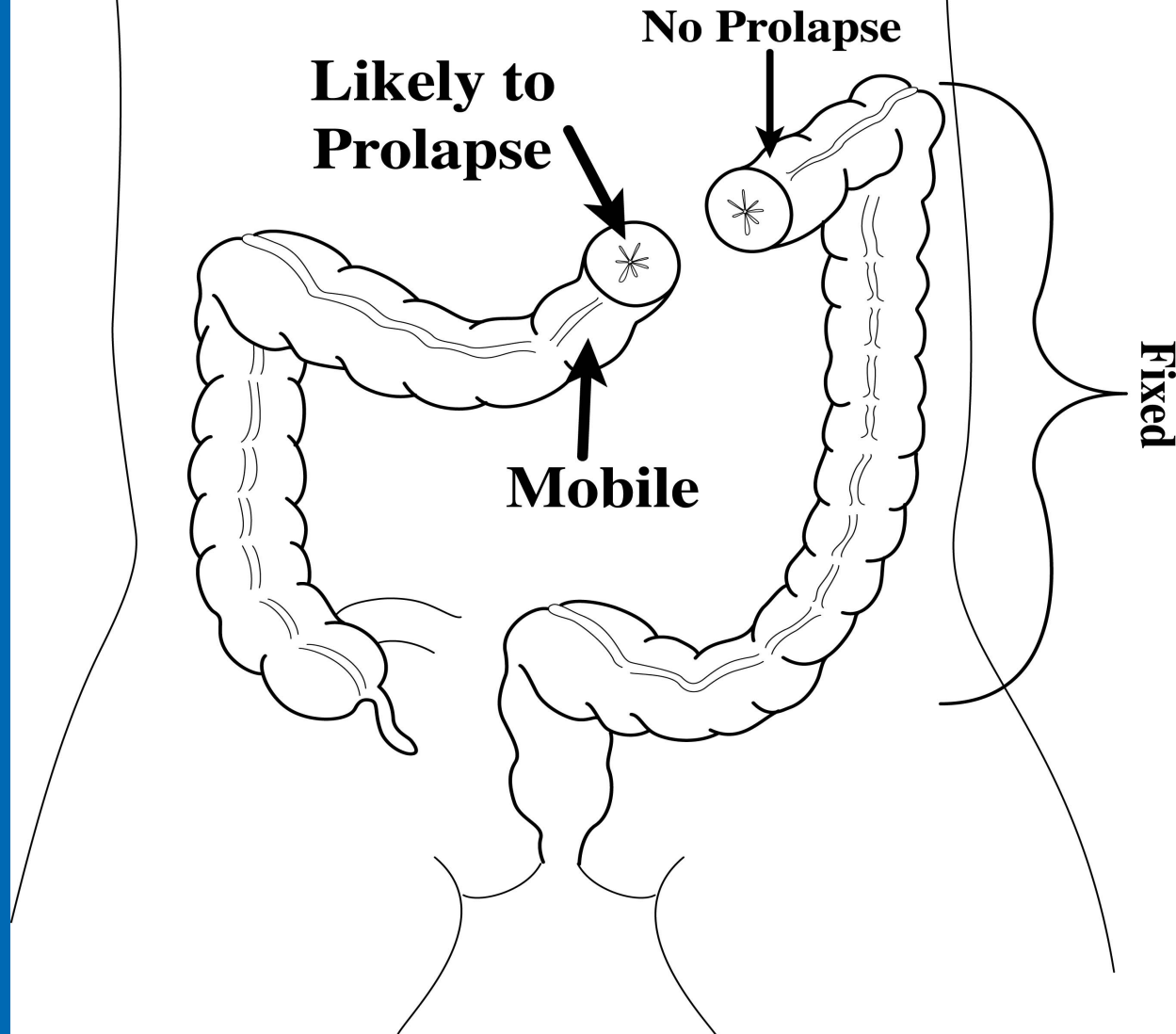
INTERNATIONAL CENTER FOR
**COLORECTAL AND
UROGENITAL CARE**



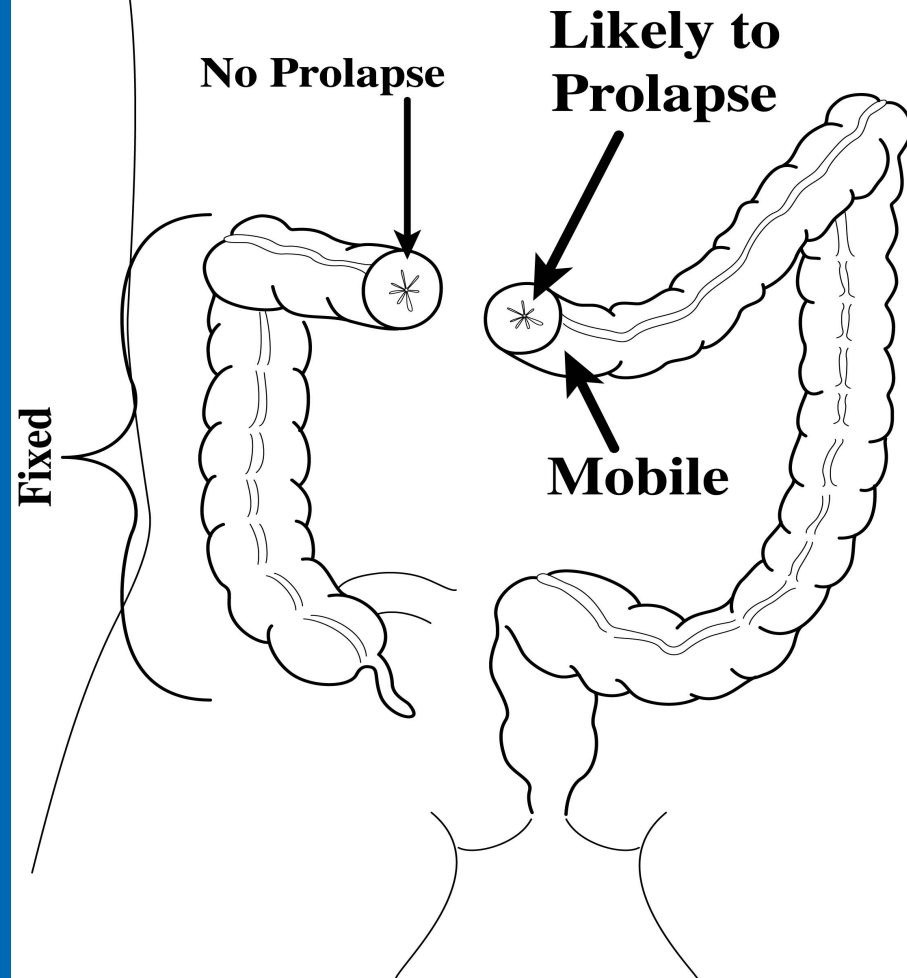
Children's Hospital Colorado
Here, it's different.™

INTERNATIONAL CENTER FOR
**COLORECTAL AND
UROGENITAL CARE**

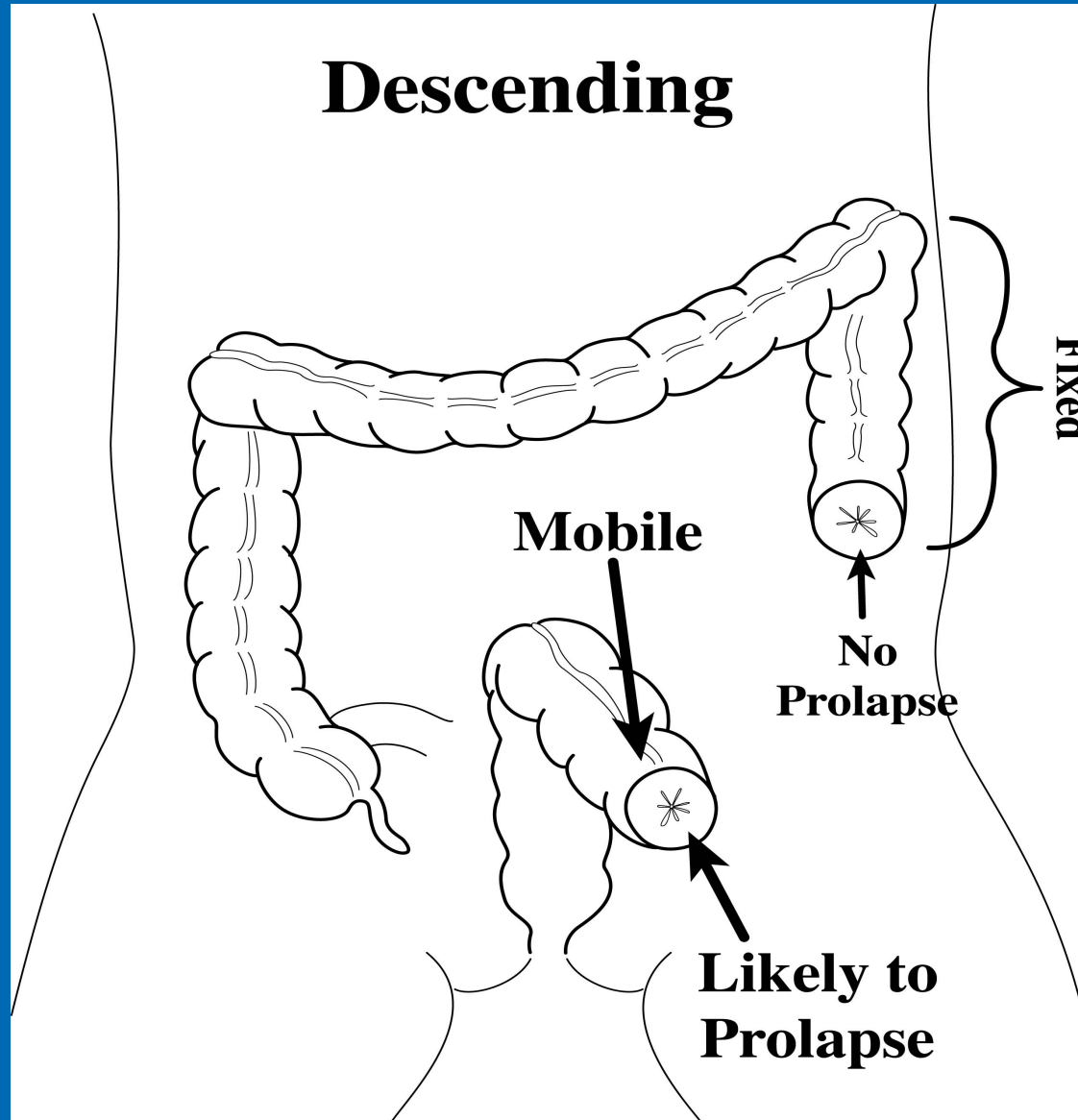
Left Transverse



Right Transverse



Descending





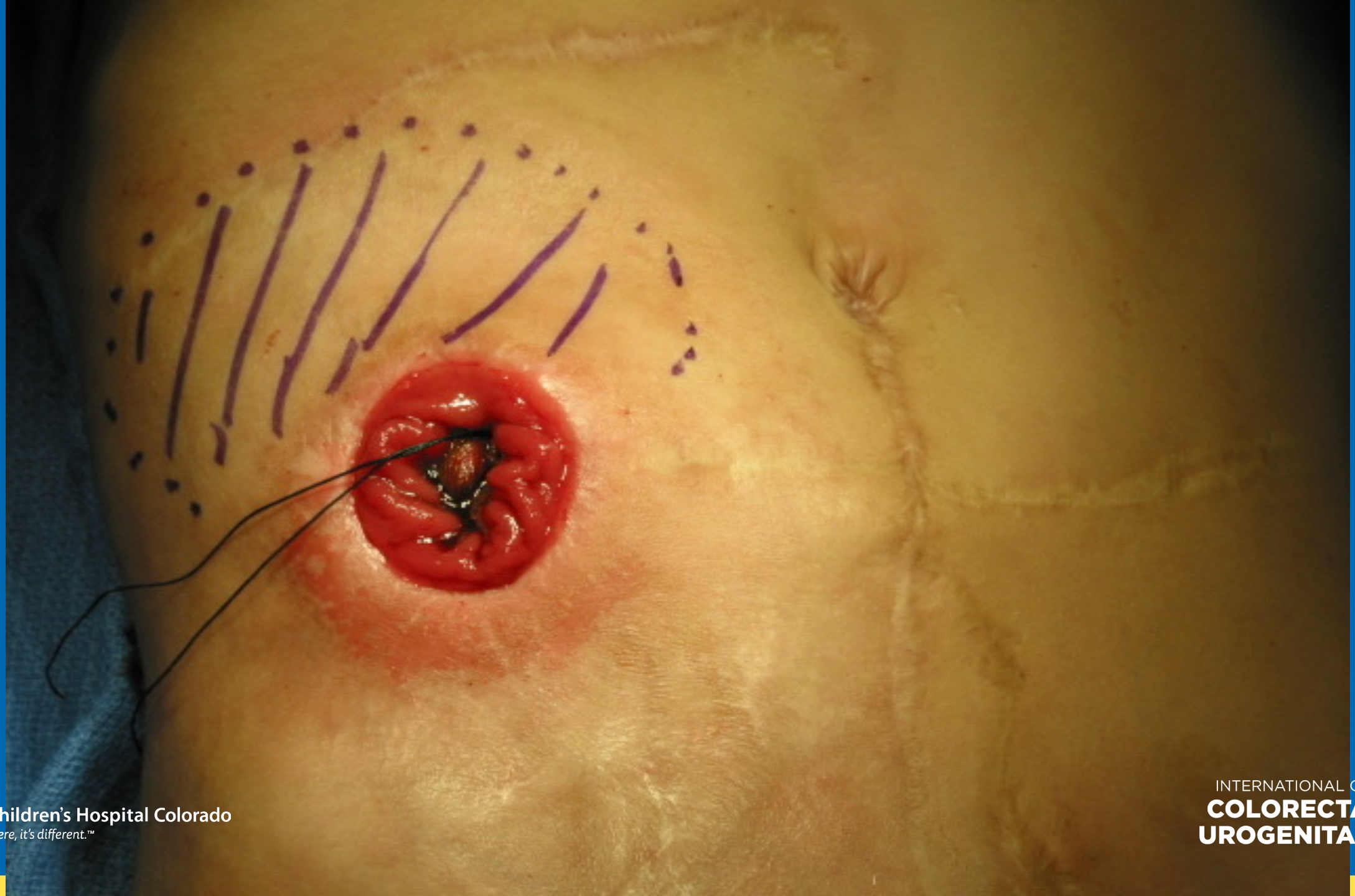
Children's Hospital Colorado
Here, it's different.™

INTERNATIONAL CENTER FOR
**COLORECTAL AND
UROGENITAL CARE**



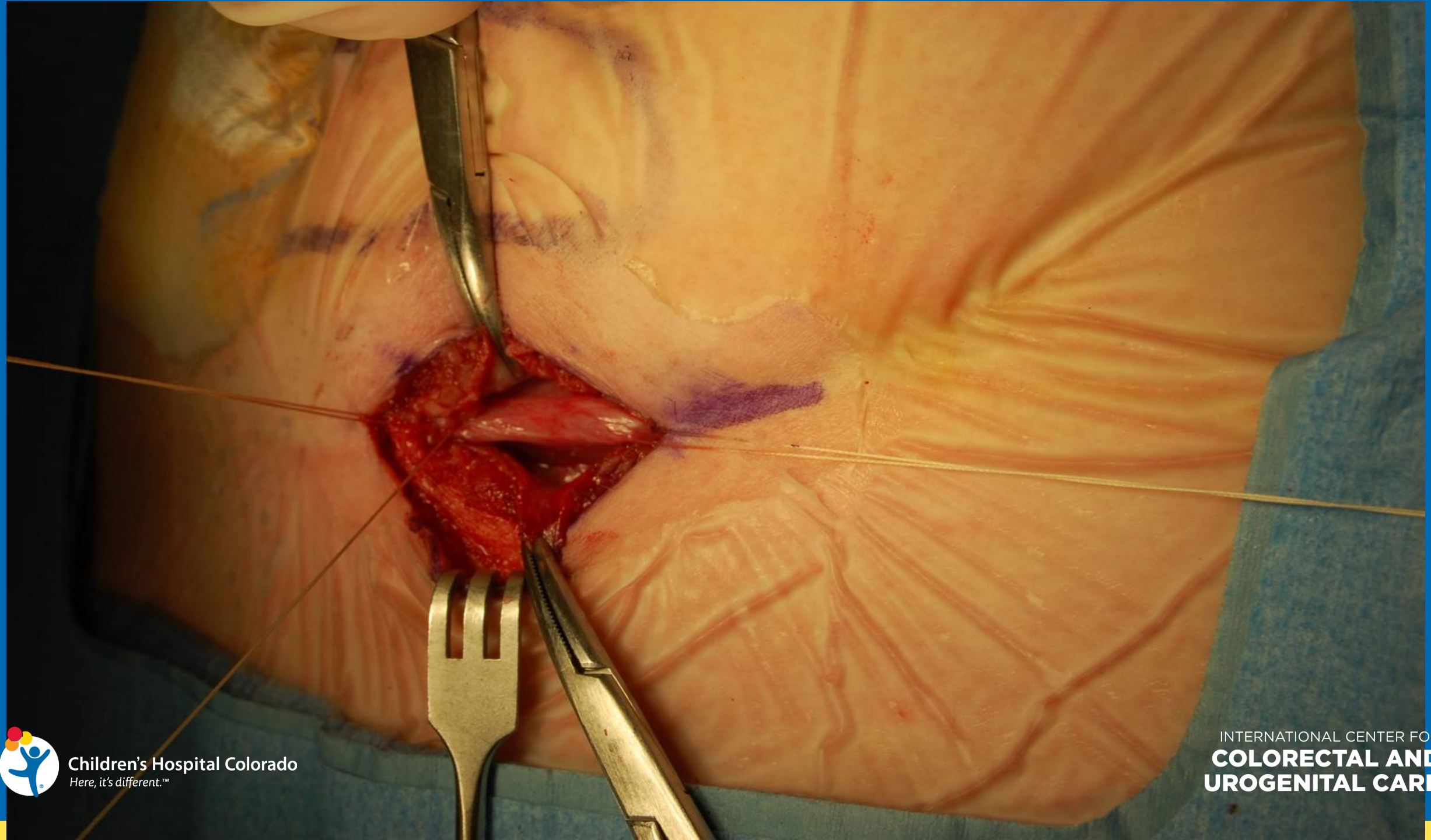
Children's Hospital Colorado
Here, it's different.™

INTERNATIONAL CENTER FOR
**COLORECTAL AND
UROGENITAL CARE**



Children's Hospital Colorado
Here, it's different.™

INTERNATIONAL CENTER FOR
**COLORECTAL AND
UROGENITAL CARE**



Children's Hospital Colorado
Here, it's different.™

INTERNATIONAL CENTER FOR
**COLORECTAL AND
UROGENITAL CARE**



Children's Hospital Colorado
Here, it's different.™

INTERNATIONAL CENTER FOR
**COLORECTAL AND
UROGENITAL CARE**

alberto.pena@cuanschutz.edu

andrea.bischoff@cuanschutz.edu

luis.delatorre@cuanschutz.edu

