

# SURGERY-RADIOLOGY- PATHOLOGY

---

NEONATAL BOWEL OBSTRUCTION

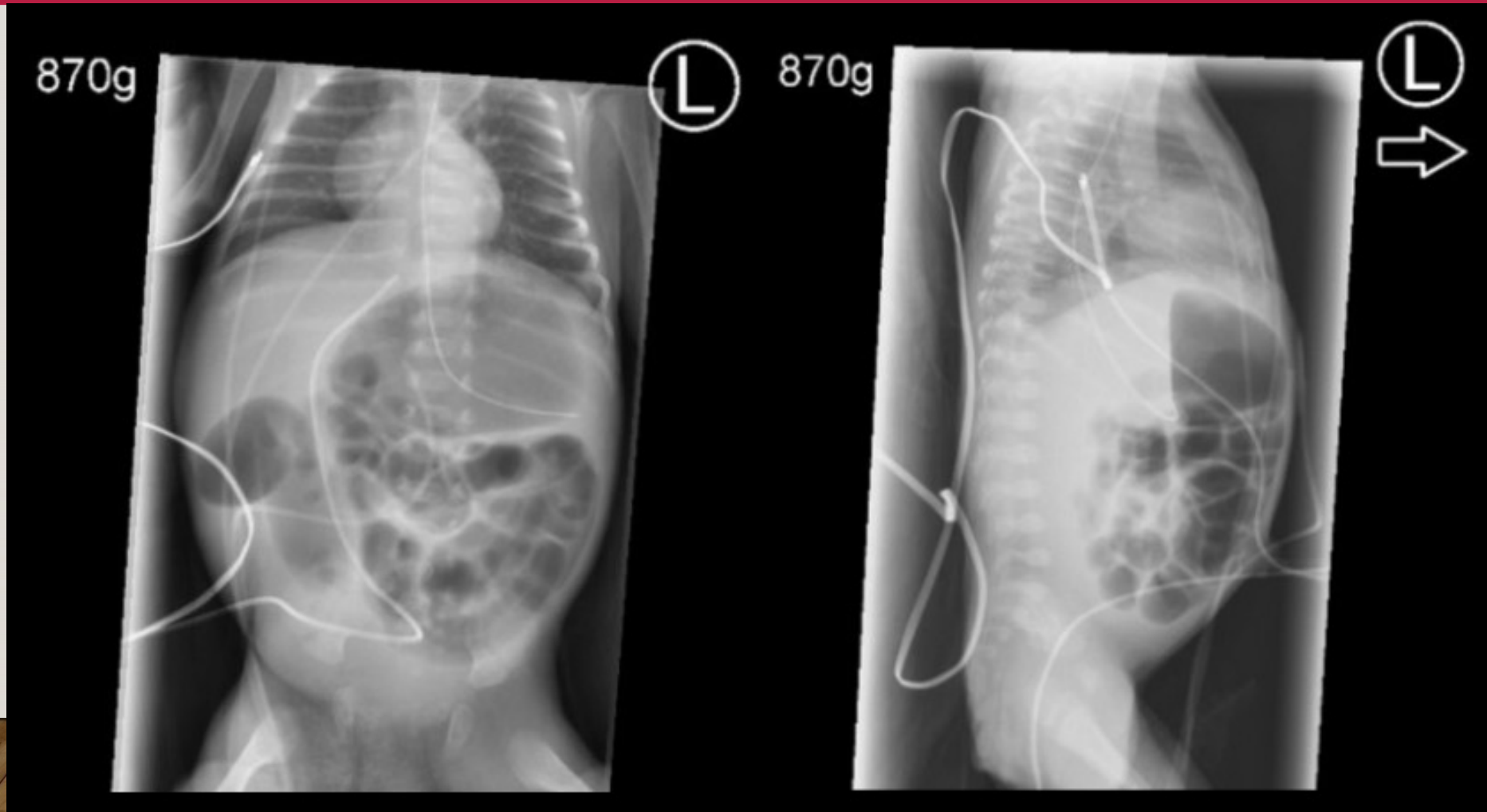
AUGUST 30<sup>TH</sup>, 2023

# CASE #1

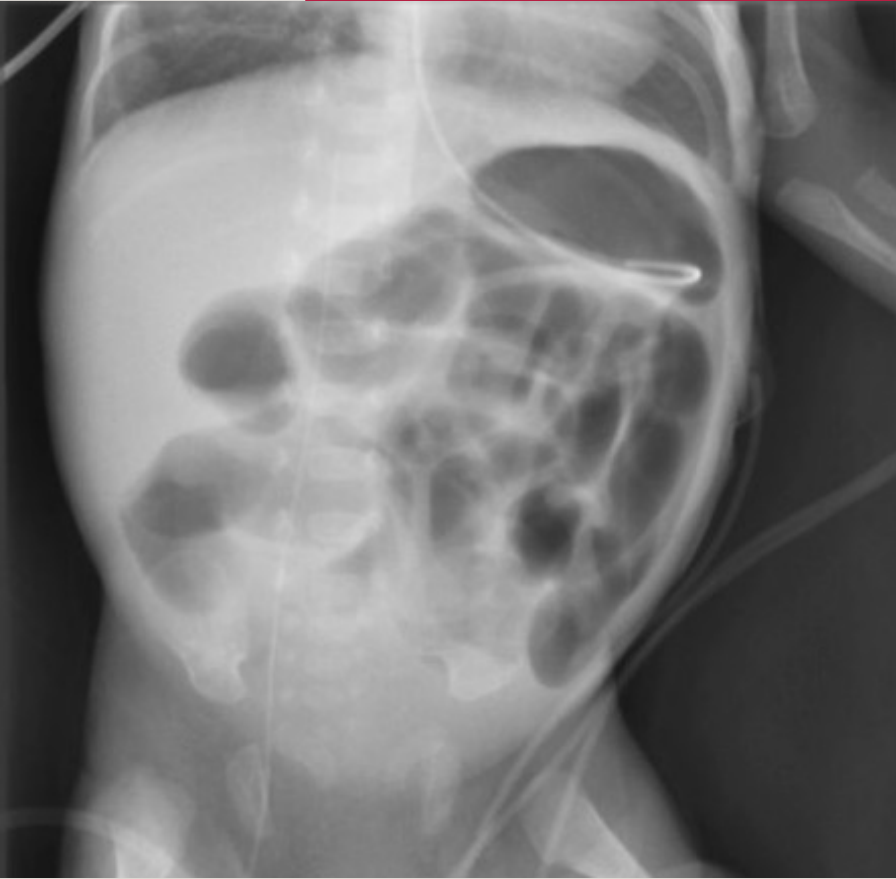
---

- 27week + 3 days Di-di twin female
- Born via emergent C-section for pre-eclampsia
- Mild feeding intolerance and abdominal distension, worsened DOL #24
- NEC 2A diagnosed based on labs and imaging
- Started on IV antibiotics (Pip-Tazo), bowel rest
- Progressive abdominal distension, bilious output from repogle, increased dilation on XR on DOL#33, elected to proceed with surgery

# RADIOLOGY

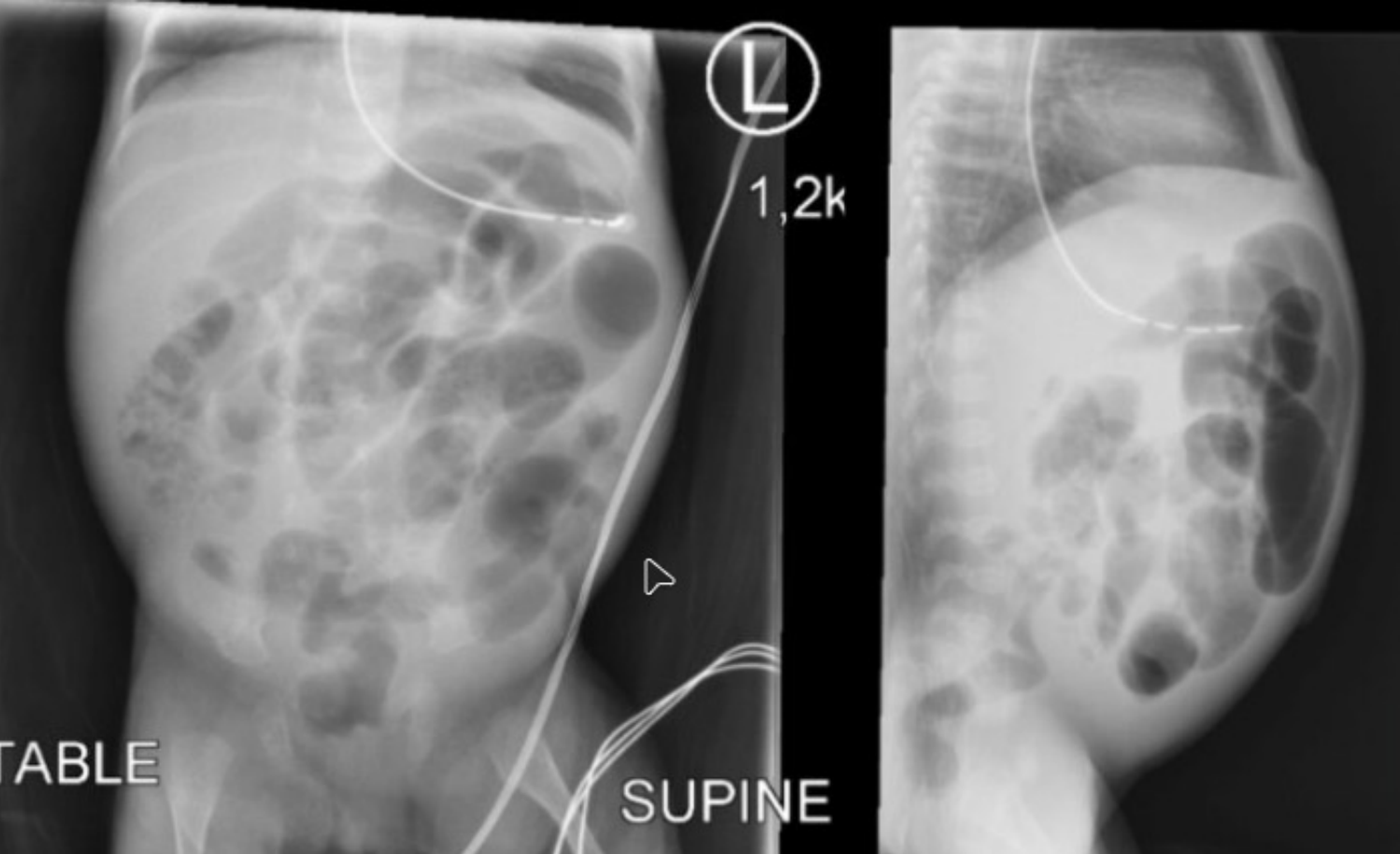


# RADIOLOGY

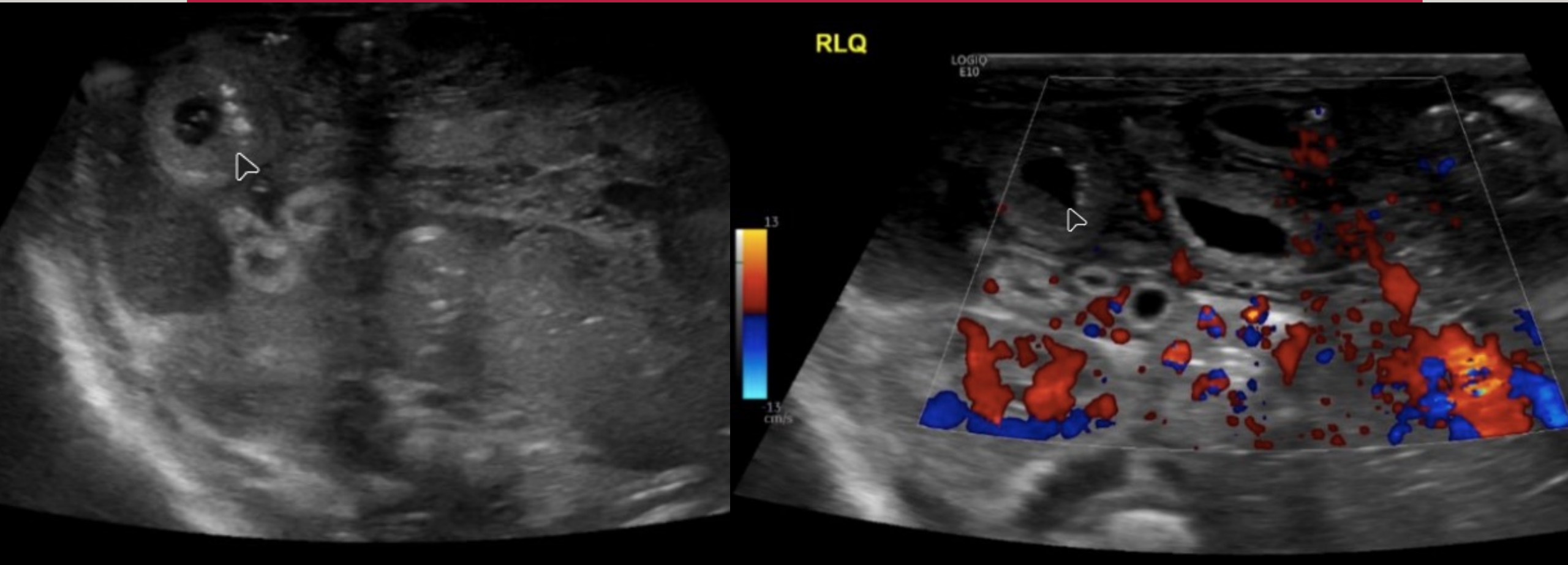




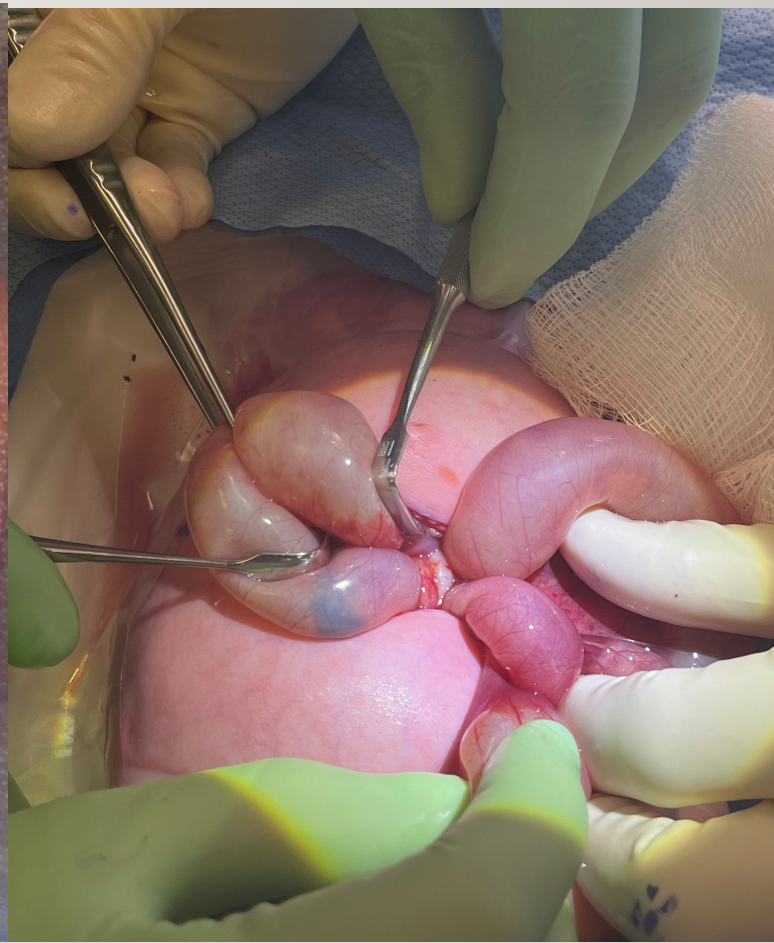
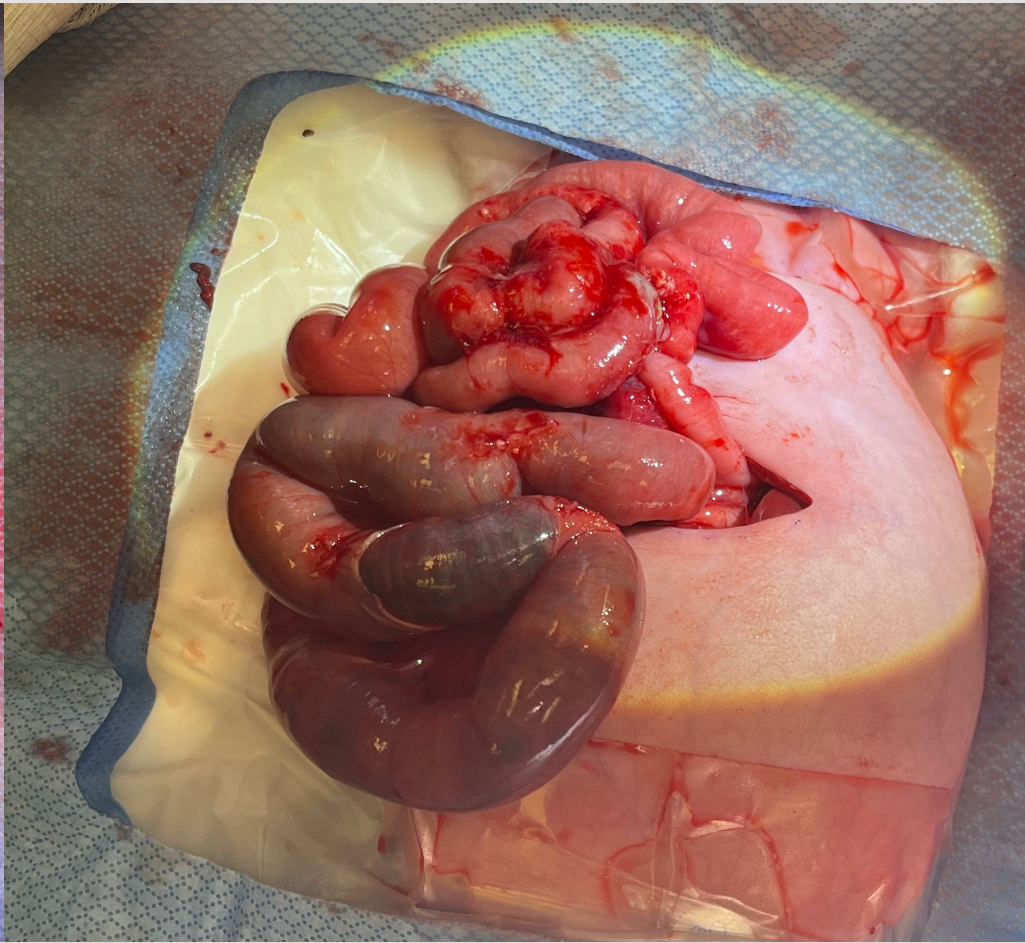
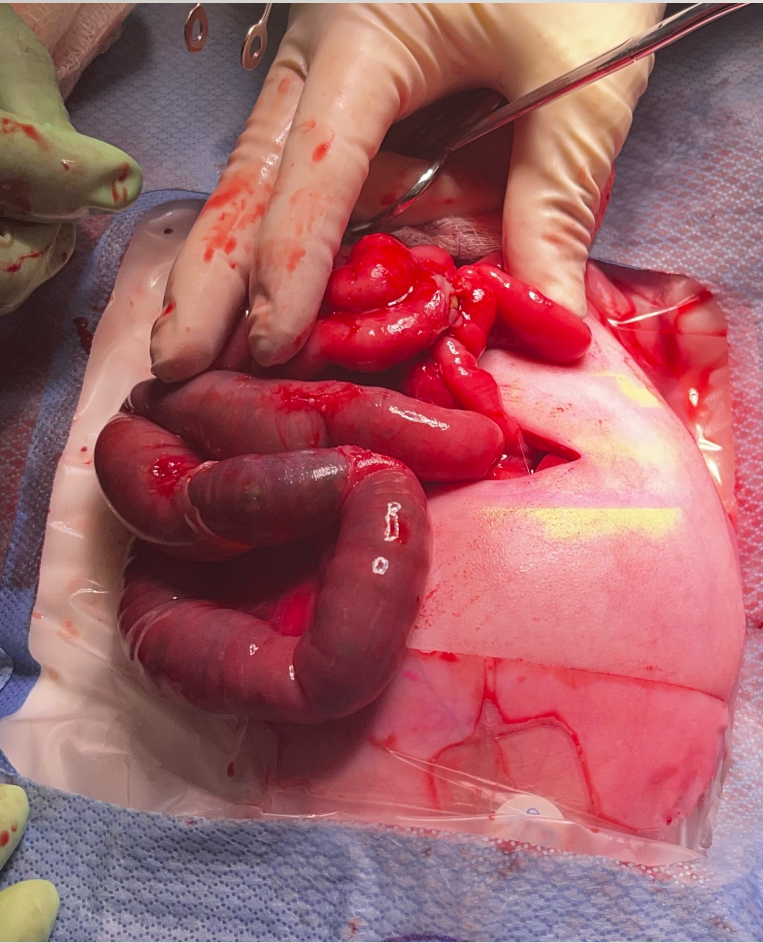
# RADIOLOGY



# RADIOLOGY









# BB DE M.L.

---

- Two perforations within small bowel contained due to adhesions
- 35cm small bowel resected
- Jejunostomy and mucus fistula matured

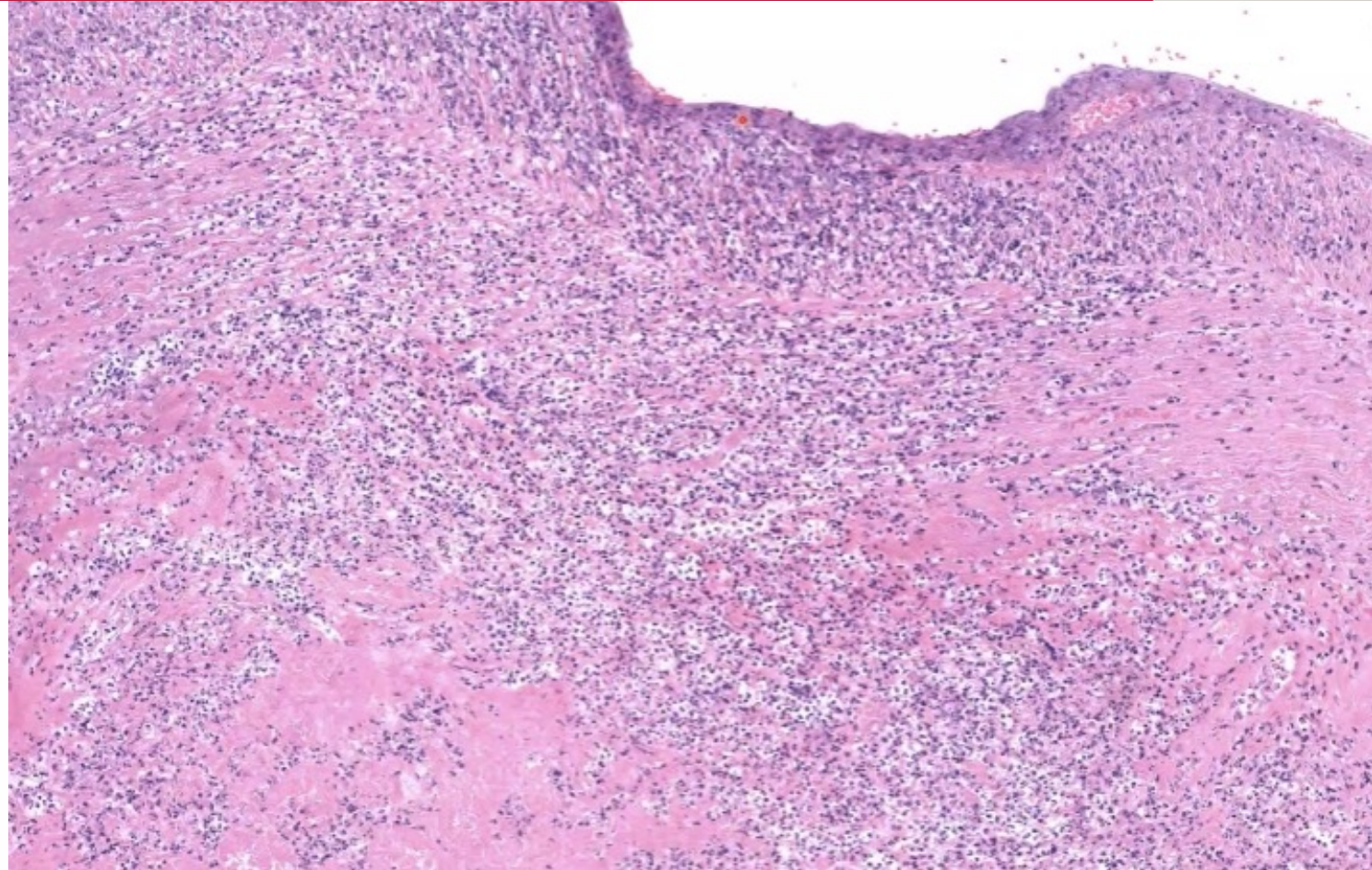
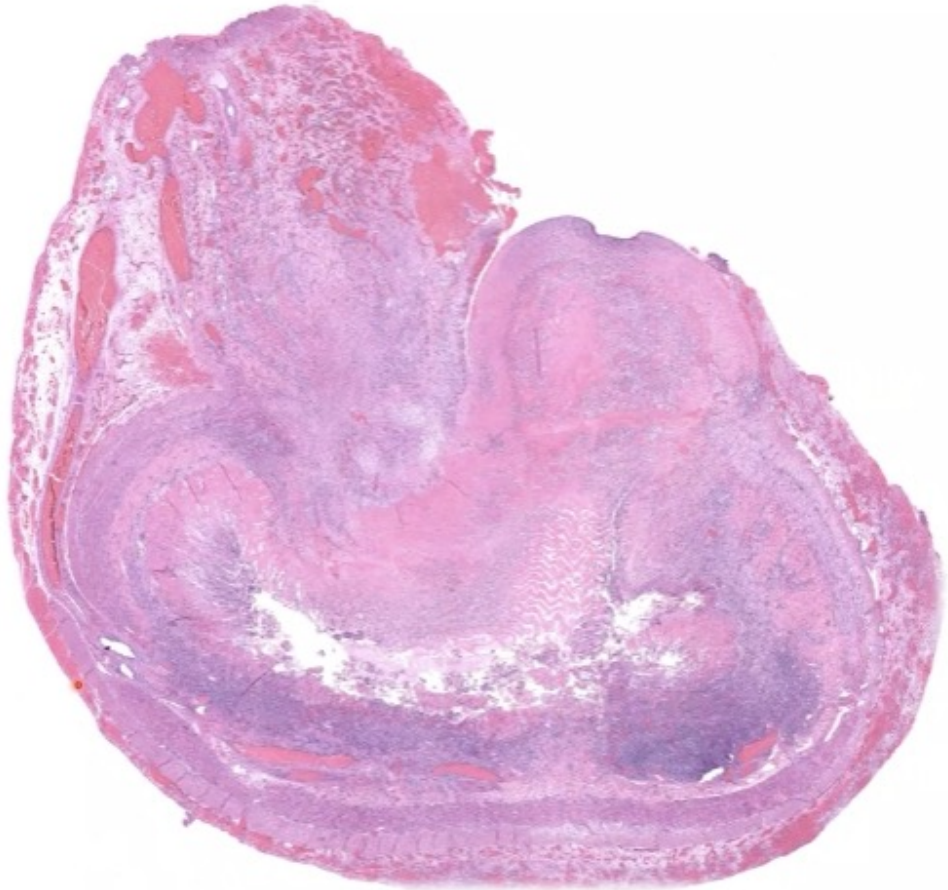


# PATHOLOGY





# PATHOLOGY





# PATHOLOGY

